



23105 Kashiwa Court, Torrance, CA 90505  
Phone: (800) 579-4875 or (310) 534-1505 Fax: (310) 534-1424  
E-mail: info@ledtronics.com  
Website: <http://www.ledtronics.com>

# LED16SM-06P28S-XPW-001W

LED Corn Lamp; P28s Base; Clear Lens  
100~277Vac; Pure White (6000K); 6W  
Angle of illumination: 360°



DWG BY:  
HF  
05-02-23

R&D:  
UF  
05-03-23

MFG:  
LUV  
05-03-23

QA:  
LUV  
05-03-23

REVISION LTR: PRELIMINARY  
  
05-02-23

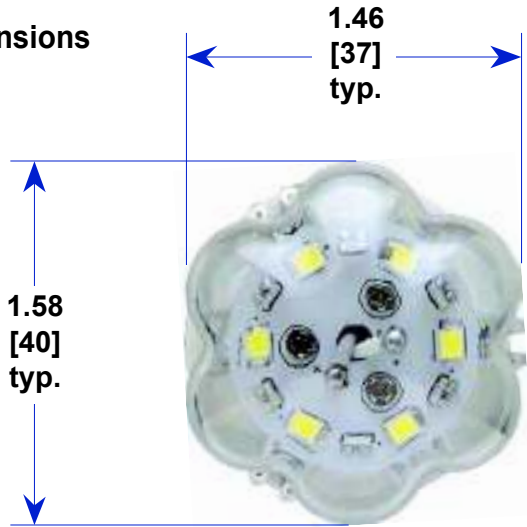
**○ Features**

Operating Temperature	-20°C to +65°C
Storage Temperature	-40°C to +80°C
Heatsink Temperature	65°C
Lens Material / Color	Polycarbonate / Clear
LED Quantity	42 pcs.
UL / cUL Listed	E474634 (CH-CORN-6W)
Dimmable	No
Lifespan	50,000 hrs.
Warranty	5 Years
Weight	0.21 lb. / 3.36 oz.

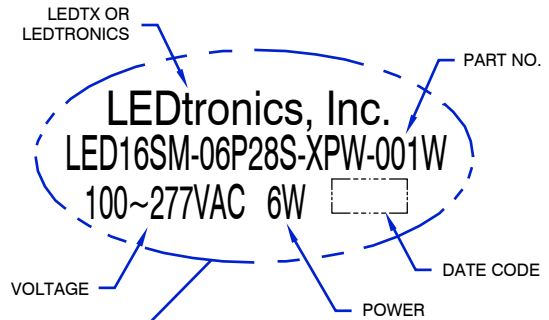

**○ Electro-Optical Characteristics**

<b>Part Number</b>	<b>LED16SM-06P28S-XPW-001W</b>
Input Voltage (typ)	100~277Vac
Tested @ (Voltage)	120Vac
Power Consumption	5.8 W
Current Consumption	0.049 A
Efficacy: (Lm/W)	118
Lumens	682 lm
Maximum Candela	85 cd
Power Factor	0.98
CCT	6000K
Color	Pure White
Angle of illumination	360°

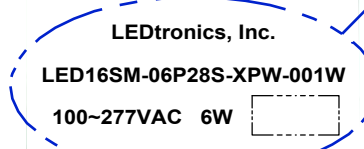
○ **Dimensions**



**TOP VIEW**

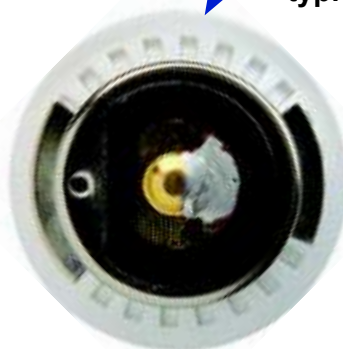


**SIDE VIEW**



Ø1.60  
[Ø41]  
typ.

P28s  
Base



**BOTTOM VIEW**

**Tolerance:**

XXX +/- .010

XX +/- .025

**Note:**

1. All Dimensions are in Inches [Millimeters].