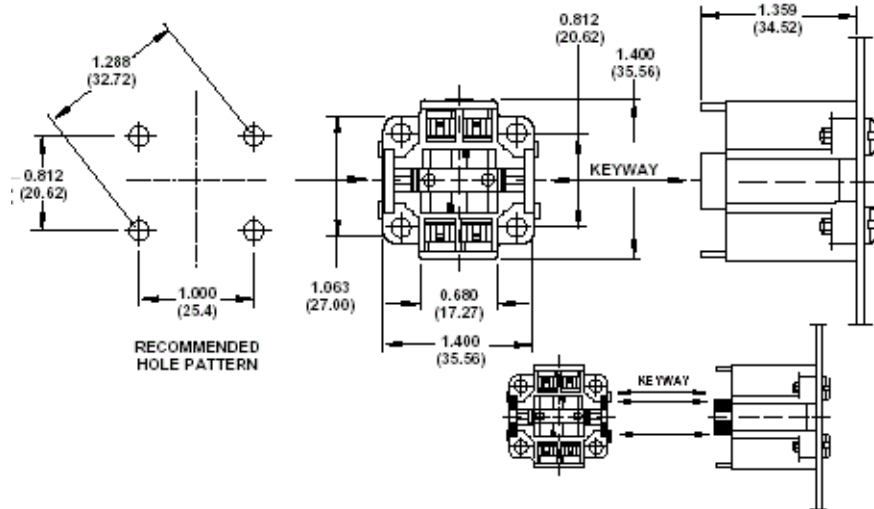


LH1030



G24q-3, GX24q-4 Base, 26W 32W 42W 4-Pin, 10mm Compact Fluorescent Lampholder, Vertical, Bottom Screw-Down, White Color Code, Universal Wattage Ballast Only, Quick-Connect 18AWG Solid or Str. Tinned - White Body

WATTAGE: 75W

VOLTAGE: 600V