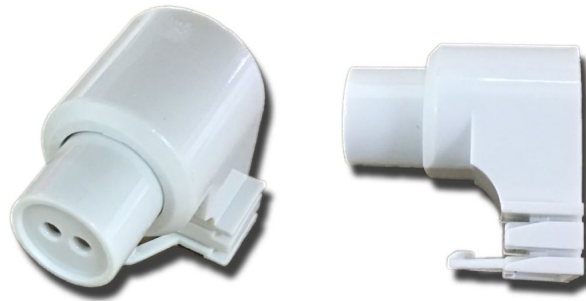


LH1117 (1-494H)



T5 to T8/T12 adapter, non-shunted

Country of Origin	China
Certifications / Approvals	cULus
Base Type	G5, G13
Material	Polycarbonate
Termination	Quickwire 18AWG
Mounting Type	Slide-On
Shunt Type	Non-Shunted
Dimensions(L/W/H)	1.5x1.2x1.2
Weight	0.032