

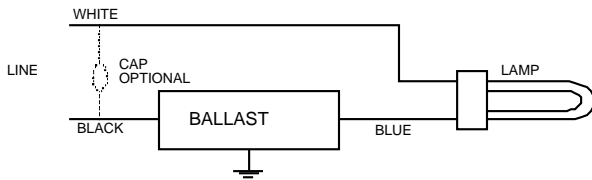


<b>LO-1Q28-TP</b>	
Brand Name	COMPACT-OPEN
Ballast Type	Magnetic
Starting Method	Pre-Heat
Lamp Connection	Series
Input Voltage	120
Input Frequency	60 HZ
Status	Active

### Electrical Specifications

Lamp Type	Num. of Lamps	Rated Lamp Watts	Min. Start Temp (°F/C)	Input Current (Amps)	Input Power (Watts)	Ballast Factor	MAX THD %	Power Factor	Lamp Current Crest Factor	B.E.F.
* CFQ27W/GX32D	1	27	50/10	0.59	32	0.97	10	0.45	1.5	3.05

### Wiring Diagram



Diag. 140

The wiring diagram that appears above is for the lamp type denoted by the asterisk (\*)

### Standard Lead Length (inches)

	in.	cm.		in.	cm.
Black	15	38.1	Yellow/Blue		0
White		0	Blue/White		0
Blue	15	38.1	Brown		0
Red		0	Orange		0
Yellow		0	Orange/Black		0
Gray	0		Black/White		0
Violet		0	Red/White		0

### Enclosure

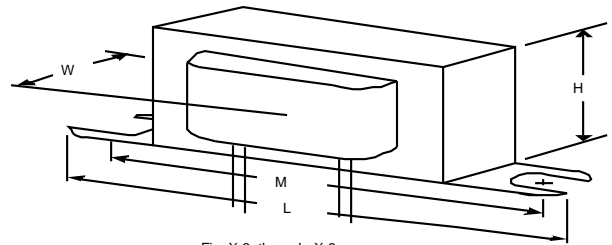


Fig. X-3 through X-8

### Enclosure Dimensions

OverAll (L)	Width (W)	Height (H)	Mounting (M)
4.0 "	1.5625 "	2.25 "	3.5 "
4	1 9/16	2 1/4	3 1/2
10.2 cm	4 cm	5.7 cm	8.9 cm

Revised 09/13/1999



Data is based upon tests performed by Advance Transformer in a controlled environment and representative of relative performance. Actual performance can vary depending on operating conditions. Specifications are subject to change without notice. All specifications are nominal unless otherwise noted.

### ADVANCE TRANSFORMER CO.

O'HARE INTERNATIONAL CENTER · 10275 WEST HIGGINS ROAD · ROSEMONT, IL 60018

Customer Support/Technical Service: Phone: 800-372-3331 · Fax: 630-307-3071

Corporate Offices: Phone: 800-322-2086