

HEH (Helios standard)

LTIX 3000W HEH

These drop-in replacement lamps consume the same electrical energy as standard lamps, yet significantly increase the light output on the screen. This means they can be used to upgrade projection performance without actually purchasing a new projector. Alternatively, these lamps allow use of a lower wattage lamp while maintaining the light output on screen, which means they can be used to reduce power consumption and lower the overall cost of ownership of a cinema projector. In addition, since they are 'drop-in' replacements, no lamp housing modifications and no lens changes are required. There is a choice of five power ratings in the Helios Standard Cinema Xenon lamps range: 2000W, 2500W, 3000W, 4200W, or 7000W.

Product data

• General Characteristics

Operating Position	hor/ver30 [Horizontal or vertical +/- 30 degrees]
Main Application	Cinema
Average Lifetime	1200 hr
Magnet	-

• Light Technical Characteristics

Luminous Flux Lamp	130000 Lm
--------------------	-----------

• Electrical Characteristics

Lamp Wattage	3000 W
Lamp Wattage Technical	3000 W
Lamp Voltage	29 V
Lamp Current	100 A
Ignition Peak Voltage	36000 (max) V
Lamp Current Span	60/110 A

• Product Dimensions

Reference Length A	167.5 mm
Insertion Length B	382 (max) mm

Overall Length C	428 (max) mm
Diameter D	52 mm
Cable Length X	280 mm
Anode base diameter	27 mm
Anode pin diameter	13 mm
Cathode pin diameter	14 mm
Arc Gap	6.0 mm

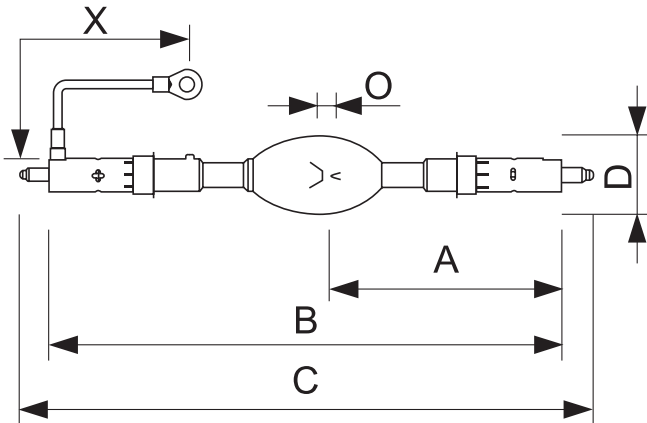
• Product Data

Order code	928412106201
Full product code	928412106201
Full product name	LTIX 3000W HEH
Order product name	LTIX 3000W HEH
Pieces per pack	1
Packing configuration	1
Packs per outerbox	1
Bar code on pack - EAN1	8727900301687
Bar code on outerbox - EAN3	8727900301687
Logistic code(s) - 12NC	928412106201
Net weight per piece	0.765 kg

PHILIPS

HEH (Helios standard)

Dimensional drawing



LTIX 3000W HEH

Product	A (Norm)	B (Max)	C (Max)	D (Norm)	O (Norm)	X (Norm)
LTIX 3000W HEH	167,5	382	428	52	6,0	280



© 2014 Koninklijke Philips N.V. (Royal Philips)
All rights reserved.

Specifications are subject to change without notice. Trademarks are the property of Koninklijke Philips N.V. (Royal Philips) or their respective owners.

www.philips.com/lighting

2014, April 11
data subject to change