



# MASTER LEDtube Mains T5

## MASTER LEDtube 1500mm HO 26W 840 T5

The new Philips Master LEDtube Mains T5 brings simplicity to your lighting project. You don't need to pay attention to the driver technology anymore. Thanks to a unique design, Philips MASTER LEDtube Mains T5 installs in luminaires operating on mains power connection. So simple to operate! Perfectly safe, reliable & easy to install Philips MASTER LEDtube Mains T5 is the ideal alternative to standard fluorescent tubes to maximize value over lifetime with high energy saving and lower maintenance costs.

### Product data

General Information	
Cap-Base	G5 [ G5]
EU RoHS compliant	Yes
Nominal Lifetime (Nom)	50000 h
Switching Cycle	200000X

Light Technical	
Color Code	840 [ CCT of 4000K]
Beam Angle (Nom)	200 °
Luminous Flux (Nom)	3900 lm
Color Designation	Cool White (CW)
Correlated Color Temperature (Nom)	4000 K
Luminous Efficacy (rated) (Nom)	150.00 lm/W
Color Consistency	<6
Color Rendering Index (Nom)	80
LLMF At End Of Nominal Lifetime (Nom)	70 %

Operating and Electrical	
Input Frequency	50 to 60 Hz
Power (Nom)	26 W
Lamp Current (Nom)	125 mA
Starting Time (Nom)	0.5 s
Warm Up Time to 60% Light (Nom)	0.5 s
Power Factor (Nom)	0.92
Voltage (Nom)	220-240 V

Temperature	
T-Ambient (Max)	45 °C
T-Ambient (Min)	-20 °C
T-Storage (Max)	65 °C
T-Storage (Min)	-40 °C
T-Case Maximum (Nom)	70 °C

# MASTER LEDtube Mains T5

## Controls and Dimming

Dimmable	No
----------	----

## Mechanical and Housing

Bulb Finish	Frosted
Bulb Material	Glass
Product Length	1500 mm
Bulb Shape	Tube, double-ended

## Approval and Application

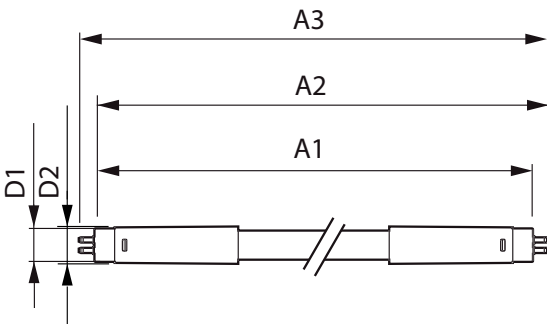
Energy Efficiency Label (EEL)	D
Energy Saving Product	Yes
Approval Marks	RoHS compliance CE marking KEMA Keur certificate

Energy Consumption kWh/1000 h	26 kWh
-------------------------------	--------

## Product Data

Full product code	871869681931900
Order product name	MASTER LEDtube 1500mm HO 26W 840 T5
EAN/UPC - Product	8718696819319
Order code	929001908902
Numerator - Quantity Per Pack	1
Numerator - Packs per outer box	10
Material Nr. (12NC)	929001908902
Net Weight (Piece)	0.285 kg

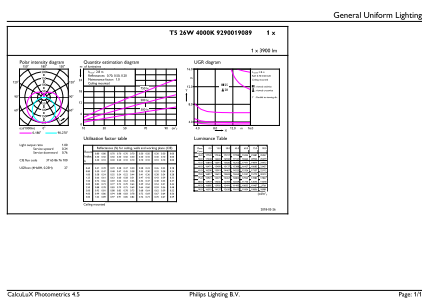
## Dimensional drawing



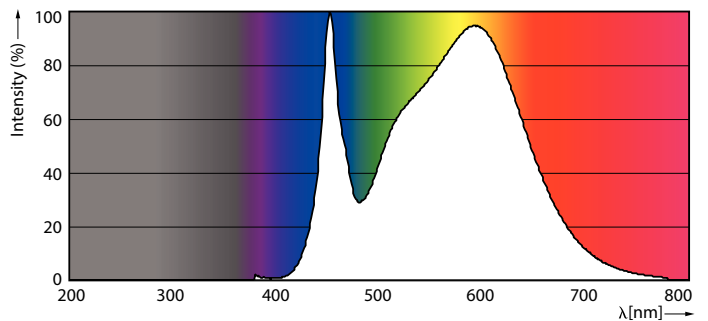
TLED 1500mm 26W-54W 3900lm 200D 4000K G5

Product	D1	D2	A1	A2	A3
MASTER LEDtube 1500mm HO 26W 840 T5	15 mm	16.9 mm	1449 mm	1456.1 mm	1463.2 mm

## Photometric data



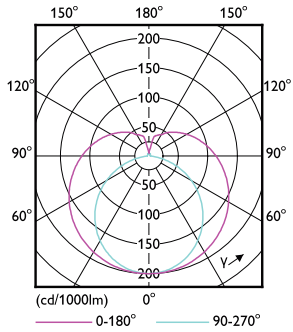
26W G5 840 4000K



26W G5

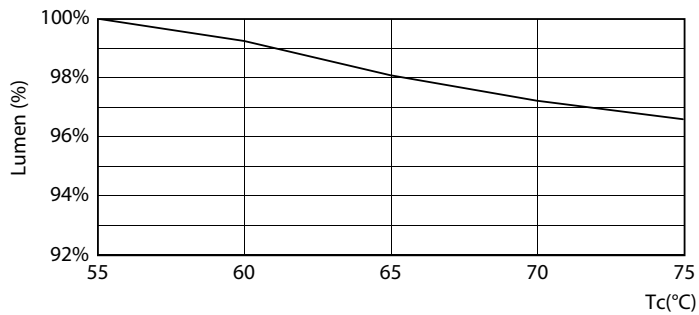
# MASTER LEDtube Mains T5

## Photometric data

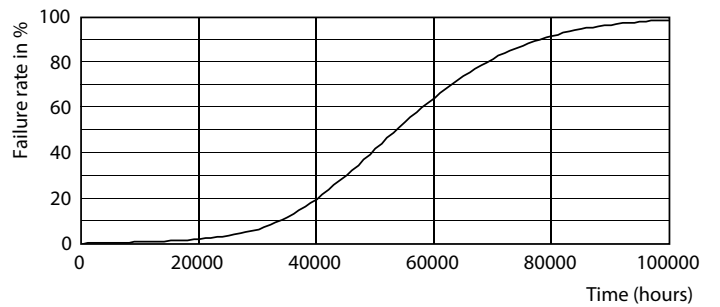


26W G5 830 3000K

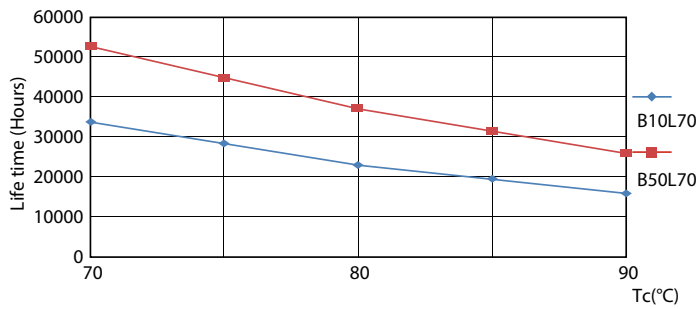
## Lifetime



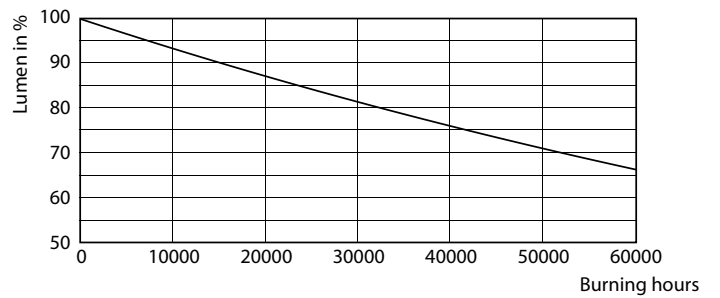
LEDtube MAS 1 26W 50K Lumen-VsTc-LMP



26W G5



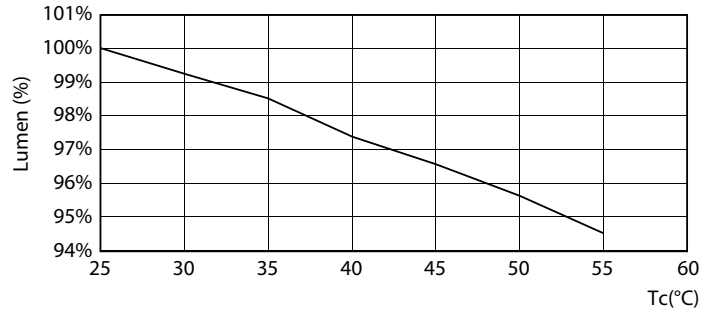
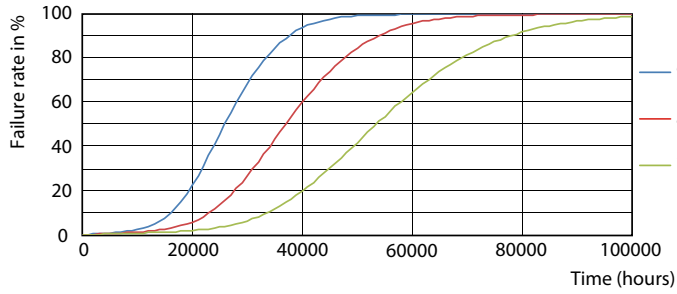
LEDtube MAS 1 26W 50K LifetimeVsTc-LED



26W G5

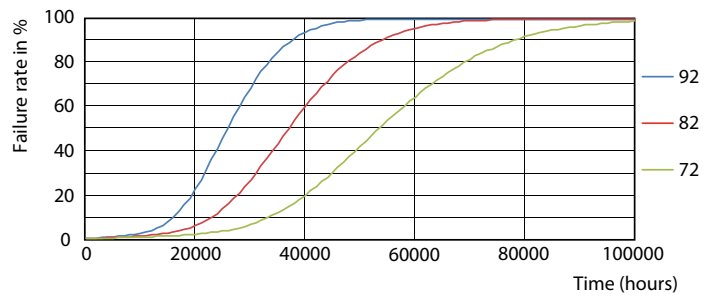
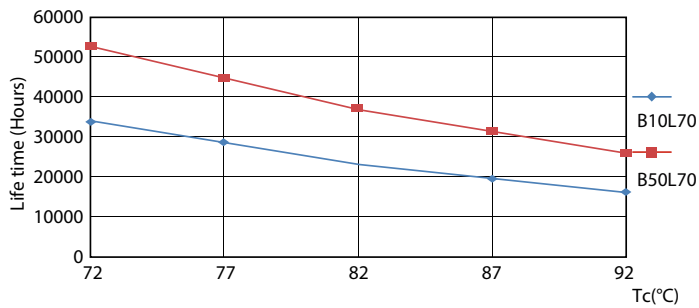
# MASTER LEDtube Mains T5

## Lifetime



LEDtube MAS 1 26W 50K FailureRate-LED

26W G5



26W G5

26W G5

