



MASTER LEDtube Mains T5

MAS LEDtube 1200mm HO 26W 865 T5

The new Philips Master LEDtube Mains T5 brings simplicity to your lighting project. You don't need to pay attention to the driver technology anymore. Thanks to a unique design, Philips MASTER LEDtube Mains T5 installs in luminaires operating on mains power connection. So simple to operate! Perfectly safe, reliable & easy to install Philips MASTER LEDtube Mains T5 is the ideal alternative to standard fluorescent tubes to maximize value over lifetime with high energy saving and lower maintenance costs.

Product data

General Information		Power (Rated) (Nom)	
Cap-Base	G5 [G5]		26 W
Nominal Lifetime (Nom)	50000 h	Lamp Current (Nom)	150 mA
Switching Cycle	200000X	Starting Time (Nom)	0.5 s
B50L70	50000 h	Warm Up Time to 60% Light (Nom)	0.5 s
		Power Factor (Nom)	0.9
		Voltage (Nom)	220-240 V
Light Technical		Temperature	
Color Code	865 [CCT of 6500K]	T-Ambient (Max)	45 °C
Beam Angle (Nom)	200 °	T-Ambient (Min)	-20 °C
Luminous Flux (Nom)	3900 lm	T-Storage (Max)	65 °C
Luminous Flux (Rated) (Nom)	3900 lm	T-Storage (Min)	-40 °C
Rated Beam Angle	200 °	T-Case Maximum (Nom)	72.1 °C
Correlated Color Temperature (Nom)	6500 K		
Color Consistency	<6	Controls and Dimming	
Color Rendering Index (Nom)	80	Dimmable	No
LLMF At End Of Nominal Lifetime (Nom)	70 %		
Operating and Electrical			
Input Frequency	50 to 60 Hz		

MASTER LEDtube Mains T5

Mechanical and Housing

Product Length 1200 mm

Approval and Application

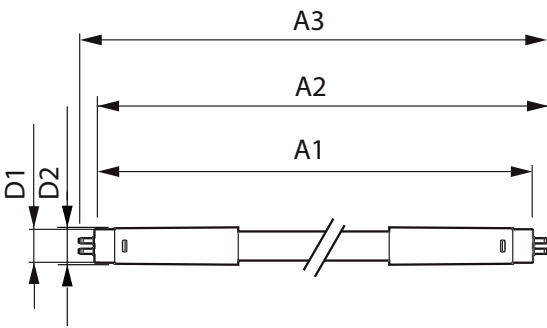
Energy Saving Product Yes
 Energy Efficiency Label (EEL) A++
 Approval Marks CE marking RoHS compliance KEMA Keur certificate
 Energy Consumption kWh/1000 h 26 kWh

Product Data

Full product code 871869681925800

Order product name	MAS LEDtube 1200mm HO 26W 865 T5
EAN/UPC - Product	8718696819258
Order code	929001908702
Numerator - Quantity Per Pack	1
Numerator - Packs per outer box	10
Material Nr. (12NC)	929001908702
Net Weight (Piece)	0.215 kg

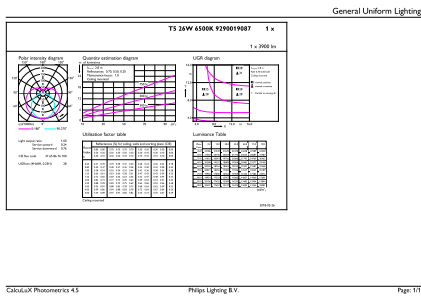
Dimensional drawing



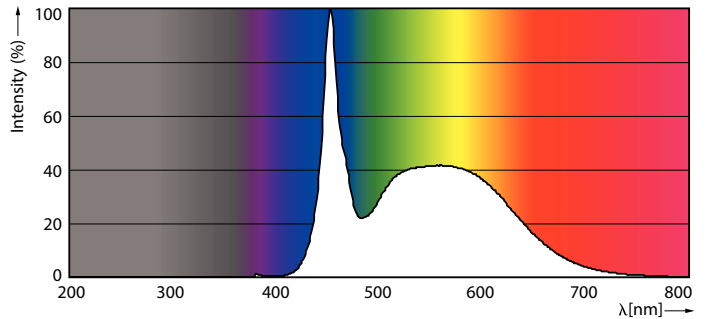
TLED 1200mm 26W-54W 3900lm 200D 6500K G5

Product	D1	D2	A1	A2	A3
MAS LEDtube 1200mm HO 26W 865 T5	15 mm	16.9 mm	1149 mm	1156.1 mm	1163.2 mm

Photometric data



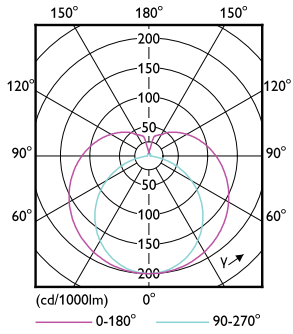
26W G5 865 6500K



26W G5

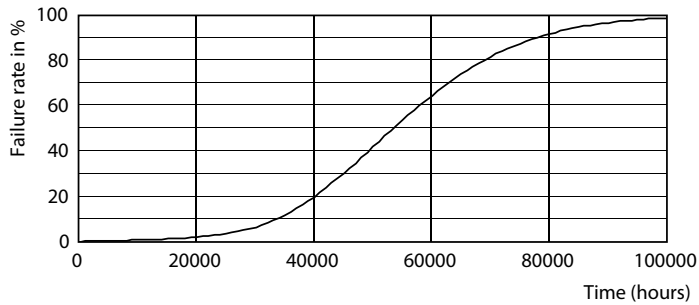
MASTER LEDtube Mains T5

Photometric data

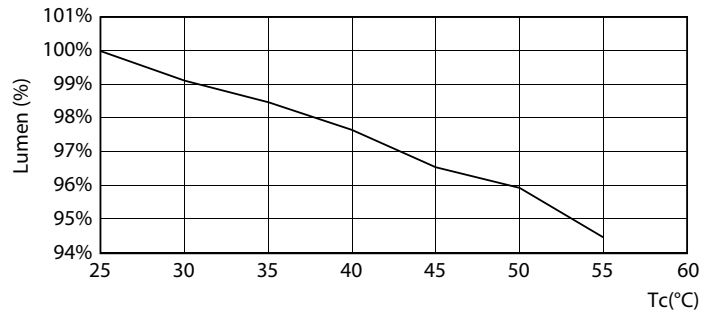


26W G5 830 3000K

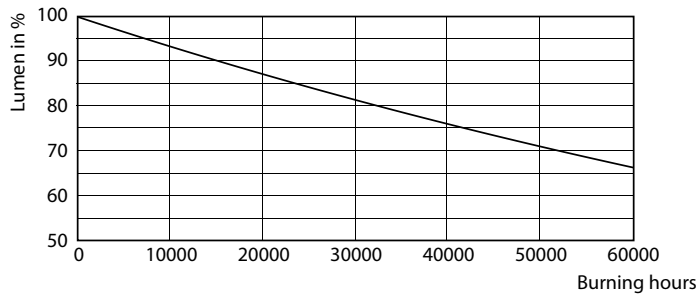
Lifetime



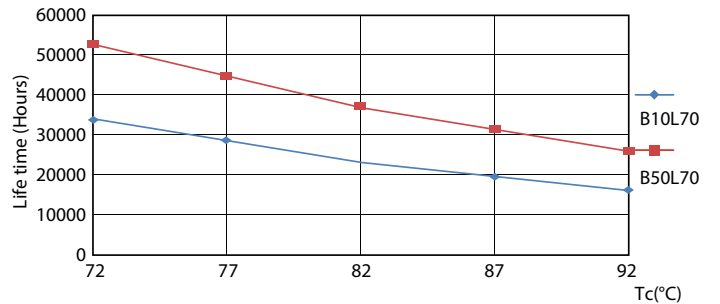
26W G5



26W G5



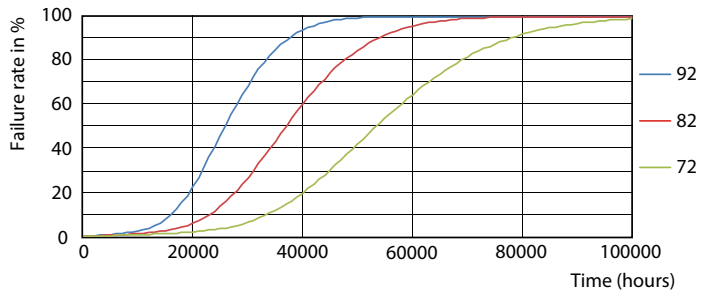
26W G5



26W G5

MASTER LEDtube Mains T5

Lifetime



26W G5

