



MASTER Value LED tube EM/Mains T8

MAS LEDtube 600mm HO 7.6W840 T8

MASTER Value, LEDtube, T8, EM/Mains, 600 mm, 7.6 W, 18W TL-D, 4000 K, 1150 lm, CRI 80, 100000 hour(s)

A high-performance LED solution, the professional MASTER Value LED tube is ideal for replacing T8 fluorescent lamps using EM ballast or installing directly on the mains. This product provides an optimal combination of value and performance – for use in all general lighting, office, industry, retail, and hospitality applications. The unique design of this LED T8 tube light offers wide compatibility, safety and fast installation, as well as instant energy savings.

Product data

General Information	
Cap-Base	G13 Rotatable end-cap
Nominal lifetime	100,000 hour(s)
Switching Cycle	200,000
Lighting Technology	LEDtube
Flux measurement reference	Sphere
Warranty period	5 years

Light Technical	
Color Code	840 [CCT of 4000K]
Beam Angle (Nom)	160 degree(s)
Luminous Flux	1,150 lm
Color Designation	Cool White (CW)
Correlated Color Temperature (Nom)	4000 K
Luminous Efficacy (rated) (Nom)	151 lm/W

Color Consistency	<6
Color rendering index (CRI)	80
LLMF At End Of Nominal Lifetime (Nom)	70 %
Photobiological safety according to EN 62471	RG0

Sustainability Data	
Product non-virgin material ratio	40.9 %

Operating and Electrical	
Input Frequency	50 to 60 Hz
Power Consumption	7.6 W
Lamp Current (Max)	40 mA
Lamp Current (Min)	30 mA
Starting Time (Nom)	0.5 s
Warm-up time to 60% light	0.5 s

MASTER Value LED tube EM/Mains T8

Power Factor (Fraction)	0.9
Voltage (Nom)	220-240 V
LED alternative to fluorescent lamp power	18W TL-D
Inrush current at mains	7
Max. lamp no. on MCB B type 10A – Mains	105
Max. lamp no. on MCB B type 10A – EM ballast without Compensation Capacitor.	125
Max. lamp no. on MCB B type 10A – EM ballast with Compensation Capacitor.	30
Max. lamp no. on MCB B type 16A – Mains	170
Max. lamp no. on MCB B type 16A – EM ballast without Compensation Capacitor.	290
Max. lamp no. on MCB B type 16A – EM ballast with Compensation Capacitor.	49
Ballast Compatibility	EM/Mains

Temperature

T-Case Maximum (Nom)	50 °C
----------------------	-------

Controls and Dimming

Dimmable	No
----------	----

Mechanical and Housing

Bulb Finish	Frosted
Bulb Material	Plastic
Product Length	600 mm
Bulb Shape	T8
Net Weight (Piece)	0.095 kg

Approval and Application

Energy Efficiency Class	D
-------------------------	---

Energy Saving Product	Yes
Approval Marks	RoHS compliance CE marking KEMA Keur certificate ENEC certificate
Energy Consumption kWh/1000 h	8 kWh
EPREL Registration Number	2144206
CE mark	Yes
EU RoHS compliant	Yes
Flickering value (PstLM) - Flickering value as per EN 61000-3-3	0.1
Stroboscopic effect visibility measure (SVM)	0.1
Ambient temperature range	-20 to +45 °C
Post-consumer recycled plastic material ratio	40 %

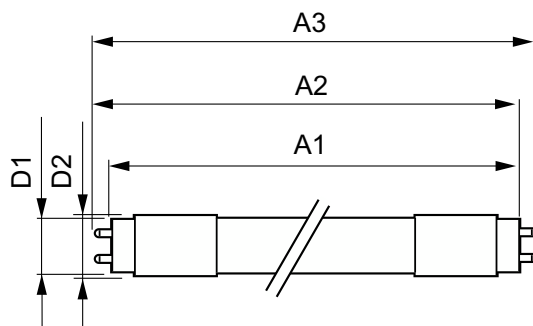
Application Conditions

can it be used in closed luminaires	Yes
-------------------------------------	-----

Product Data

Order product name	MAS LEDtube 600mm HO 7.6W840 T8
Full product name	MAS LEDtube 600mm HO 7.6W840 T8
Full product code	872110304417400
Order code	929004260302
Material Nr. (12NC)	929004260302
Numerator - Quantity Per Pack	1
EAN/UPC - Product/Case	8721103044174
Numerator - Packs per outer box	10
EAN/UPC - Case	8721103044181

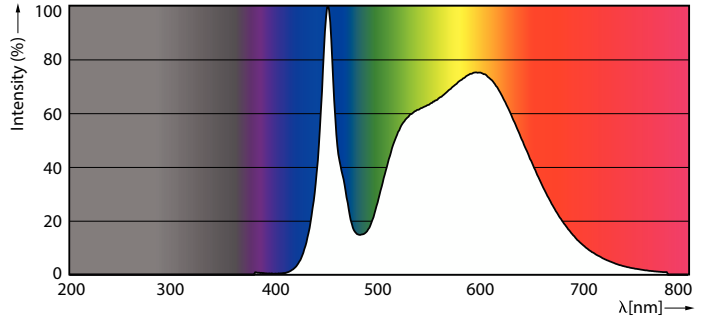
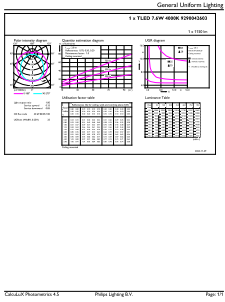
Dimensional drawing



Product	D1	D2	A1	A2	A3
MAS LEDtube 600mm HO 7.6W840 T8	25.8 mm	28 mm	588.5 mm	595.5 mm	602.5 mm

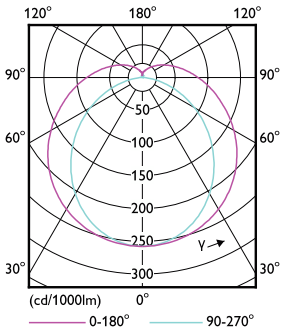
MASTER Value LED tube EM/Mains T8

Photometric data



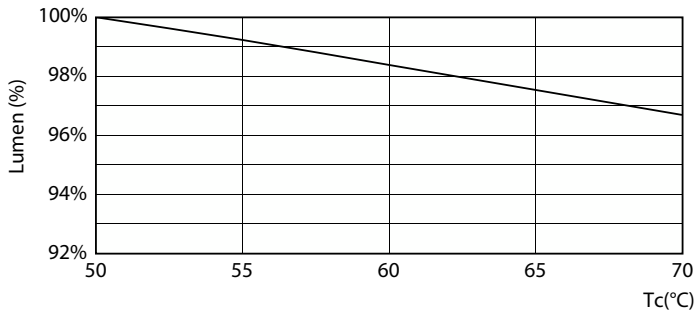
General uniform lighting - MAS LEDtube 600mm HO 7.6W840 T8

Spectral Power Distribution Colour - MAS LEDtube 600mm HO 7.6W840 T8

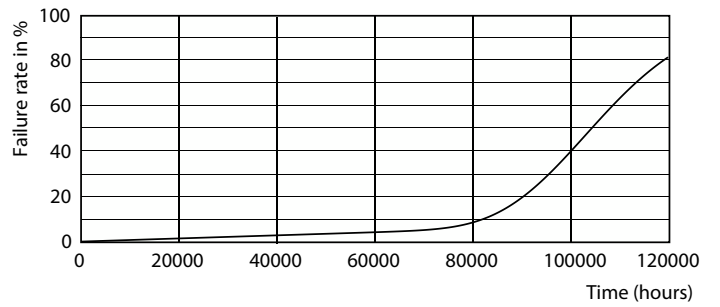


Light Distribution Diagram - MAS LEDtube 600mm HO 7.6W840 T8

Lifetime



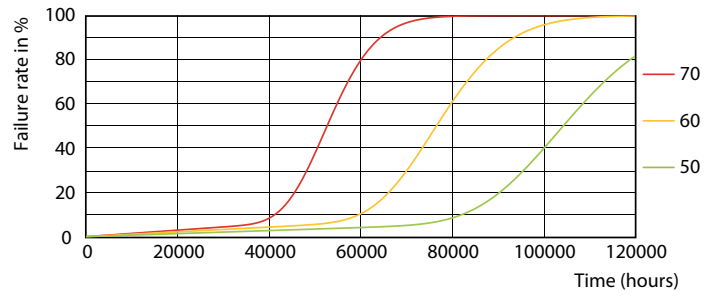
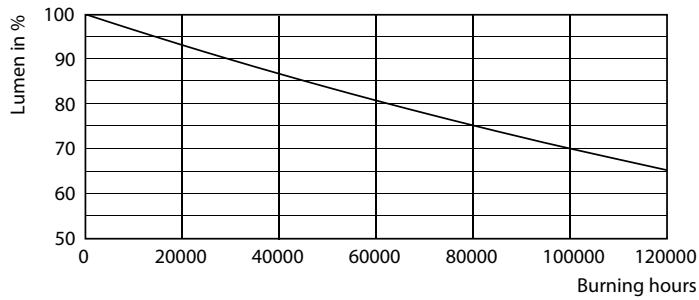
Lumen Maintenance Diagram - MAS LEDtube 600mm HO 7.6W840 T8



Life Expectancy Diagram

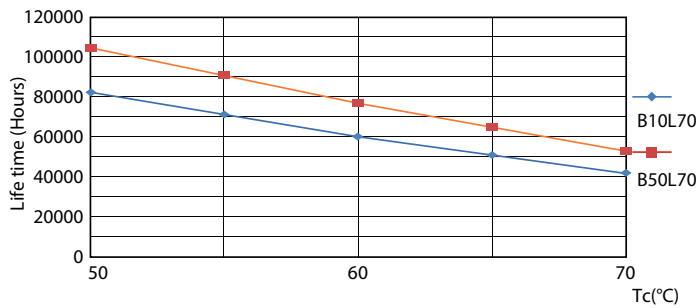
MASTER Value LED tube EM/Mains T8

Lifetime



Lumen Maintenance Diagram - MAS LEDtube 600mm HO 7.6W840 T8

Life Expectancy Diagram



Life Expectancy Diagram

