



MASTER LEDtube InstantFit HF T8



MAS LEDtube HF 1200mm HO 14W840 T8

Philips MASTER LEDtube InstantFit T8 integrates a LED light source into a traditional fluorescent form factor. Its unique design creates a perfectly uniform visual appearance which cannot be distinguished from traditional fluorescent. Philips MASTER LEDtube InstantFit T8 is the ideal solution for customers who have higher light requirements and want to maximize value over lifetime. Full energy savings & longer lifetime result in attractive payback times and TCO benefits.

Warnings and Safety

- NOTES: The overall energy efficiency and light distribution of any installation that uses these lamps are determined by the design of the installation.

Product data

General Information	
Cap-Base	G13 ROT (Rotating) [Medium Bi-Pin Fluorescent]
Nominal lifetime	75,000 hour(s)
Switching Cycle	50,000
Lighting Technology	LED
Flux measurement reference	Sphere
CE mark	Yes
EU RoHS compliant	Yes

Light Technical	
Color Code	840 [CCT of 4000K]
Beam Angle (Nom)	160 degree(s)
Luminous Flux	2,100 lumen
Color Designation	Cool White (CW)

Correlated Color Temperature (Nom)	4000 K
Luminous Efficacy (rated) (Nom)	150 lm/W
Color Consistency	<6
Color rendering index (CRI)	80
LLMF At End Of Nominal Lifetime (Nom)	70 %
Flickering value (PstLM)	0.5
Stroboscopic effect value (SVM)	0.2
Photobiological safety according to EN 62471	RGO

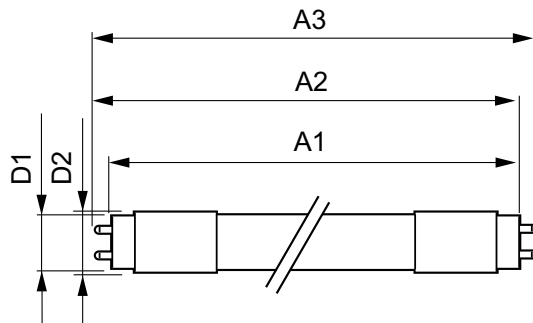
Operating and Electrical	
Line Frequency	20000-75000 Hz
Input Frequency	20000-75000 Hz
Power Consumption	14 W
Starting Time (Nom)	0.5 s
Warm-up time to 60% light	0.5 s

MASTER LEDtube InstantFit HF T8

Power Factor (Fraction)	0.9
Voltage (Nom)	30-80 V
LED alternative to fluorescent lamp power	36 W
Temperature	
Ambient temperature range	-20 °C to 45 °C
T-Case Maximum (Nom)	55 °C
Controls and Dimming	
Dimmable	Yes - Check ballast compatibility
Mechanical and Housing	
Bulb Finish	Frosted
Bulb Material	Plastic
Product Length	1,200 mm
Bulb Shape	Tube, double-ended
Approval and Application	
Energy Efficiency Class	D
Energy Saving Product	Yes

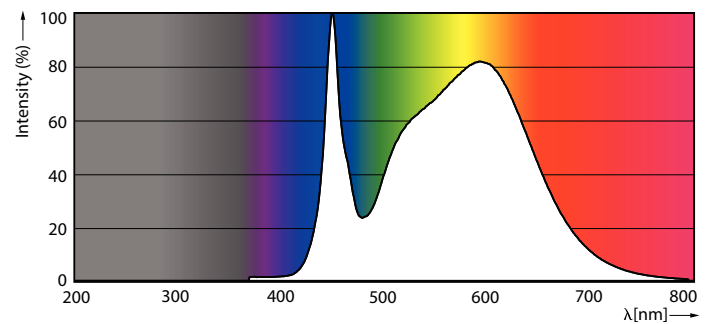
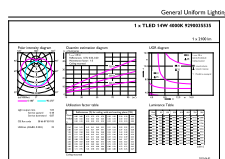
Approval Marks	RoHS compliance TUV CE marking KEMA Keur certificate
Energy Consumption kWh/1000 h	14 kWh
EPREL Registration Number	1165509
Product Data	
Full product code	871951446684500
Order product name	MAS LEDtube HF 1200mm HO 14W840 T8
Order code	929003553502
Numerator - Quantity Per Pack	1
Numerator - Packs per outer box	20
Material Nr. (12NC)	929003553502
Full product name	MAS LEDtube HF 1200mm HO 14W840 T8
EAN/UPC - Case	8719514466852
EAN/UPC - Product/Case	8719514466845

Dimensional drawing



Product	D1	D2	A1	A2	A3
MAS LEDtube HF 1200mm HO 14W840 T8	25.8 mm	28 mm	1,198.2 mm	1,205.3 mm	1,212.4 mm

Photometric data

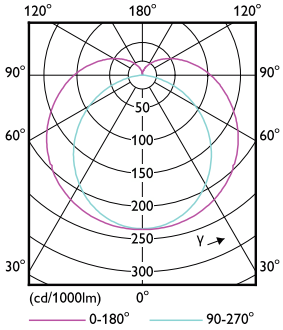


General uniform lighting - MAS LEDtube HF 1200mm HO 14W840 T8

Spectral Power Distribution Colour - MAS LEDtube HF 1200mm HO 14W840 T8

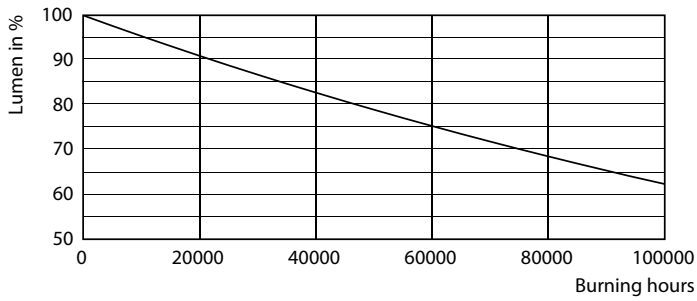
MASTER LEDtube InstantFit HF T8

Photometric data

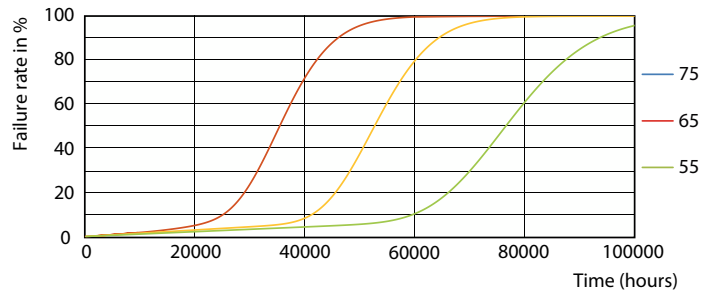


Light Distribution Diagram - MAS LEDtube HF 1200mm HO 14W840 T8

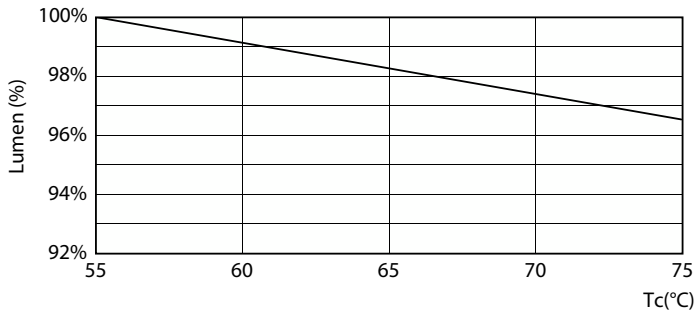
Lifetime



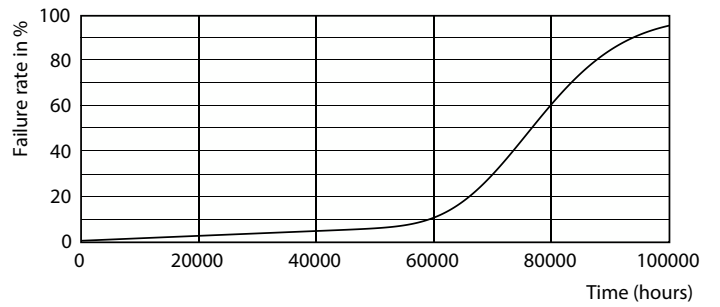
Lumen Maintenance Diagram - MAS LEDtube HF 1200mm HO 14W840 T8



Life Expectancy Diagram - MAS LEDtube HF 1200mm HO 14W840 T8



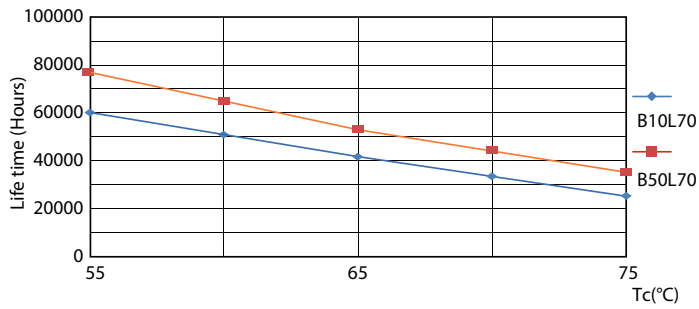
Lumen Maintenance Diagram - MAS LEDtube HF 1200mm HO 14W840 T8



Life Expectancy Diagram - MAS LEDtube HF 1200mm HO 14W840 T8

MASTER LEDtube InstantFit HF T8

Lifetime



Life Expectancy Diagram - MAS LEDtube HF 1200mm HO 14W840 T8

