



# MASTER LEDtube InstantFit HF T8



## MAS LEDtube HF 1200mm UO 16W840 T8

Philips MASTER LEDtube InstantFit T8 integrates a LED light source into a traditional fluorescent form factor. Its unique design creates a perfectly uniform visual appearance which cannot be distinguished from traditional fluorescent. Philips MASTER LEDtube InstantFit T8 is the ideal solution for customers who have higher light requirements and want to maximize value over lifetime. Full energy savings & longer lifetime result in attractive payback times and TCO benefits.

### Warnings and Safety

- NOTES: The overall energy efficiency and light distribution of any installation that uses these lamps are determined by the design of the installation.

### Product data

General Information		Color rendering index (CRI)	
Cap-Base	G13 ROT		80
Nominal lifetime	75,000 hour(s)	LLMF At End Of Nominal Lifetime (Nom)	70 %
Switching Cycle	50,000	Flickering value (PstLM) - Flickering value as per EN 61000-3-3	0.5
Lighting Technology	LED	Stroboscopic effect visibility measure (SVM)	0.2
Flux measurement reference	Sphere	Photobiological safety according to EN 62471	RG0
Light Technical		Operating and Electrical	
Color Code	840 [CCT of 4000K]	Line Frequency	20000-75000 Hz
Beam Angle (Nom)	160 degree(s)	Input Frequency	20000-75000 Hz
Luminous Flux	2,500 lm	Power Consumption	16 W
Luminous Efficacy (rated) (Nom)	156 lm/W	Lamp Current (Max)	750 mA
Color Designation	Cool White (CW)	Lamp Current (Min)	300 mA
Correlated Color Temperature (Nom)	4000 K	Starting Time (Nom)	0.5 s
Color Consistency	<6	Warm-up time to 60% light	0.5 s

# MASTER LEDtube InstantFit HF T8

Power Factor (Fraction)	0.9
Voltage (Nom)	30-80 V
LED alternative to fluorescent lamp power	36 W
Inrush current at mains	-
Max. lamp no. on MCB B type 10A – Mains	-
Max. lamp no. on MCB B type 10A – EM ballast without Compensation Capacitor.	-
Max. lamp no. on MCB B type 10A – EM ballast with Compensation Capacitor.	-
Max. lamp no. on MCB B type 16A – Mains	-
Max. lamp no. on MCB B type 16A – EM ballast without Compensation Capacitor.	-
Max. lamp no. on MCB B type 16A – EM ballast with Compensation Capacitor.	-
Ballast Compatibility	HF

## Temperature

Ambient temperature range	-20 °C to 45 °C
T-Case Maximum (Nom)	55 °C

## Controls and Dimming

Dimmable	Yes - Check ballast compatibility
----------	-----------------------------------

## Mechanical and Housing

Bulb Finish	Frosted
Bulb Material	Plastic
Product Length	1,200 mm

Bulb Shape	T8
------------	----

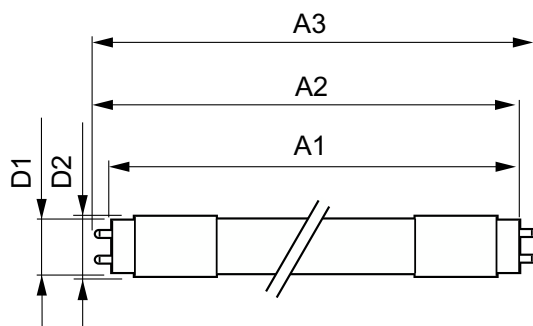
## Approval and Application

Energy Efficiency Class	D
Energy Saving Product	Yes
Approval Marks	RoHS compliance CE marking KEMA Keur certificate ENEC certificate
Energy Consumption kWh/1000 h	16 kWh
EPREL Registration Number	1165514
CE mark	Yes
EU RoHS compliant	Yes

## Product Data

Order product name	MAS LEDtube HF 1200mm UO 16W840 T8
Full product name	MAS LEDtube HF 1200mm UO 16W840 T8
Full product code	871951446696800
Order code	929003554102
Material Nr. (12NC)	929003554102
Numerator - Quantity Per Pack	1
Net Weight (Piece)	0.230 kg
EAN/UPC - Product/Case	8719514466968
Numerator - Packs per outer box	20
EAN/UPC - Case	8719514466975

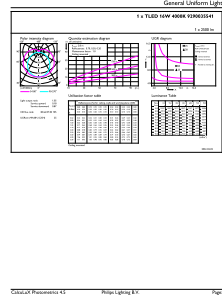
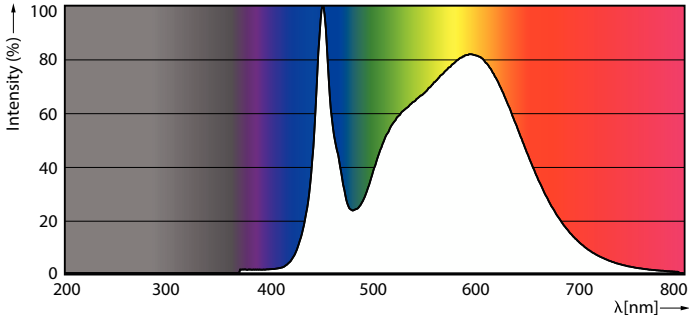
## Dimensional drawing



Product	D1	D2	A1	A2	A3
MAS LEDtube HF 1200mm UO 16W840 T8	25.8 mm	28 mm	1,198.2 mm	1,205.3 mm	1,212.4 mm

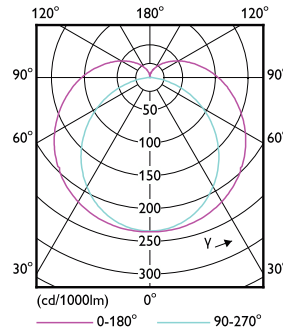
# MASTER LEDtube InstantFit HF T8

## Photometric data



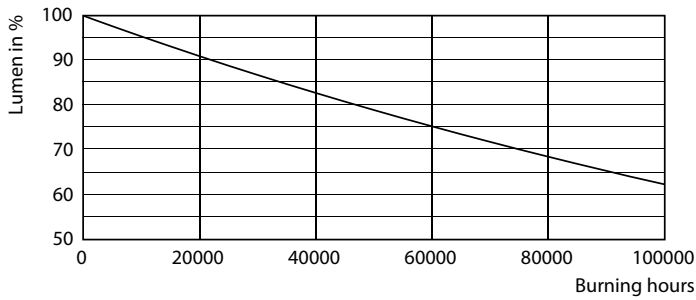
Spectral Power Distribution Colour - MAS LEDtube HF 1200mm UO 16W840 T8

General uniform lighting - MAS LEDtube HF 1200mm UO 16W840 T8

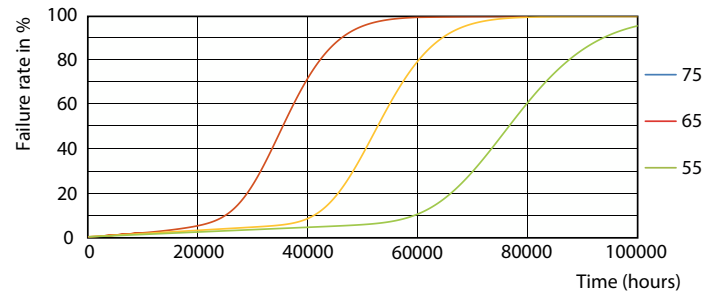


Light Distribution Diagram - MAS LEDtube HF 1200mm UO 16W840 T8

## Lifetime



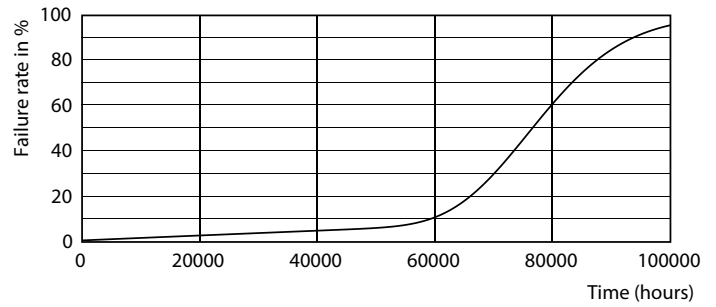
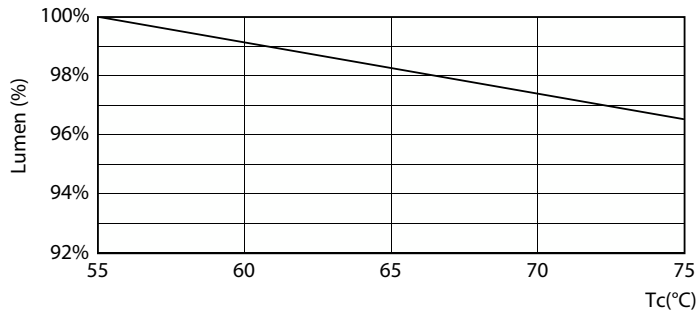
Lumen Maintenance Diagram - MAS LEDtube HF 1200mm UO 16W840 T8



FailureRate

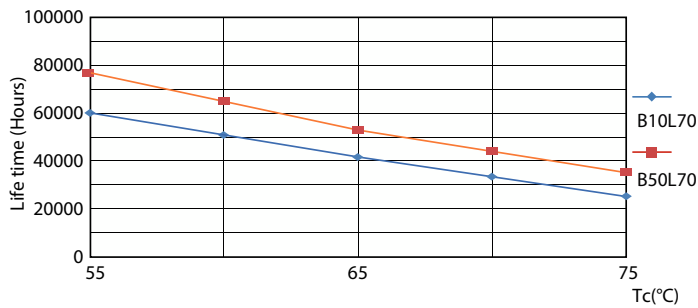
# MASTER LEDtube InstantFit HF T8

## Lifetime



Lumen Maintenance Diagram - MAS LEDtube HF 1200mm UO 16W840 T8

Life Expectancy Diagram



LifetimeVsTc

