



MASTER LEDtube InstantFit HF T5



MAS LEDtube HF 600mm HE 8W 840 T5

The Philips MASTER LEDtube integrates a LED light source into a traditional fluorescent form factor. Its unique design creates a perfectly uniform visual appearance, which cannot be distinguished from traditional fluorescent. These T5 lighting tubes are the right choice for absolute performance and are designed to stand up to everyday conditions. Unparalleled savings thanks to low energy consumption and an exceptionally long lifetime make these T5 LED tubes the choice for every demanding application.

Product data

General Information		Photobiological safety according to EN 62471	
Cap-Base	G5	RG0	
Nominal lifetime	60,000 hour(s)	Operating and Electrical	
Switching Cycle	50,000	Line Frequency	30K to 100K Hz
Lighting Technology	LED	Input Frequency	30K to 100K Hz
Flux measurement reference	Sphere	Power Consumption	8 W
Light Technical		Lamp Current (Max)	350 mA
Color Code	840 [CCT of 4000K]	Lamp Current (Min)	150 mA
Beam Angle (Nom)	200 degree(s)	Starting Time (Nom)	0.5 s
Luminous Flux	1,050 lm	Warm-up time to 60% light	0.5 s
Luminous Efficacy (rated) (Nom)	131 lm/W	Power Factor (Fraction)	0.92
Color Designation	Cool White (CW)	Voltage (Nom)	40-70 V
Correlated Color Temperature (Nom)	4000 K	LED alternative to fluorescent lamp power	14 W
Color Consistency	<6	Inrush current at mains	-
Color rendering index (CRI)	80	Max. lamp no. on MCB B type 10A - Mains	-
LLMF At End Of Nominal Lifetime (Nom)	70 %	Max. lamp no. on MCB B type 10A – EM ballast without Compensation Capacitor.	-

MASTER LEDtube InstantFit HF T5

Max. lamp no. on MCB B type 10A – EM ballast with Compensation Capacitor.	-
Max. lamp no. on MCB B type 16A – Mains	-
Max. lamp no. on MCB B type 16A – EM ballast without Compensation Capacitor.	-
Max. lamp no. on MCB B type 16A – EM ballast with Compensation Capacitor.	-
Ballast Compatibility	HF

Temperature

Ambient temperature range	-20 °C to 45 °C
T-Case Maximum (Nom)	65 °C

Controls and Dimming

Dimmable	Yes - Check ballast compatibility
----------	-----------------------------------

Mechanical and Housing

Bulb Finish	Frosted
Bulb Material	Glass
Product Length	600 mm
Bulb Shape	T5

Approval and Application

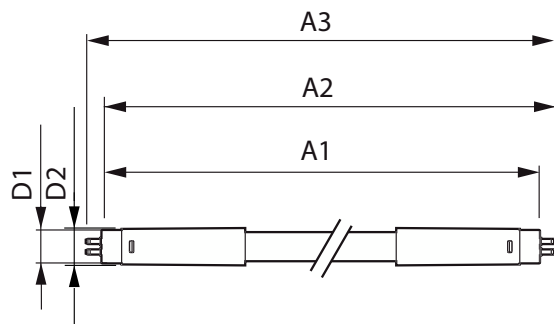
Energy Efficiency Class	E
-------------------------	---

Energy Saving Product	Yes
Approval Marks	RoHS compliance KEMA Keur certificate
Energy Consumption kWh/1000 h	8 kWh
EPREL Registration Number	1384132
CE mark	Yes
EU RoHS compliant	Yes

Product Data

Order product name	MAS LEDtube HF 600mm HE 8W 840 T5
Full product name	MAS LEDtube HF 600mm HE 8W 840 T5
Full product code	871869674325600
Order code	929001390802
Material Nr. (12NC)	929001390802
Numerator - Quantity Per Pack	1
Net Weight (Piece)	0.080 kg
EAN/UPC - Product/Case	8718696743256
Numerator - Packs per outer box	10
EAN/UPC - Case	8718696743263

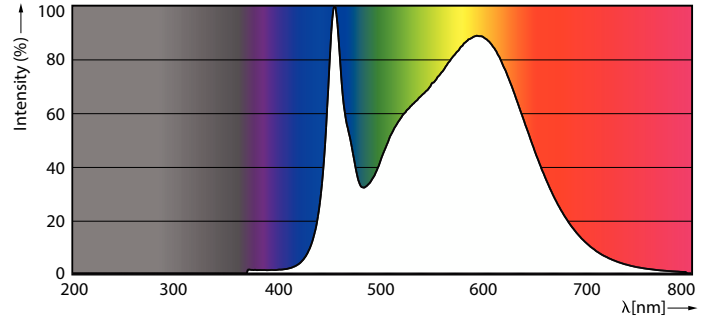
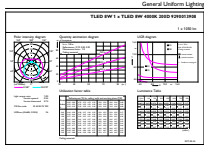
Dimensional drawing



Product	D1	D2	A1	A2	A3
MAS LEDtube HF 600mm HE 8W 840 T5	15.5 mm	18.8 mm	549 mm	556.1 mm	563.2 mm

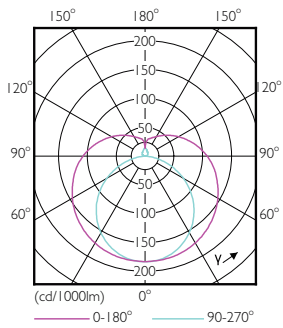
MASTER LEDtube InstantFit HF T5

Photometric data



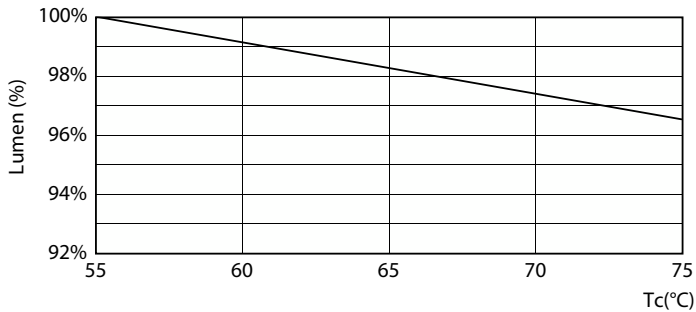
General uniform lighting - MAS LEDtube HF 600mm HE 8W 840 T5

Spectral Power Distribution Colour - MAS LEDtube HF 600mm HE 8W 840 T5

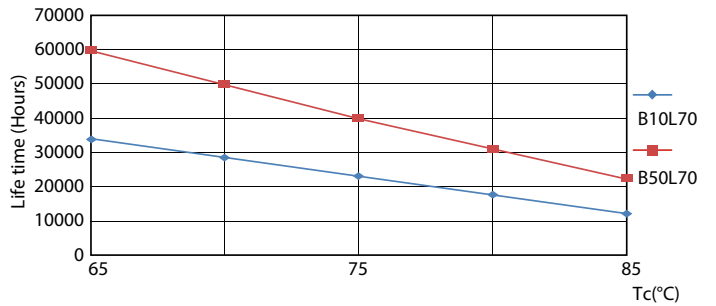


Light Distribution Diagram - MAS LEDtube HF 600mm HE 8W 840 T5

Lifetime



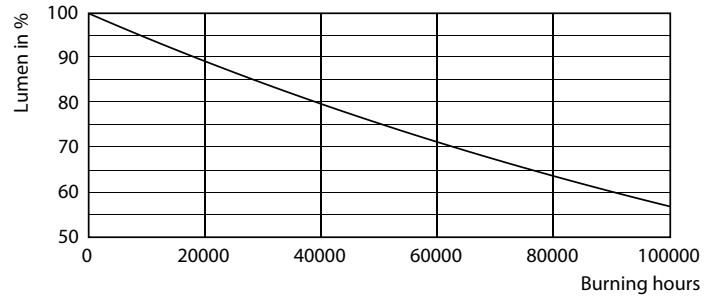
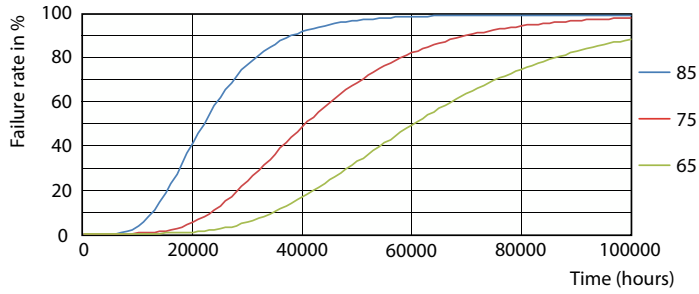
Lumen Maintenance Diagram - MAS LEDtube HF 600mm HE 8W 840 T5



LifetimeVsTc

MASTER LEDtube InstantFit HF T5

Lifetime



FailureRate

Lumen Maintenance Diagram - MAS LEDtube HF 600mm HE 8W 840 T5



Life Expectancy Diagram

