



# MASTER LEDtube T8 Ultra Efficient



## MAS LEDtube 1200mm UE 11.9W 840 T8 EELA

With energy prices rising and the EU's Green Deal<sup>2</sup> continuing to fund energy efficient building renovations, many are looking into make their company's lighting more sustainable. The new Philips MASTER LEDtube Ultra Efficient T8 is a true breakthrough on the way to more sustainable lighting. It replaces your current fluorescent tube or LED tube directly and offers immediately great energy cost reduction as well as a much longer lifetime!

### Product data

General Information	
Cap-Base	G13 ROT (Rotating) [Medium Bi-Pin Fluorescent]
Nominal lifetime	100,000 hour(s)
Switching Cycle	200,000
Lighting Technology	LED
Flux measurement reference	Sphere
CE mark	Yes
EU RoHS compliant	Yes

Light Technical	
Color Code	840 [CCT of 4000K]
Beam Angle (Nom)	160 degree(s)
Luminous Flux	2,500 lm
Color Designation	Cool White (CW)
Correlated Color Temperature (Nom)	4000 K
Luminous Efficacy (rated) (Nom)	210 lm/W
Color Consistency	<6
Color rendering index (CRI)	80

LLMF At End Of Nominal Lifetime (Nom)	70 %
Flickering value (PstLM)	1
Stroboscopic effect value (SVM)	0.4
Photobiological safety according to EN 62471	RG0

Operating and Electrical	
Line Frequency	50 to 60 Hz
Input Frequency	50 to 60 Hz
Power Consumption	11.9 W
Lamp Current (Max)	63 mA
Lamp Current (Min)	48 mA
Starting Time (Nom)	1 s
Warm-up time to 60% light	1 s
Power Factor (Fraction)	0.9
Voltage (Nom)	220-240 V
LED alternative to fluorescent lamp power	36 W
Max. lamp no. on MCB B type 10A - Mains	120
Max. lamp no. on MCB B type 10A - EM ballast without Comp. Cap.	120

# MASTER LEDtube T8 Ultra Efficient

Max. lamp no. on MCB B type 10A – EM ballast with Comp. Cap.	15
Max. lamp no. on MCB B type 16A – Mains	190
Max. lamp no. on MCB B type 16A – EM ballast without Comp. Cap.	190
Max. lamp no. on MCB B type 16A – EM ballast with Comp. Cap.	25

## Temperature

Ambient temperature range	-20 °C to 45 °C
T-Case Maximum (Nom)	40 °C

## Controls and Dimming

Dimmable	No
----------	----

## Mechanical and Housing

Bulb Finish	Frosted
Bulb Material	Plastic
Product Length	1,200 mm
Bulb Shape	T8

## Approval and Application

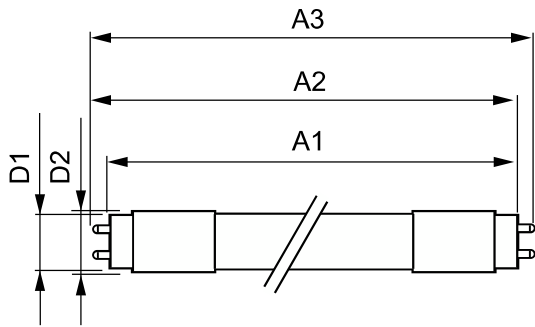
Energy Efficiency Class	A
-------------------------	---

Energy Saving Product	Yes
Approval Marks	RoHS compliance TUV CE marking KEMA Keur certificate
Energy Consumption kWh/1000 h	12 kWh
EPREL Registration Number	1013082

## Product Data

Order product name	MAS LEDtube 1200mm UE 11.9W 840 T8 EELA
Full product name	MAS LEDtube 1200mm UE 11.9W 840 T8 EELA
Full product code	871951443166900
Order code	929003482202
Material Nr. (12NC)	929003482202
Numerator - Quantity Per Pack	1
EAN/UPC - Product/Case	8719514431669
Numerator - Packs per outer box	10
EAN/UPC - Case	8719514431676

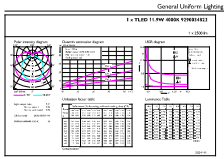
## Dimensional drawing



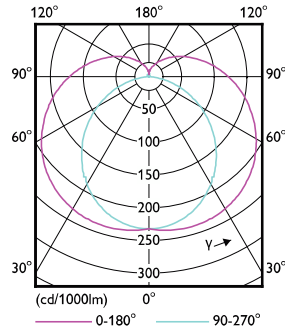
Product	D1	D2	A1	A2	A3
MAS LEDtube 1200mm UE 11.9W	25.8 mm	28 mm	1,198.2 mm	1,205.3 mm	1,212.4 mm
840 T8 EELA					

# MASTER LEDtube T8 Ultra Efficient

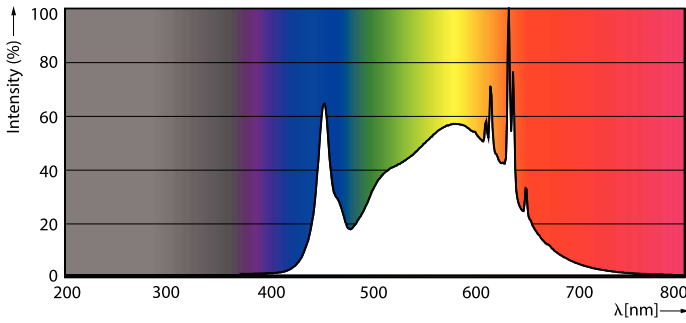
## Photometric data



General uniform lighting - MAS LEDtube 1200mm UE 11.9W 840 T8 EELA

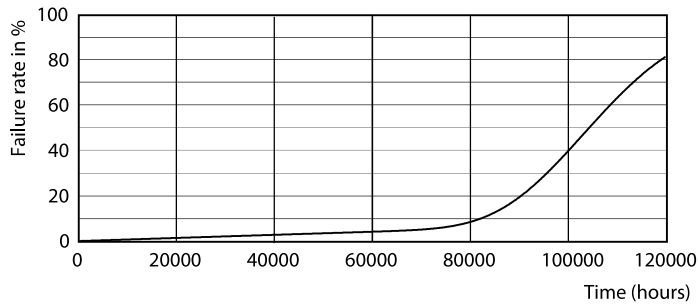


Light Distribution Diagram - MAS LEDtube 1200mm UE 11.9W 840 T8 EELA

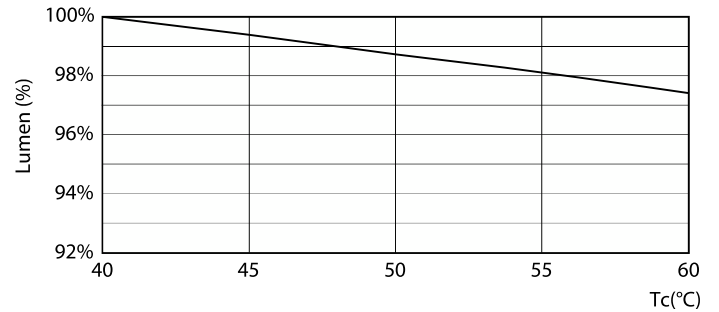


Spectral Power Distribution Colour - MAS LEDtube 1200mm UE 11.9W 840 T8 EELA

## Lifetime



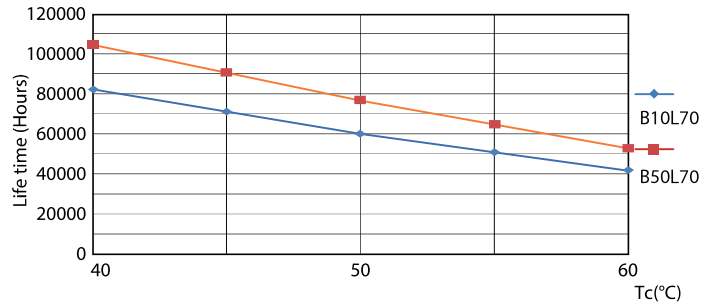
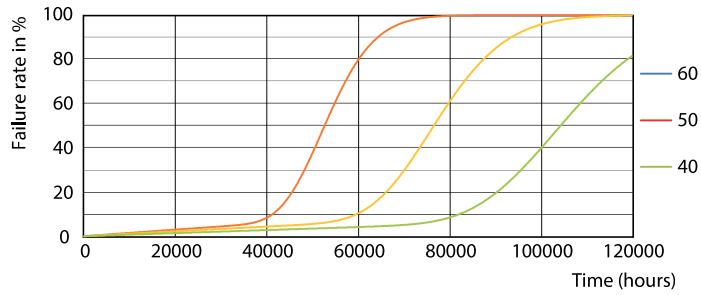
Life Expectancy Diagram - MAS LEDtube 1200mm UE 11.9W 840 T8 EELA



Lumen Maintenance Diagram - MAS LEDtube 1200mm UE 11.9W 840 T8 EELA

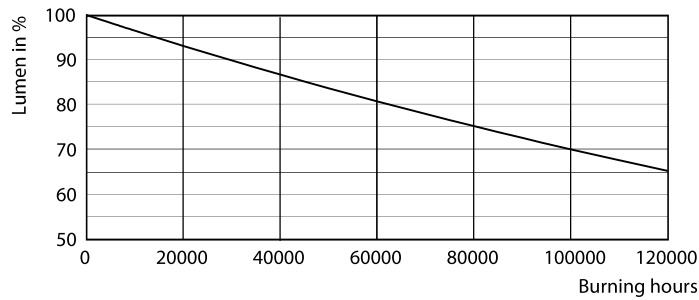
# MASTER LEDtube T8 Ultra Efficient

## Lifetime



Life Expectancy Diagram - MAS LEDtube 1200mm UE 11.9W 840 T8 EELA

Life Expectancy Diagram - MAS LEDtube 1200mm UE 11.9W 840 T8 EELA



Lumen Maintenance Diagram - MAS LEDtube 1200mm UE 11.9W 840 T8 EELA

