



MASTER LEDtube Mains T5



MASTER LEDtube 1500mm HO 26W 865 T5

The new Philips Master LEDtube Mains T5 brings simplicity to your lighting project. You don't need to pay attention to the driver technology anymore. Thanks to a unique design, Philips MASTER LEDtube Mains T5 installs in luminaires operating on mains power connection. So simple to operate! . Perfectly safe, reliable & easy to install, the Philips MASTER LEDtube Mains T5 is the ideal alternative to standard fluorescent tubes to maximise value over lifetime with high energy savings and lower maintenance costs.

Product data

General Information	
Cap base	G5 [G5]
Nominal lifetime	50,000 h
Switching Cycle	200,000
Lighting Technology	LED
Flux measurement reference	Sphere
CE mark	Yes
EU RoHS compliant	Yes

Light Technical	
Colour Code	865 [CCT of 6500K]
Beam angle (nom.)	200 degree(s)
Luminous Flux	3,900 lm
Colour designation	Cool Daylight
Correlated Colour Temperature	6500 K
Luminous efficacy (rated) (nom.)	150 lm/W
Colour consistency	<6
Colour rendering index (CRI)	80

LLMF at end of nominal lifetime (nom.)	70 %
Flickering value (PstLM)	1
Stroboscopic effect	0.4
Photobiological safety according to EN 62471	RG0

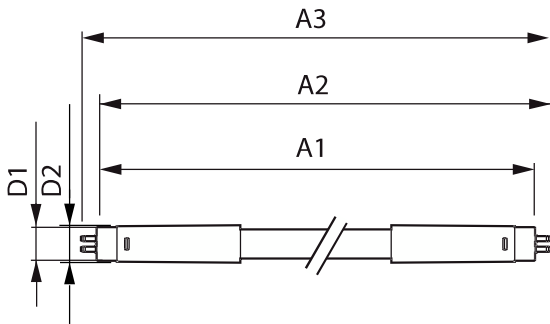
Operating and Electrical	
Line Frequency	50 to 60 Hz
Input frequency	50 to 60 Hz
Power Consumption	26 W
Lamp current (nom.)	125 mA
Wattage equivalent	49 W
Starting time (nom.)	0.5 s
Warm-up time to 60% light	0.5 s
Power Factor (Fraction)	0.92
Voltage (nom.)	220-240 V
LED alternative to fluorescent lamp power	49 W

MASTER LEDtube Mains T5

Temperature	
Ambient temperature range	-20 to +45 °C
T-Case maximum (nom.)	65 °C
Controls and Dimming	
Dimmable	No
Mechanical and Housing	
Lamp Finish	Frosted
Bulb material	Glass
Product length	1,500 mm
Bulb shape	Tube, double-ended
Approval and Application	
Energy Efficiency Class	D
Energy-saving product	Yes
Approval marks	RoHS compliance TUV CE marking KEMA Keur certificate

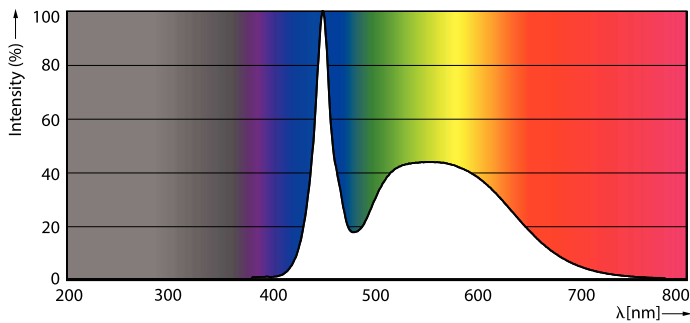
Energy consumption kWh/1,000 hours	26 kWh
EPREL registration number	1476413
Product Data	
Full EOC	871869681933300
Order product name	MAS LEDtube 1500mm HO 26W 865 T5
Order code	81933300
SAP numerator – quantity per pack	1
Numerator – packs per outer box	10
Material no. (12 NC)	929001909002
Full product name	MASTER LEDtube 1500mm HO 26W 865 T5
EAN/UPC - Case	87186968193340
EAN/UPC - Product/Case	8718696819333

Dimensional drawing

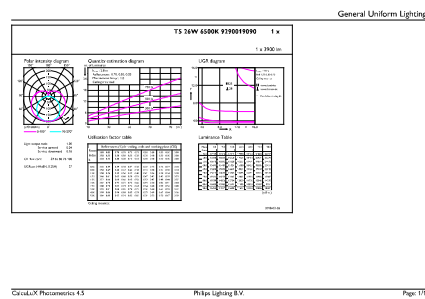


Product	D1	D2	A1	A2	A3
MAS LEDtube 1500mm HO 26W 865 T5	15.5 mm	17.1 mm	1,449 mm	1,456 mm	1,463 mm

Photometric data



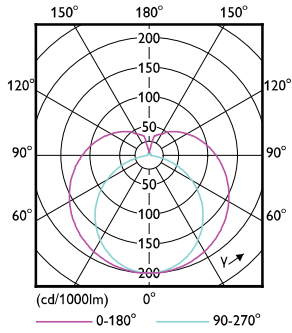
Spectral Power Distribution Colour - MAS LEDtube 1500mm HO 26W 865 T5



General uniform lighting - MAS LEDtube 1500mm HO 26W 865 T5

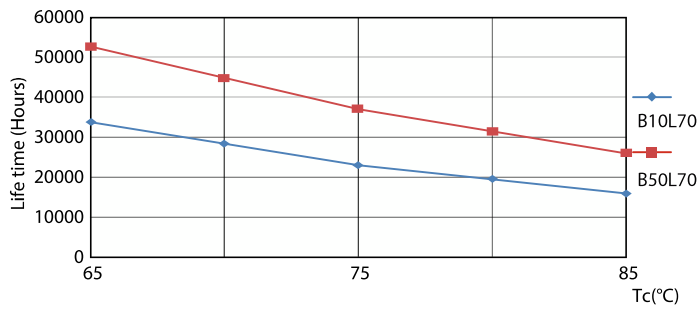
MASTER LEDtube Mains T5

Photometric data

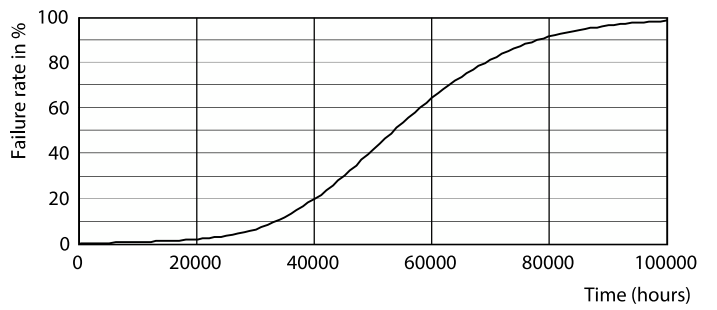


Light Distribution Diagram - MAS LEDtube 1500mm HO 26W 865 T5

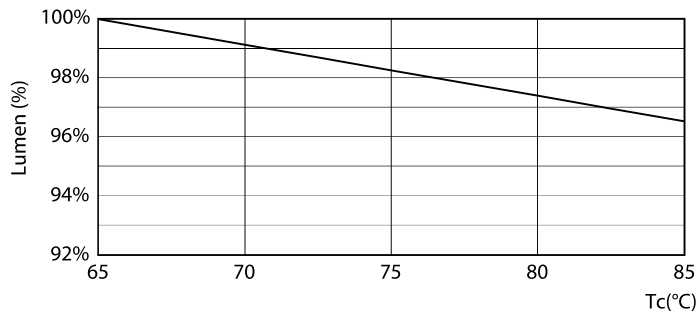
Lifetime



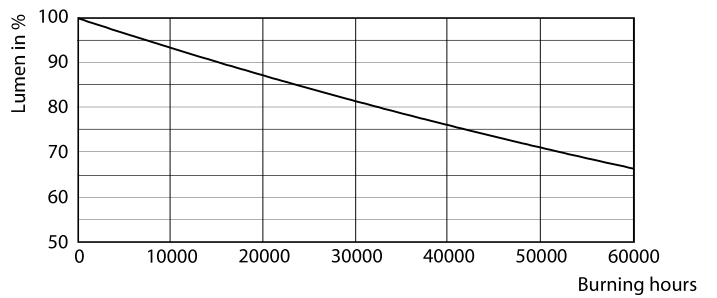
Life Expectancy Diagram



Life Expectancy Diagram - MAS LEDtube 1500mm HO 26W 865 T5



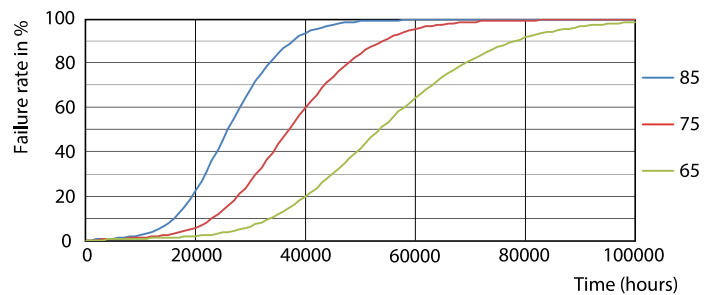
Lumen Maintenance Diagram - MAS LEDtube 1500mm HO 26W 865 T5



Lumen Maintenance Diagram - MAS LEDtube 1500mm HO 26W 865 T5

MASTER LEDtube Mains T5

Lifetime



Life Expectancy Diagram

