



# MASTER LEDtube InstantFit HF T5



## Master LEDtube HF 1200mm HE 16.5W 840 T5

The Philips MASTER LEDtube integrates a LED light source into a traditional fluorescent form factor. Its unique design creates a perfectly uniform visual appearance, which cannot be distinguished from traditional fluorescent. These T5 lighting tubes are the right choice for absolute performance and are designed to stand up to everyday conditions. Unparalleled savings thanks to low energy consumption and an exceptionally long lifetime make these T5 LED tubes the choice for every demanding application.

### Product data

General information	
Cap-Base	G5 [ G5]
EU RoHS compliant	Yes
Nominal Lifetime (Nom)	60000 h
Switching Cycle	50000X
Flux measurement reference	Sphere

Light technical	
Color Code	840 [ CCT of 4000K]
Beam Angle (Nom)	200 °
Luminous Flux (Nom)	2500 lm
Color Designation	Cool White (CW)
Correlated Color Temperature (Nom)	4000 K
Luminous Efficacy (rated) (Nom)	151.00 lm/W
Color Consistency	<6
Color Rendering Index (Nom)	80
LLMF At End Of Nominal Lifetime (Nom)	70 %

Operating and electrical	
Input Frequency	30K to 100K Hz
Power (Nom)	16.5 W
Lamp Current (Max)	350 mA
Lamp Current (Min)	150 mA
Starting Time (Nom)	0.5 s
Warm Up Time to 60% Light (Nom)	0.5 s
Power Factor (Nom)	0.92
Voltage (Nom)	70-120 V

Temperature	
T-Ambient (Max)	45 °C
T-Ambient (Min)	-20 °C
T-Storage (Max)	65 °C
T-Storage (Min)	-40 °C
T-Case Maximum (Nom)	65 °C

# MASTER LEDtube InstantFit HF T5

## Controls and dimming

Dimmable	Yes - Check ballast compatibility
----------	-----------------------------------

## Mechanical and housing

Bulb Finish	Frosted
Bulb Material	Glass
Product Length	1200 mm
Bulb Shape	Tube, double-ended

## Approval and application

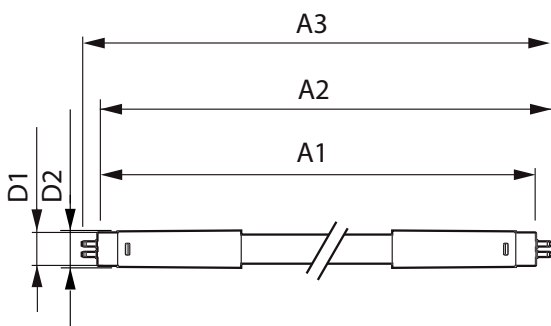
Energy Efficiency Class	D
Energy Saving Product	Yes
Approval Marks	RoHS compliance TUV CE marking KEMA Keur certificate

Energy Consumption kWh/1000 h	17 kWh
EPREL Registration Number	406187

## Product data

Full product code	871869674331700
Order product name	Master LEDtube HF 1200mm HE 16.5W 840 T5
EAN/UPC - Product	8718696743317
Order code	929001391102
Numerator - Quantity Per Pack	1
Numerator - Packs per outer box	10
Material Nr. (12NC)	929001391102
Net Weight (Piece)	0.159 kg

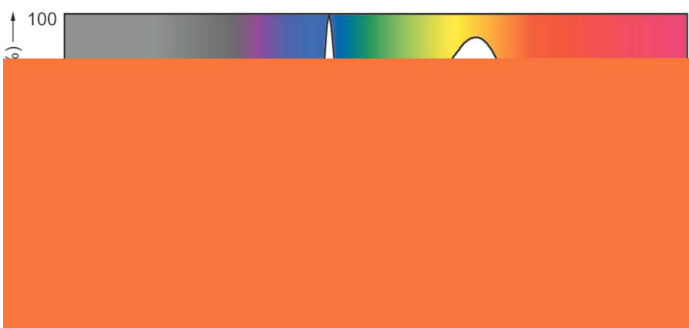
## Dimensional drawing



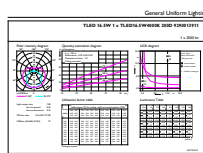
Master LEDtube HF 1200mm HE 16.5W 840 T5

Product	D1	D2	A1	A2	A3
Master LEDtube HF 1200mm HE 16.5W 840 T5	15.5 mm	18.8 mm	1149 mm	1156.1 mm	1163.2 mm

## Photometric data



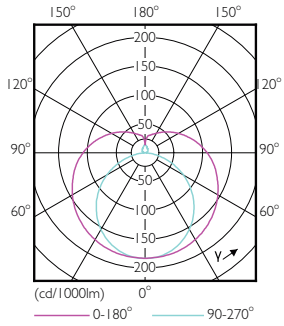
LEDtube 13W G13 2100lm



LEDtube 1200mm 16-5W G5 840 2500lm

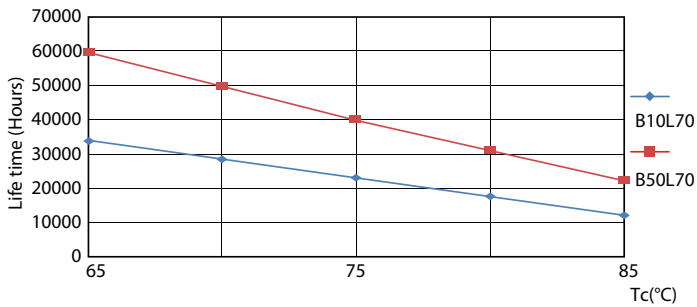
# MASTER LEDtube InstantFit HF T5

## Photometric data

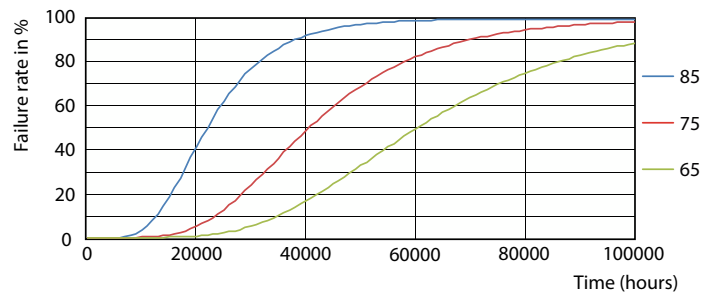


LEDtube 600mm 8W G5 830 1000lm

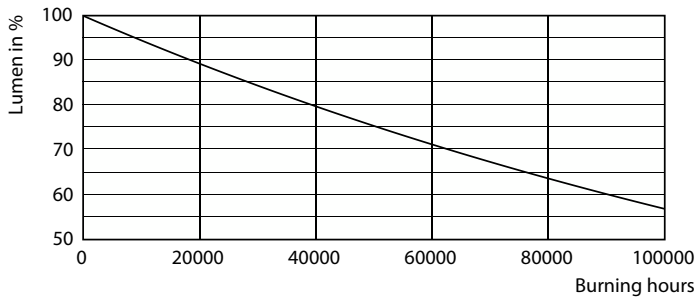
## Lifetime



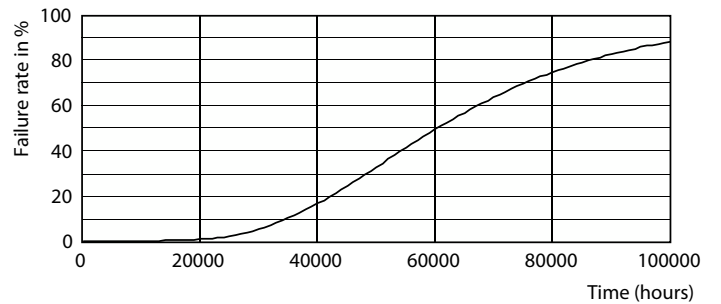
LifetimeVsTc



FailureRate



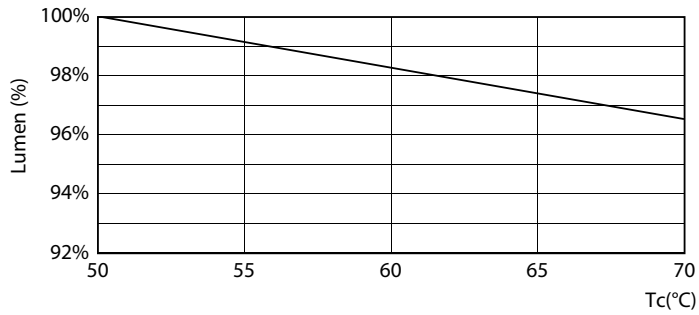
Lumen Maintenance Diagram



Life Expectancy Diagram

# MASTER LEDtube InstantFit HF T5

## Lifetime



LEDtube MAS SLR 16,5W 60K LumenVsTc-LMP

