

LEDVANCE LUMINAIRES

AREA FLOOD

LEDVANCE LUMINAIRE SPECIFICATION DATA

Catalog #	Comments
Project	
Type	
Prepared by	

SUPERIOR CLASS



APPLICATION

The LEDVANCE Superior Class Area Flood luminaires boast a 10 year warranty and are TAA compliant. An optional sensor can be installed to allow for daylight harvesting and provides additional energy savings. Each luminaire ships with a universal mounting bracket allowing easy installation to round and square poles or slipfitters.

BENEFITS & FEATURES

- Integrated 7 pin photocontrol receptacle compatible with Standard NEMA photocell or 5 pin and 7 pin controllers. Shorting cap included.
- DLC 5.1 Premium listed to maximize rebate opportunities and to provide even, uniform lighting
- IP65 rated body offered in a modern and sleek design
- 3G Vibration rated
- Optional photosensor provides additional energy savings
- Up to 160 LPW
- 3000K, 4000K or 5000K color temperature
- CRI >80
- Offered in 3 wattage selectable versions:
 - 50, 70, 100; 120, 150, 190; or 240, 270, 290 watts
 - Up to 15,900; up to 30,300; up to 43,800 lumens respectively
- Type II, III, IV, V or Front Row distribution
- Energy savings up to 77%



ELECTRICAL

- 120-277Vac (UNV) or 277-480Vac (HUV)
- Power Factor >0.9
- THD <20%
- Continuous 0-10V dimmable down to 10% of power
- 0-10V ANSI C137.1 (9V)
- Surge protection: 10kV

WARRANTY

- 10-year warranty (if operated up to 114°F/45°C) or 7-year warranty (if operated up to 122°F/50°C)
- NLB Trusted Warranty Program

CERTIFICATIONS & LISTINGS

- cULus listed to UL1598 standards, wet location
- RoHS
- FCC
- IP65
- DLC 5.1 Premium
- TAA
- Dark Sky Compliant*
- DLC LUNA

*DLC LUNA and Dark Sky Compliant for 3000K products with fixed mounting bracket only

RATED LIFE

- 150,000 hours (L70) – 100W and 190W
- 130,000 hours (L70) – 290W

OPERATING TEMPERATURE

- -40°F to +122°F (-40°C to +50°C)

INSTALLATION

- Universal mounting bracket for round/square pole and slipfitter mounting
- Fixed mounting bracket with 0° tilt for round/square pole mounting – required for Dark Sky Compliance

WATTAGE COMPARISON

LED SOURCE WATTAGE/LUMENS	REPLACES TRADITIONAL SOURCE	ENERGY SAVINGS
100W/14,700lm	HPS/MH	up to 250W
190W/28,500lm		up to 400W
290W/43,000lm		up to 1000W

ORDERING GUIDE

AREAFLD	4A	/	SXXX	XXV	D	8	XX	XX	/	XX	/	XXX
PRODUCT NAME	GENERATION		SELECTABLE WATTAGE	VOLTAGE	DIMMING	CRI	COLOR TEMP	DISTRIBUTION		COLOR / FINISH		OPTIONS
AREAFLD = Area Floodlight Luminaire	4A = Generation 4A		S100 = 50, 70 or 100W S190 = 120, 150 or 190W S290 = 240, 270 or 290W	UNV = 120-277V HUV = 277-480V	D = 0-10V Dimming	8 = >80	30 = 3000K 40 = 4000K 50 = 5000K	T2 = Type II T3 = Type III T4 = Type IV T5 = Type V FR = Front Row		BZ = Bronze BL = Black* GR = Gray* WH = White*		BLE = Bluetooth® Zhaga Sensor

*MTO finishes – Other MTO finishes available upon request; contact Sales Rep.

ORDERING INFORMATION

ITEM #	ORDERING ABBREVIATION	POWER (W)	INPUT VOLTAGE (V)	DIMMING	CRI	COLOR TEMP	DISTRIBUTION	TOTAL FIXTURE LUMENS (LM)	DLC	LPW	OPTIONS	MTO*	BUG RATING
62844	AREAFLD4AS100UNVD830FRBZ	50/70/100	120-277V	0-10V	>80	3000K	Front Row	7750/10,850/14,700	5.1 Prm	155		✓	B4U0G2
65773	AREAFLD4AS100UNVD830T2BZ	50/70/100	120-277V	0-10V	>80	3000K	Type II	7750/10,850/14,700	5.1 Prm	155		✓	B4U0G2
65774	AREAFLD4AS100UNVD830T3BZ	50/70/100	120-277V	0-10V	>80	3000K	Type III	7750/10,850/14,700	5.1 Prm	155		✓	B4U0G2
65775	AREAFLD4AS100UNVD830T4BZ	50/70/100	120-277V	0-10V	>80	3000K	Type IV	7750/10,850/14,700	5.1 Prm	155		✓	B4U0G2
65776	AREAFLD4AS100UNVD830T5BZ	50/70/100	120-277V	0-10V	>80	3000K	Type V	7750/10,850/14,700	5.1 Prm	155		✓	B4U0G2
62845	AREAFLD4AS100UNVD840FRBZ	50/70/100	120-277V	0-10V	>80	4000K	Front Row	7750/10,850/14,700	5.1 Prm	155		✓	B4U0G2
65777	AREAFLD4AS100UNVD840T2BZ	50/70/100	120-277V	0-10V	>80	4000K	Type II	7750/10,850/14,700	5.1 Prm	155		✓	B4U0G2
65778	AREAFLD4AS100UNVD840T3BZ	50/70/100	120-277V	0-10V	>80	4000K	Type III	7750/10,850/14,700	5.1 Prm	155		✓	B4U0G2
65779	AREAFLD4AS100UNVD840T4BZ	50/70/100	120-277V	0-10V	>80	4000K	Type IV	7750/10,850/14,700	5.1 Prm	155		✓	B4U0G2
65780	AREAFLD4AS100UNVD840T5BZ	50/70/100	120-277V	0-10V	>80	4000K	Type V	7750/10,850/14,700	5.1 Prm	155		-	B4U0G2
62846	AREAFLD4AS100UNVD850FRBZ	50/70/100	120-277V	0-10V	>80	5000K	Front Row	7750/10,850/14,700	5.1 Prm	155		✓	B4U0G2
65781	AREAFLD4AS100UNVD850T2BZ	50/70/100	120-277V	0-10V	>80	5000K	Type II	7750/10,850/14,700	5.1 Prm	155		✓	B4U0G2
65782	AREAFLD4AS100UNVD850T3BZ	50/70/100	120-277V	0-10V	>80	5000K	Type III	7750/10,850/14,700	5.1 Prm	155		✓	B4U0G2
65783	AREAFLD4AS100UNVD850T4BZ	50/70/100	120-277V	0-10V	>80	5000K	Type IV	7750/10,850/14,700	5.1 Prm	155		✓	B4U0G2
65784	AREAFLD4AS100UNVD850T5BZ	50/70/100	120-277V	0-10V	>80	5000K	Type V	7750/10,850/14,700	5.1 Prm	155		-	B4U0G2
63805	AREAFLD4AS100UNVD830FRBL	50/70/100	120-277V	0-10V	>80	3000K	Front Row	7750/10,850/14,700	5.1 Prm	155		✓	B4U0G2
63806	AREAFLD4AS100UNVD830T2BL	50/70/100	120-277V	0-10V	>80	3000K	Type II	7750/10,850/14,700	5.1 Prm	155		✓	B4U0G2
63807	AREAFLD4AS100UNVD830T3BL	50/70/100	120-277V	0-10V	>80	3000K	Type III	7750/10,850/14,700	5.1 Prm	155		✓	B4U0G2
63808	AREAFLD4AS100UNVD830T4BL	50/70/100	120-277V	0-10V	>80	3000K	Type IV	7750/10,850/14,700	5.1 Prm	155		✓	B4U0G2
63809	AREAFLD4AS100UNVD830T5BL	50/70/100	120-277V	0-10V	>80	3000K	Type V	7750/10,850/14,700	5.1 Prm	155		✓	B4U0G2
63658	AREAFLD4AS100UNVD840T2BL	50/70/100	120-277V	0-10V	>80	4000K	Type II	7750/10,850/14,700	5.1 Prm	155		✓	B4U0G2
63227	AREAFLD4AS100UNVD840T3BL	50/70/100	120-277V	0-10V	>80	4000K	Type III	7750/10,850/14,700	5.1 Prm	155		✓	B4U0G2
63660	AREAFLD4AS100UNVD840T4BL	50/70/100	120-277V	0-10V	>80	4000K	Type IV	7750/10,850/14,700	5.1 Prm	155		✓	B4U0G2
63661	AREAFLD4AS100UNVD840T5BL	50/70/100	120-277V	0-10V	>80	4000K	Type V	7750/10,850/14,700	5.1 Prm	155		✓	B4U0G2
63810	AREAFLD4AS100UNVD850FRBL	50/70/100	120-277V	0-10V	>80	5000K	Front Row	7750/10,850/14,700	5.1 Prm	155		✓	B4U0G2
63811	AREAFLD4AS100UNVD850T2BL	50/70/100	120-277V	0-10V	>80	5000K	Type II	7750/10,850/14,700	5.1 Prm	155		✓	B4U0G2
63812	AREAFLD4AS100UNVD850T3BL	50/70/100	120-277V	0-10V	>80	5000K	Type III	7750/10,850/14,700	5.1 Prm	155		✓	B4U0G2
63813	AREAFLD4AS100UNVD850T4BL	50/70/100	120-277V	0-10V	>80	5000K	Type IV	7750/10,850/14,700	5.1 Prm	155		✓	B4U0G2
63814	AREAFLD4AS100UNVD850T5BL	50/70/100	120-277V	0-10V	>80	5000K	Type V	7750/10,850/14,700	5.1 Prm	155		✓	B4U0G2
63640	AREAFLD4AS100UNVD830T2WH	50/70/100	120-277V	0-10V	>80	3000K	Type II	7750/10,850/14,700	5.1 Prm	155		✓	B4U0G2
63641	AREAFLD4AS100UNVD830T3WH	50/70/100	120-277V	0-10V	>80	3000K	Type III	7750/10,850/14,700	5.1 Prm	155		✓	B4U0G2
63642	AREAFLD4AS100UNVD830T4WH	50/70/100	120-277V	0-10V	>80	3000K	Type IV	7750/10,850/14,700	5.1 Prm	155		✓	B4U0G2
63643	AREAFLD4AS100UNVD830T5WH	50/70/100	120-277V	0-10V	>80	3000K	Type V	7750/10,850/14,700	5.1 Prm	155		✓	B4U0G2
63644	AREAFLD4AS100UNVD840T2WH	50/70/100	120-277V	0-10V	>80	4000K	Type II	7750/10,850/14,700	5.1 Prm	155		✓	B4U0G2
63645	AREAFLD4AS100UNVD840T3WH	50/70/100	120-277V	0-10V	>80	4000K	Type III	7750/10,850/14,700	5.1 Prm	155		✓	B4U0G2

ORDERING INFORMATION (CONTINUED)

ITEM #	ORDERING ABBREVIATION	POWER (W)	INPUT VOLTAGE (V)	DIMMING	CRI	COLOR TEMP	DISTRIBUTION	TOTAL FIXTURE LUMENS (LM)	DLC	LPW	OPTIONS	MTO*	BUG RATING
63646	AREAFLD4AS100UNVD840T4WH	50/70/100	120-277V	0-10V	>80	4000K	Type IV	7750/10,850/14,700	5.1 Prm	155		✓	B4U0G2
63647	AREAFLD4AS100UNVD840T5WH	50/70/100	120-277V	0-10V	>80	4000K	Type V	7750/10,850/14,700	5.1 Prm	155		✓	B4U0G2
63648	AREAFLD4AS100UNVD850T2WH	50/70/100	120-277V	0-10V	>80	5000K	Type II	7750/10,850/14,700	5.1 Prm	155		✓	B4U0G2
63649	AREAFLD4AS100UNVD850T3WH	50/70/100	120-277V	0-10V	>80	5000K	Type III	7750/10,850/14,700	5.1 Prm	155		✓	B4U0G2
63650	AREAFLD4AS100UNVD850T4WH	50/70/100	120-277V	0-10V	>80	5000K	Type IV	7750/10,850/14,700	5.1 Prm	155		✓	B4U0G2
63651	AREAFLD4AS100UNVD850T5WH	50/70/100	120-277V	0-10V	>80	5000K	Type V	7750/10,850/14,700	5.1 Prm	155		✓	B4U0G2
63141	AREAFLD4AS190UNVD830FRBZ	120/150/190	120-277V	0-10V	>80	3000K	Front Row	18,000/22,500/28,500	5.1 Prm	150		✓	B4U0G2
65749	AREAFLD4AS190UNVD830T2BZ	120/150/190	120-277V	0-10V	>80	3000K	Type II	18,000/22,500/28,500	5.1 Prm	150		✓	B4U0G2
65750	AREAFLD4AS190UNVD830T3BZ	120/150/190	120-277V	0-10V	>80	3000K	Type III	18,000/22,500/28,500	5.1 Prm	150		✓	B4U0G2
65751	AREAFLD4AS190UNVD830T4BZ	120/150/190	120-277V	0-10V	>80	3000K	Type IV	18,000/22,500/28,500	5.1 Prm	150		✓	B4U0G2
65752	AREAFLD4AS190UNVD830T5BZ	120/150/190	120-277V	0-10V	>80	3000K	Type V	18,000/22,500/28,500	5.1 Prm	150		✓	B4U0G2
63142	AREAFLD4AS190UNVD840FRBZ	120/150/190	120-277V	0-10V	>80	4000K	Front Row	18,000/22,500/28,500	5.1 Prm	150		✓	B4U0G2
65753	AREAFLD4AS190UNVD840T2BZ	120/150/190	120-277V	0-10V	>80	4000K	Type II	18,000/22,500/28,500	5.1 Prm	150		✓	B4U0G2
65754	AREAFLD4AS190UNVD840T3BZ	120/150/190	120-277V	0-10V	>80	4000K	Type III	18,000/22,500/28,500	5.1 Prm	150		✓	B4U0G2
65755	AREAFLD4AS190UNVD840T4BZ	120/150/190	120-277V	0-10V	>80	4000K	Type IV	18,000/22,500/28,500	5.1 Prm	150		✓	B4U0G2
65756	AREAFLD4AS190UNVD840T5BZ	120/150/190	120-277V	0-10V	>80	4000K	Type V	18,000/22,500/28,500	5.1 Prm	150		-	B4U0G2
63143	AREAFLD4AS190UNVD850FRBZ	120/150/190	120-277V	0-10V	>80	5000K	Front Row	18,000/22,500/28,500	5.1 Prm	150		✓	B4U0G2
65757	AREAFLD4AS190UNVD850T2BZ	120/150/190	120-277V	0-10V	>80	5000K	Type II	18,000/22,500/28,500	5.1 Prm	150		✓	B4U0G2
65758	AREAFLD4AS190UNVD850T3BZ	120/150/190	120-277V	0-10V	>80	5000K	Type III	18,000/22,500/28,500	5.1 Prm	150		✓	B4U0G2
65759	AREAFLD4AS190UNVD850T4BZ	120/150/190	120-277V	0-10V	>80	5000K	Type IV	18,000/22,500/28,500	5.1 Prm	150		✓	B4U0G2
65760	AREAFLD4AS190UNVD850T5BZ	120/150/190	120-277V	0-10V	>80	5000K	Type V	18,000/22,500/28,500	5.1 Prm	150			B4U0G2
63946	AREAFLD4AS190UNVD830T2BL	120/150/190	120-277V	0-10V	>80	3000K	Type II	18,000/22,500/28,500	5.1 Prm	150		✓	B4U0G2
63947	AREAFLD4AS190UNVD830T3BL	120/150/190	120-277V	0-10V	>80	3000K	Type III	18,000/22,500/28,500	5.1 Prm	150		✓	B4U0G2
63948	AREAFLD4AS190UNVD830T4BL	120/150/190	120-277V	0-10V	>80	3000K	Type IV	18,000/22,500/28,500	5.1 Prm	150		✓	B4U0G2
63949	AREAFLD4AS190UNVD830T5BL	120/150/190	120-277V	0-10V	>80	3000K	Type V	18,000/22,500/28,500	5.1 Prm	150		✓	B4U0G2
63950	AREAFLD4AS190UNVD840T2BL	120/150/190	120-277V	0-10V	>80	4000K	Type II	18,000/22,500/28,500	5.1 Prm	150		✓	B4U0G2
63951	AREAFLD4AS190UNVD840T3BL	120/150/190	120-277V	0-10V	>80	4000K	Type III	18,000/22,500/28,500	5.1 Prm	150		✓	B4U0G2
63952	AREAFLD4AS190UNVD840T4BL	120/150/190	120-277V	0-10V	>80	4000K	Type IV	18,000/22,500/28,500	5.1 Prm	150		✓	B4U0G2
63953	AREAFLD4AS190UNVD840T5BL	120/150/190	120-277V	0-10V	>80	4000K	Type V	18,000/22,500/28,500	5.1 Prm	150		✓	B4U0G2
63954	AREAFLD4AS190UNVD850T2BL	120/150/190	120-277V	0-10V	>80	5000K	Type II	18,000/22,500/28,500	5.1 Prm	150		✓	B4U0G2
63955	AREAFLD4AS190UNVD850T3BL	120/150/190	120-277V	0-10V	>80	5000K	Type III	18,000/22,500/28,500	5.1 Prm	150		✓	B4U0G2
63956	AREAFLD4AS190UNVD850T4BL	120/150/190	120-277V	0-10V	>80	5000K	Type IV	18,000/22,500/28,500	5.1 Prm	150		✓	B4U0G2

ORDERING INFORMATION (CONTINUED)

ITEM #	ORDERING ABBREVIATION	POWER (W)	INPUT VOLTAGE (V)	DIMMING	CRI	COLOR TEMP	DISTRIBUTION	TOTAL FIXTURE LUMENS (LM)	DLC	LPW	OPTIONS	MTO*	BUG RATING
63957	AREAFLD4AS190UNVD850T5BL	120/150/190	120-277V	0-10V	>80	5000K	Type V	18,000/22,500/28,500	5.1 Prm	150		✓	B4U0G2
63934	AREAFLD4AS190UNVD830T2WH	120/150/190	120-277V	0-10V	>80	3000K	Type II	18,000/22,500/28,500	5.1 Prm	150		✓	B4U0G2
63935	AREAFLD4AS190UNVD830T3WH	120/150/190	120-277V	0-10V	>80	3000K	Type III	18,000/22,500/28,500	5.1 Prm	150		✓	B4U0G2
63936	AREAFLD4AS190UNVD830T4WH	120/150/190	120-277V	0-10V	>80	3000K	Type IV	18,000/22,500/28,500	5.1 Prm	150		✓	B4U0G2
63937	AREAFLD4AS190UNVD830T5WH	120/150/190	120-277V	0-10V	>80	3000K	Type V	18,000/22,500/28,500	5.1 Prm	150		✓	B4U0G2
63662	AREAFLD4AS190UNVD840FRWH	120/150/190	120-277V	0-10V	>80	4000K	Front Row	18,000/22,500/28,500	5.1 Prm	150		✓	B4U0G2
63663	AREAFLD4AS190UNVD840T2WH	120/150/190	120-277V	0-10V	>80	4000K	Type II	18,000/22,500/28,500	5.1 Prm	150		✓	B4U0G2
63664	AREAFLD4AS190UNVD840T3WH	120/150/190	120-277V	0-10V	>80	4000K	Type III	18,000/22,500/28,500	5.1 Prm	150		✓	B4U0G2
63665	AREAFLD4AS190UNVD840T4WH	120/150/190	120-277V	0-10V	>80	4000K	Type IV	18,000/22,500/28,500	5.1 Prm	150		✓	B4U0G2
63666	AREAFLD4AS190UNVD840T5WH	120/150/190	120-277V	0-10V	>80	4000K	Type V	18,000/22,500/28,500	5.1 Prm	150		✓	B4U0G2
63613	AREAFLD4AS190UNVD850FRWH	120/150/190	120-277V	0-10V	>80	5000K	Front Row	18,000/22,500/28,500	5.1 Prm	150		✓	B4U0G2
63614	AREAFLD4AS190UNVD850T2WH	120/150/190	120-277V	0-10V	>80	5000K	Type II	18,000/22,500/28,500	5.1 Prm	150		✓	B4U0G2
63615	AREAFLD4AS190UNVD850T3WH	120/150/190	120-277V	0-10V	>80	5000K	Type III	18,000/22,500/28,500	5.1 Prm	150		✓	B4U0G2
63616	AREAFLD4AS190UNVD850T4WH	120/150/190	120-277V	0-10V	>80	5000K	Type IV	18,000/22,500/28,500	5.1 Prm	150		✓	B4U0G2
63617	AREAFLD4AS190UNVD850T5WH	120/150/190	120-277V	0-10V	>80	5000K	Type V	18,000/22,500/28,500	5.1 Prm	150		✓	B4U0G2
65761	AREAFLD4AS290UNVD830T2BZ	240/270/290	120-277V	0-10V	>80	3000K	Type II	37,200/41,850/43,000	5.1 Prm	155		✓	B5U0G3
65762	AREAFLD4AS290UNVD830T3BZ	240/270/290	120-277V	0-10V	>80	3000K	Type III	37,200/41,850/43,000	5.1 Prm	155		✓	B5U0G3
65763	AREAFLD4AS290UNVD830T4BZ	240/270/290	120-277V	0-10V	>80	3000K	Type IV	37,200/41,850/43,000	5.1 Prm	155		✓	B5U0G3
65764	AREAFLD4AS290UNVD830T5BZ	240/270/290	120-277V	0-10V	>80	3000K	Type V	37,200/41,850/43,000	5.1 Prm	155		✓	B5U0G3
65765	AREAFLD4AS290UNVD840T2BZ	240/270/290	120-277V	0-10V	>80	4000K	Type II	37,200/41,850/43,000	5.1 Prm	155		✓	B5U0G3
65766	AREAFLD4AS290UNVD840T3BZ	240/270/290	120-277V	0-10V	>80	4000K	Type III	37,200/41,850/43,000	5.1 Prm	155		✓	B5U0G3
65767	AREAFLD4AS290UNVD840T4BZ	240/270/290	120-277V	0-10V	>80	4000K	Type IV	37,200/41,850/43,000	5.1 Prm	155		✓	B5U0G3
65768	AREAFLD4AS290UNVD840T5BZ	240/270/290	120-277V	0-10V	>80	4000K	Type V	37,200/41,850/43,000	5.1 Prm	155		-	B5U0G3
65769	AREAFLD4AS290UNVD850T2BZ	240/270/290	120-277V	0-10V	>80	5000K	Type II	37,200/41,850/43,000	5.1 Prm	155		✓	B5U0G3
65770	AREAFLD4AS290UNVD850T3BZ	240/270/290	120-277V	0-10V	>80	5000K	Type III	37,200/41,850/43,000	5.1 Prm	155		✓	B5U0G3
65771	AREAFLD4AS290UNVD850T4BZ	240/270/290	120-277V	0-10V	>80	5000K	Type IV	37,200/41,850/43,000	5.1 Prm	155		✓	B5U0G3
65772	AREAFLD4AS290UNVD850T5BZ	240/270/290	120-277V	0-10V	>80	5000K	Type V	37,200/41,850/43,000	5.1 Prm	155		-	B5U0G3
63938	AREAFLD4AS290UNVD830T2BL	240/270/290	120-277V	0-10V	>80	3000K	Type II	37,200/41,850/43,000	5.1 Prm	155		✓	B5U0G3
63939	AREAFLD4AS290UNVD830T3BL	240/270/290	120-277V	0-10V	>80	3000K	Type III	37,200/41,850/43,000	5.1 Prm	155		✓	B5U0G3
63940	AREAFLD4AS290UNVD830T4BL	240/270/290	120-277V	0-10V	>80	3000K	Type IV	37,200/41,850/43,000	5.1 Prm	155		✓	B5U0G3
63941	AREAFLD4AS290UNVD830T5BL	240/270/290	120-277V	0-10V	>80	3000K	Type V	37,200/41,850/43,000	5.1 Prm	155		✓	B5U0G3
63942	AREAFLD4AS290UNVD840T2BL	240/270/290	120-277V	0-10V	>80	4000K	Type II	37,200/41,850/43,000	5.1 Prm	155		✓	B5U0G3
63943	AREAFLD4AS290UNVD840T3BL	240/270/290	120-277V	0-10V	>80	4000K	Type III	37,200/41,850/43,000	5.1 Prm	155		✓	B5U0G3
63944	AREAFLD4AS290UNVD840T4BL	240/270/290	120-277V	0-10V	>80	4000K	Type IV	37,200/41,850/43,000	5.1 Prm	155		✓	B5U0G3
63945	AREAFLD4AS290UNVD840T5BL	240/270/290	120-277V	0-10V	>80	4000K	Type V	37,200/41,850/43,000	5.1 Prm	155		✓	B5U0G3

ORDERING INFORMATION (CONTINUED)

ITEM #	ORDERING ABBREVIATION	POWER (W)	INPUT VOLTAGE (V)	DIMMING	CRI	COLOR TEMP	DISTRIBUTION	TOTAL FIXTURE LUMENS (LM)	DLC	LPW	OPTIONS	MTO*	BUG RATING
63726	AREAFLD4AS290UNVD850T2BL	240/270/290	120-277V	0-10V	>80	5000K	Type II	37,200/41,850/43,000	5.1 Prm	155		✓	B5U0G3
63727	AREAFLD4AS290UNVD850T3BL	240/270/290	120-277V	0-10V	>80	5000K	Type III	37,200/41,850/43,000	5.1 Prm	155		✓	B5U0G3
63746	AREAFLD4AS290UNVD850T4BL	240/270/290	120-277V	0-10V	>80	5000K	Type IV	37,200/41,850/43,000	5.1 Prm	155		✓	B5U0G3
63747	AREAFLD4AS290UNVD850T5BL	240/270/290	120-277V	0-10V	>80	5000K	Type V	37,200/41,850/43,000	5.1 Prm	155		✓	B5U0G3
64003	AREAFLD4AS290UNVD830T2WH	240/270/290	120-277V	0-10V	>80	3000K	Type II	37,200/41,850/43,000	5.1 Prm	155		✓	B5U0G3
64004	AREAFLD4AS290UNVD830T3WH	240/270/290	120-277V	0-10V	>80	3000K	Type III	37,200/41,850/43,000	5.1 Prm	155		✓	B5U0G3
64005	AREAFLD4AS290UNVD830T4WH	240/270/290	120-277V	0-10V	>80	3000K	Type IV	37,200/41,850/43,000	5.1 Prm	155		✓	B5U0G3
64006	AREAFLD4AS290UNVD830T5WH	240/270/290	120-277V	0-10V	>80	3000K	Type V	37,200/41,850/43,000	5.1 Prm	155		✓	B5U0G3
63667	AREAFLD4AS290UNVD840T2WH	240/270/290	120-277V	0-10V	>80	4000K	Type II	37,200/41,850/43,000	5.1 Prm	155		✓	B5U0G3
63668	AREAFLD4AS290UNVD840T3WH	240/270/290	120-277V	0-10V	>80	4000K	Type III	37,200/41,850/43,000	5.1 Prm	155		✓	B5U0G3
63669	AREAFLD4AS290UNVD840T4WH	240/270/290	120-277V	0-10V	>80	4000K	Type IV	37,200/41,850/43,000	5.1 Prm	155		✓	B5U0G3
63670	AREAFLD4AS290UNVD840T5WH	240/270/290	120-277V	0-10V	>80	4000K	Type V	37,200/41,850/43,000	5.1 Prm	155		✓	B5U0G3
63618	AREAFLD4AS290UNVD850T2WH	240/270/290	120-277V	0-10V	>80	5000K	Type II	37,200/41,850/43,000	5.1 Prm	155		✓	B5U0G3
63619	AREAFLD4AS290UNVD850T3WH	240/270/290	120-277V	0-10V	>80	5000K	Type III	37,200/41,850/43,000	5.1 Prm	155		✓	B5U0G3
63620	AREAFLD4AS290UNVD850T4WH	240/270/290	120-277V	0-10V	>80	5000K	Type IV	37,200/41,850/43,000	5.1 Prm	155		✓	B5U0G3
63621	AREAFLD4AS290UNVD850T5WH	240/270/290	120-277V	0-10V	>80	5000K	Type V	37,200/41,850/43,000	5.1 Prm	155		✓	B5U0G3
63235	AREAFLD4AS100HUV830FRBZ	50/70/100	277-480V	0-10V	>80	3000K	Front Row	7750/10,850/15,900	5.1 Prm	155		✓	B4U0G2
63238	AREAFLD4AS100HUV830T2BZ	50/70/100	277-480V	0-10V	>80	3000K	Type II	7750/10,850/15,900	5.1 Prm	155		✓	B4U0G2
63239	AREAFLD4AS100HUV830T3BZ	50/70/100	277-480V	0-10V	>80	3000K	Type III	7750/10,850/15,900	5.1 Prm	155		✓	B4U0G2
63232	AREAFLD4AS100HUV830T4BZ	50/70/100	277-480V	0-10V	>80	3000K	Type IV	7750/10,850/15,900	5.1 Prm	155		✓	B4U0G2
63240	AREAFLD4AS100HUV830T5BZ	50/70/100	277-480V	0-10V	>80	3000K	Type V	7750/10,850/15,900	5.1 Prm	155		✓	B4U0G2
63236	AREAFLD4AS100HUV840FRBZ	50/70/100	277-480V	0-10V	>80	4000K	Front Row	7750/10,850/15,900	5.1 Prm	155		✓	B4U0G2
63241	AREAFLD4AS100HUV840T2BZ	50/70/100	277-480V	0-10V	>80	4000K	Type II	7750/10,850/15,900	5.1 Prm	155		✓	B4U0G2
63242	AREAFLD4AS100HUV840T3BZ	50/70/100	277-480V	0-10V	>80	4000K	Type III	7750/10,850/15,900	5.1 Prm	155		✓	B4U0G2
63233	AREAFLD4AS100HUV840T4BZ	50/70/100	277-480V	0-10V	>80	4000K	Type IV	7750/10,850/15,900	5.1 Prm	155		–	B4U0G2
63243	AREAFLD4AS100HUV840T5BZ	50/70/100	277-480V	0-10V	>80	4000K	Type V	7750/10,850/15,900	5.1 Prm	155		✓	B4U0G2
63237	AREAFLD4AS100HUV850FRBZ	50/70/100	277-480V	0-10V	>80	5000K	Front Row	7750/10,850/15,900	5.1 Prm	155		✓	B4U0G2
63244	AREAFLD4AS100HUV850T2BZ	50/70/100	277-480V	0-10V	>80	5000K	Type II	7750/10,850/15,900	5.1 Prm	155		✓	B4U0G2
63245	AREAFLD4AS100HUV850T3BZ	50/70/100	277-480V	0-10V	>80	5000K	Type III	7750/10,850/15,900	5.1 Prm	155		✓	B4U0G2
63234	AREAFLD4AS100HUV850T4BZ	50/70/100	277-480V	0-10V	>80	5000K	Type IV	7750/10,850/15,900	5.1 Prm	155		–	B4U0G2
63246	AREAFLD4AS100HUV850T5BZ	50/70/100	277-480V	0-10V	>80	5000K	Type V	7750/10,850/15,900	5.1 Prm	155		✓	B4U0G2
63780	AREAFLD4AS100HUV830FRBL	50/70/100	277-480V	0-10V	>80	3000K	Front Row	7750/10,850/15,900	5.1 Prm	155		✓	B4U0G2
63781	AREAFLD4AS100HUV830T2BL	50/70/100	277-480V	0-10V	>80	3000K	Type II	7750/10,850/15,900	5.1 Prm	155		✓	B4U0G2
63782	AREAFLD4AS100HUV830T3BL	50/70/100	277-480V	0-10V	>80	3000K	Type III	7750/10,850/15,900	5.1 Prm	155		✓	B4U0G2
63783	AREAFLD4AS100HUV830T4BL	50/70/100	277-480V	0-10V	>80	3000K	Type IV	7750/10,850/15,900	5.1 Prm	155		✓	B4U0G2

ORDERING INFORMATION (CONTINUED)

ITEM #	ORDERING ABBREVIATION	POWER (W)	INPUT VOLTAGE (V)	DIMMING	CRI	COLOR TEMP	DISTRIBUTION	TOTAL FIXTURE LUMENS (LM)	DLC	LPW	OPTIONS	MTO*	BUG RATING
63784	AREAFLD4AS100HUV830T5BL	50/70/100	277-480V	0-10V	>80	3000K	Type V	7750/10,850/15,900	5.1 Prm	155		✓	B4UOG2
63775	AREAFLD4AS100HUV840FRBL	50/70/100	277-480V	0-10V	>80	4000K	Front Row	7750/10,850/15,900	5.1 Prm	155		✓	B4UOG2
63776	AREAFLD4AS100HUV840T2BL	50/70/100	277-480V	0-10V	>80	4000K	Type II	7750/10,850/15,900	5.1 Prm	155		✓	B4UOG2
63777	AREAFLD4AS100HUV840T3BL	50/70/100	277-480V	0-10V	>80	4000K	Type III	7750/10,850/15,900	5.1 Prm	155		✓	B4UOG2
63778	AREAFLD4AS100HUV840T4BL	50/70/100	277-480V	0-10V	>80	4000K	Type IV	7750/10,850/15,900	5.1 Prm	155		✓	B4UOG2
63779	AREAFLD4AS100HUV840T5BL	50/70/100	277-480V	0-10V	>80	4000K	Type V	7750/10,850/15,900	5.1 Prm	155		✓	B4UOG2
63770	AREAFLD4AS100HUV850FRBL	50/70/100	277-480V	0-10V	>80	5000K	Front Row	7750/10,850/15,900	5.1 Prm	155		✓	B4UOG2
63771	AREAFLD4AS100HUV850T2BL	50/70/100	277-480V	0-10V	>80	5000K	Type II	7750/10,850/15,900	5.1 Prm	155		✓	B4UOG2
63772	AREAFLD4AS100HUV850T3BL	50/70/100	277-480V	0-10V	>80	5000K	Type III	7750/10,850/15,900	5.1 Prm	155		✓	B4UOG2
63773	AREAFLD4AS100HUV850T4BL	50/70/100	277-480V	0-10V	>80	5000K	Type IV	7750/10,850/15,900	5.1 Prm	155		✓	B4UOG2
63774	AREAFLD4AS100HUV850T5BL	50/70/100	277-480V	0-10V	>80	5000K	Type V	7750/10,850/15,900	5.1 Prm	155		✓	B4UOG2
65824	AREAFLD4AS100HUV830T2WH	50/70/100	277-480V	0-10V	>80	3000K	Type II	7750/10,850/15,900	5.1 Prm	155		✓	B4UOG2
65825	AREAFLD4AS100HUV830T3WH	50/70/100	277-480V	0-10V	>80	3000K	Type III	7750/10,850/15,900	5.1 Prm	155		✓	B4UOG2
65826	AREAFLD4AS100HUV830T4WH	50/70/100	277-480V	0-10V	>80	3000K	Type IV	7750/10,850/15,900	5.1 Prm	155		✓	B4UOG2
65827	AREAFLD4AS100HUV830T5WH	50/70/100	277-480V	0-10V	>80	3000K	Type V	7750/10,850/15,900	5.1 Prm	155		✓	B4UOG2
65828	AREAFLD4AS100HUV840T2WH	50/70/100	277-480V	0-10V	>80	4000K	Type II	7750/10,850/15,900	5.1 Prm	155		✓	B4UOG2
65829	AREAFLD4AS100HUV840T3WH	50/70/100	277-480V	0-10V	>80	4000K	Type III	7750/10,850/15,900	5.1 Prm	155		✓	B4UOG2
65830	AREAFLD4AS100HUV840T4WH	50/70/100	277-480V	0-10V	>80	4000K	Type IV	7750/10,850/15,900	5.1 Prm	155		✓	B4UOG2
65831	AREAFLD4AS100HUV840T5WH	50/70/100	277-480V	0-10V	>80	4000K	Type V	7750/10,850/15,900	5.1 Prm	155		✓	B4UOG2
65832	AREAFLD4AS100HUV850T2WH	50/70/100	277-480V	0-10V	>80	5000K	Type II	7750/10,850/15,900	5.1 Prm	155		✓	B4UOG2
65833	AREAFLD4AS100HUV850T3WH	50/70/100	277-480V	0-10V	>80	5000K	Type III	7750/10,850/15,900	5.1 Prm	155		✓	B4UOG2
65834	AREAFLD4AS100HUV850T4WH	50/70/100	277-480V	0-10V	>80	5000K	Type IV	7750/10,850/15,900	5.1 Prm	155		✓	B4UOG2
65835	AREAFLD4AS100HUV850T5WH	50/70/100	277-480V	0-10V	>80	5000K	Type V	7750/10,850/15,900	5.1 Prm	155		✓	B4UOG2
62935	AREAFLD4AS190HUV830T2BZ	120/150/190	277-480V	0-10V	>80	3000K	Type II	19,200/24,000/30,300	5.1 Prm	160		✓	B4UOG2
62936	AREAFLD4AS190HUV830T3BZ	120/150/190	277-480V	0-10V	>80	3000K	Type III	19,200/24,000/30,300	5.1 Prm	160		✓	B4UOG2
62937	AREAFLD4AS190HUV830T4BZ	120/150/190	277-480V	0-10V	>80	3000K	Type IV	19,200/24,000/30,300	5.1 Prm	160		✓	B4UOG2
62938	AREAFLD4AS190HUV830T5BZ	120/150/190	277-480V	0-10V	>80	3000K	Type V	19,200/24,000/30,300	5.1 Prm	160		✓	B4UOG2
62939	AREAFLD4AS190HUV840T2BZ	120/150/190	277-480V	0-10V	>80	4000K	Type II	19,200/24,000/30,300	5.1 Prm	160		✓	B4UOG2
62940	AREAFLD4AS190HUV840T3BZ	120/150/190	277-480V	0-10V	>80	4000K	Type III	19,200/24,000/30,300	5.1 Prm	160		✓	B4UOG2
62941	AREAFLD4AS190HUV840T4BZ	120/150/190	277-480V	0-10V	>80	4000K	Type IV	19,200/24,000/30,300	5.1 Prm	160		-	B4UOG2
62942	AREAFLD4AS190HUV840T5BZ	120/150/190	277-480V	0-10V	>80	4000K	Type V	19,200/24,000/30,300	5.1 Prm	160		✓	B4UOG2
62943	AREAFLD4AS190HUV850T2BZ	120/150/190	277-480V	0-10V	>80	5000K	Type II	19,200/24,000/30,300	5.1 Prm	160		✓	B4UOG2
62944	AREAFLD4AS190HUV850T3BZ	120/150/190	277-480V	0-10V	>80	5000K	Type III	19,200/24,000/30,300	5.1 Prm	160		✓	B4UOG2
62945	AREAFLD4AS190HUV850T4BZ	120/150/190	277-480V	0-10V	>80	5000K	Type IV	19,200/24,000/30,300	5.1 Prm	160		-	B4UOG2
62946	AREAFLD4AS190HUV850T5BZ	120/150/190	277-480V	0-10V	>80	5000K	Type V	19,200/24,000/30,300	5.1 Prm	160		✓	B4UOG2

ORDERING INFORMATION (CONTINUED)

ITEM #	ORDERING ABBREVIATION	POWER (W)	INPUT VOLTAGE (V)	DIMMING	CRI	COLOR TEMP	DISTRIBUTION	TOTAL FIXTURE LUMENS (LM)	DLC	LPW	OPTIONS	MTO*	BUG RATING
63800	AREAFLD4AS190HUV830FRBL	120/150/190	277-480V	0-10V	>80	3000K	Front Row	19,200/24,000/30,300	5.1 Prm	160		✓	B4U0G2
63801	AREAFLD4AS190HUV830T2BL	120/150/190	277-480V	0-10V	>80	3000K	Type II	19,200/24,000/30,300	5.1 Prm	160		✓	B4U0G2
63802	AREAFLD4AS190HUV830T3BL	120/150/190	277-480V	0-10V	>80	3000K	Type III	19,200/24,000/30,300	5.1 Prm	160		✓	B4U0G2
63803	AREAFLD4AS190HUV830T4BL	120/150/190	277-480V	0-10V	>80	3000K	Type IV	19,200/24,000/30,300	5.1 Prm	160		✓	B4U0G2
63804	AREAFLD4AS190HUV830T5BL	120/150/190	277-480V	0-10V	>80	3000K	Type V	19,200/24,000/30,300	5.1 Prm	160		✓	B4U0G2
63795	AREAFLD4AS190HUV840FRBL	120/150/190	277-480V	0-10V	>80	4000K	Front Row	19,200/24,000/30,300	5.1 Prm	160		✓	B4U0G2
63796	AREAFLD4AS190HUV840T2BL	120/150/190	277-480V	0-10V	>80	4000K	Type II	19,200/24,000/30,300	5.1 Prm	160		✓	B4U0G2
63797	AREAFLD4AS190HUV840T3BL	120/150/190	277-480V	0-10V	>80	4000K	Type III	19,200/24,000/30,300	5.1 Prm	160		✓	B4U0G2
63798	AREAFLD4AS190HUV840T4BL	120/150/190	277-480V	0-10V	>80	4000K	Type IV	19,200/24,000/30,300	5.1 Prm	160		✓	B4U0G2
63799	AREAFLD4AS190HUV840T5BL	120/150/190	277-480V	0-10V	>80	4000K	Type V	19,200/24,000/30,300	5.1 Prm	160		✓	B4U0G2
63790	AREAFLD4AS190HUV850FRBL	120/150/190	277-480V	0-10V	>80	5000K	Front Row	19,200/24,000/30,300	5.1 Prm	160		✓	B4U0G2
63791	AREAFLD4AS190HUV850T2BL	120/150/190	277-480V	0-10V	>80	5000K	Type II	19,200/24,000/30,300	5.1 Prm	160		✓	B4U0G2
63792	AREAFLD4AS190HUV850T3BL	120/150/190	277-480V	0-10V	>80	5000K	Type III	19,200/24,000/30,300	5.1 Prm	160		✓	B4U0G2
63793	AREAFLD4AS190HUV850T4BL	120/150/190	277-480V	0-10V	>80	5000K	Type IV	19,200/24,000/30,300	5.1 Prm	160		✓	B4U0G2
63794	AREAFLD4AS190HUV850T5BL	120/150/190	277-480V	0-10V	>80	5000K	Type V	19,200/24,000/30,300	5.1 Prm	160		✓	B4U0G2
63995	AREAFLD4AS190HUV830T2WH	120/150/190	277-480V	0-10V	>80	3000K	Type II	19,200/24,000/30,300	5.1 Prm	160		✓	B4U0G2
63996	AREAFLD4AS190HUV830T3WH	120/150/190	277-480V	0-10V	>80	3000K	Type III	19,200/24,000/30,300	5.1 Prm	160		✓	B4U0G2
63997	AREAFLD4AS190HUV830T4WH	120/150/190	277-480V	0-10V	>80	3000K	Type IV	19,200/24,000/30,300	5.1 Prm	160		✓	B4U0G2
63998	AREAFLD4AS190HUV830T5WH	120/150/190	277-480V	0-10V	>80	3000K	Type V	19,200/24,000/30,300	5.1 Prm	160		✓	B4U0G2
63999	AREAFLD4AS190HUV840T2WH	120/150/190	277-480V	0-10V	>80	4000K	Type II	19,200/24,000/30,300	5.1 Prm	160		✓	B4U0G2
64000	AREAFLD4AS190HUV840T3WH	120/150/190	277-480V	0-10V	>80	4000K	Type III	19,200/24,000/30,300	5.1 Prm	160		✓	B4U0G2
64001	AREAFLD4AS190HUV840T4WH	120/150/190	277-480V	0-10V	>80	4000K	Type IV	19,200/24,000/30,300	5.1 Prm	160		✓	B4U0G2
64002	AREAFLD4AS190HUV840T5WH	120/150/190	277-480V	0-10V	>80	4000K	Type V	19,200/24,000/30,300	5.1 Prm	160		✓	B4U0G2
63605	AREAFLD4AS190HUV850T2WH	120/150/190	277-480V	0-10V	>80	5000K	Type II	19,200/24,000/30,300	5.1 Prm	160		✓	B4U0G2
63606	AREAFLD4AS190HUV850T3WH	120/150/190	277-480V	0-10V	>80	5000K	Type III	19,200/24,000/30,300	5.1 Prm	160		✓	B4U0G2
63607	AREAFLD4AS190HUV850T4WH	120/150/190	277-480V	0-10V	>80	5000K	Type IV	19,200/24,000/30,300	5.1 Prm	160		✓	B4U0G2
63608	AREAFLD4AS190HUV850T5WH	120/150/190	277-480V	0-10V	>80	5000K	Type V	19,200/24,000/30,300	5.1 Prm	160		✓	B4U0G2
62947	AREAFLD4AS290HUV830T2BZ	240/270/290	277-480V	0-10V	>80	3000K	Type II	37,200/41,850/43,800	5.1 Prm	155		✓	B5U0G3
62948	AREAFLD4AS290HUV830T3BZ	240/270/290	277-480V	0-10V	>80	3000K	Type III	37,200/41,850/43,800	5.1 Prm	155		✓	B5U0G3
62949	AREAFLD4AS290HUV830T4BZ	240/270/290	277-480V	0-10V	>80	3000K	Type IV	37,200/41,850/43,800	5.1 Prm	155		✓	B5U0G3
62950	AREAFLD4AS290HUV830T5BZ	240/270/290	277-480V	0-10V	>80	3000K	Type V	37,200/41,850/43,800	5.1 Prm	155		✓	B5U0G3
62951	AREAFLD4AS290HUV840T2BZ	240/270/290	277-480V	0-10V	>80	4000K	Type II	37,200/41,850/43,800	5.1 Prm	155		✓	B5U0G3
62952	AREAFLD4AS290HUV840T3BZ	240/270/290	277-480V	0-10V	>80	4000K	Type III	37,200/41,850/43,800	5.1 Prm	155		✓	B5U0G3
62953	AREAFLD4AS290HUV840T4BZ	240/270/290	277-480V	0-10V	>80	4000K	Type IV	37,200/41,850/43,800	5.1 Prm	155		-	B5U0G3
62954	AREAFLD4AS290HUV840T5BZ	240/270/290	277-480V	0-10V	>80	4000K	Type V	37,200/41,850/43,800	5.1 Prm	155		✓	B5U0G3

ORDERING INFORMATION (CONTINUED)

ITEM #	ORDERING ABBREVIATION	POWER (W)	INPUT VOLTAGE (V)	DIMMING	CRI	COLOR TEMP	DISTRIBUTION	TOTAL FIXTURE LUMENS (LM)	DLC	LPW	OPTIONS	MTO*	BUG RATING
62955	AREAFLD4AS290HUV850T2BZ	240/270/290	277-480V	0-10V	>80	5000K	Type II	37,200/41,850/43,800	5.1 Prm	155		✓	B5U0G3
62956	AREAFLD4AS290HUV850T3BZ	240/270/290	277-480V	0-10V	>80	5000K	Type III	37,200/41,850/43,800	5.1 Prm	155		✓	B5U0G3
62957	AREAFLD4AS290HUV850T4BZ	240/270/290	277-480V	0-10V	>80	5000K	Type IV	37,200/41,850/43,800	5.1 Prm	155		-	B5U0G3
62958	AREAFLD4AS290HUV850T5BZ	240/270/290	277-480V	0-10V	>80	5000K	Type V	37,200/41,850/43,800	5.1 Prm	155		✓	B5U0G3
63823	AREAFLD4AS290HUV830T2BL	240/270/290	277-480V	0-10V	>80	3000K	Type II	37,200/41,850/43,800	5.1 Prm	155		✓	B5U0G3
63824	AREAFLD4AS290HUV830T3BL	240/270/290	277-480V	0-10V	>80	3000K	Type III	37,200/41,850/43,800	5.1 Prm	155		✓	B5U0G3
63825	AREAFLD4AS290HUV830T4BL	240/270/290	277-480V	0-10V	>80	3000K	Type IV	37,200/41,850/43,800	5.1 Prm	155		✓	B5U0G3
63826	AREAFLD4AS290HUV830T5BL	240/270/290	277-480V	0-10V	>80	3000K	Type V	37,200/41,850/43,800	5.1 Prm	155		✓	B5U0G3
63819	AREAFLD4AS290HUV840T2BL	240/270/290	277-480V	0-10V	>80	4000K	Type II	37,200/41,850/43,800	5.1 Prm	155		✓	B5U0G3
63820	AREAFLD4AS290HUV840T3BL	240/270/290	277-480V	0-10V	>80	4000K	Type III	37,200/41,850/43,800	5.1 Prm	155		✓	B5U0G3
63821	AREAFLD4AS290HUV840T4BL	240/270/290	277-480V	0-10V	>80	4000K	Type IV	37,200/41,850/43,800	5.1 Prm	155		✓	B5U0G3
63822	AREAFLD4AS290HUV840T5BL	240/270/290	277-480V	0-10V	>80	4000K	Type V	37,200/41,850/43,800	5.1 Prm	155		✓	B5U0G3
63722	AREAFLD4AS290HUV850T2BL	240/270/290	277-480V	0-10V	>80	5000K	Type II	37,200/41,850/43,800	5.1 Prm	155		✓	B5U0G3
63723	AREAFLD4AS290HUV850T3BL	240/270/290	277-480V	0-10V	>80	5000K	Type III	37,200/41,850/43,800	5.1 Prm	155		✓	B5U0G3
63724	AREAFLD4AS290HUV850T4BL	240/270/290	277-480V	0-10V	>80	5000K	Type IV	37,200/41,850/43,800	5.1 Prm	155		✓	B5U0G3
63725	AREAFLD4AS290HUV850T5BL	240/270/290	277-480V	0-10V	>80	5000K	Type V	37,200/41,850/43,800	5.1 Prm	155		✓	B5U0G3
63987	AREAFLD4AS290HUV830T2WH	240/270/290	277-480V	0-10V	>80	3000K	Type II	37,200/41,850/43,800	5.1 Prm	155		✓	B5U0G3
63988	AREAFLD4AS290HUV830T3WH	240/270/290	277-480V	0-10V	>80	3000K	Type III	37,200/41,850/43,800	5.1 Prm	155		✓	B5U0G3
63989	AREAFLD4AS290HUV830T4WH	240/270/290	277-480V	0-10V	>80	3000K	Type IV	37,200/41,850/43,800	5.1 Prm	155		✓	B5U0G3
63990	AREAFLD4AS290HUV830T5WH	240/270/290	277-480V	0-10V	>80	3000K	Type V	37,200/41,850/43,800	5.1 Prm	155		✓	B5U0G3
63991	AREAFLD4AS290HUV840T2WH	240/270/290	277-480V	0-10V	>80	4000K	Type II	37,200/41,850/43,800	5.1 Prm	155		✓	B5U0G3
63992	AREAFLD4AS290HUV840T3WH	240/270/290	277-480V	0-10V	>80	4000K	Type III	37,200/41,850/43,800	5.1 Prm	155		✓	B5U0G3
63993	AREAFLD4AS290HUV840T4WH	240/270/290	277-480V	0-10V	>80	4000K	Type IV	37,200/41,850/43,800	5.1 Prm	155		✓	B5U0G3
63994	AREAFLD4AS290HUV840T5WH	240/270/290	277-480V	0-10V	>80	4000K	Type V	37,200/41,850/43,800	5.1 Prm	155		✓	B5U0G3
63609	AREAFLD4AS290HUV850T2WH	240/270/290	277-480V	0-10V	>80	5000K	Type II	37,200/41,850/43,800	5.1 Prm	155		✓	B5U0G3
63610	AREAFLD4AS290HUV850T3WH	240/270/290	277-480V	0-10V	>80	5000K	Type III	37,200/41,850/43,800	5.1 Prm	155		✓	B5U0G3
63611	AREAFLD4AS290HUV850T4WH	240/270/290	277-480V	0-10V	>80	5000K	Type IV	37,200/41,850/43,800	5.1 Prm	155		✓	B5U0G3
63612	AREAFLD4AS290HUV850T5WH	240/270/290	277-480V	0-10V	>80	5000K	Type V	37,200/41,850/43,800	5.1 Prm	155		✓	B5U0G3
63004	AREAFLD4AS100UNVD830FRBZBLE	50/70/100	120-277V	0-10V	>80	3000K	Front Row	7750/10,850/14,700	5.1 Prm	155	Bluetooth Zhaga Sensor	✓	B4U0G2
62964	AREAFLD4AS100UNVD830T2BZBLE	50/70/100	120-277V	0-10V	>80	3000K	Type II	7750/10,850/14,700	5.1 Prm	155	Bluetooth Zhaga Sensor	✓	B4U0G2
62965	AREAFLD4AS100UNVD830T3BZBLE	50/70/100	120-277V	0-10V	>80	3000K	Type III	7750/10,850/14,700	5.1 Prm	155	Bluetooth Zhaga Sensor	✓	B4U0G2
62966	AREAFLD4AS100UNVD830T4BZBLE	50/70/100	120-277V	0-10V	>80	3000K	Type IV	7750/10,850/14,700	5.1 Prm	155	Bluetooth Zhaga Sensor	✓	B4U0G2
62967	AREAFLD4AS100UNVD830T5BZBLE	50/70/100	120-277V	0-10V	>80	3000K	Type V	7750/10,850/14,700	5.1 Prm	155	Bluetooth Zhaga Sensor	✓	B4U0G2
63005	AREAFLD4AS100UNVD840FRBZBLE	50/70/100	120-277V	0-10V	>80	4000K	Front Row	7750/10,850/14,700	5.1 Prm	155	Bluetooth Zhaga Sensor	✓	B4U0G2
62968	AREAFLD4AS100UNVD840T2BZBLE	50/70/100	120-277V	0-10V	>80	4000K	Type II	7750/10,850/14,700	5.1 Prm	155	Bluetooth Zhaga Sensor	✓	B4U0G2

ORDERING INFORMATION (CONTINUED)

ITEM #	ORDERING ABBREVIATION	POWER (W)	INPUT VOLTAGE (V)	DIMMING	CRI	COLOR TEMP	DISTRIBUTION	TOTAL FIXTURE LUMENS (LM)	DLC	LPW	OPTIONS	MTO*	BUG RATING
62969	AREAFLD4AS100UNVD840T3BZBLE	50/70/100	120-277V	0-10V	>80	4000K	Type III	7750/10,850/14,700	5.1 Prm	155	Bluetooth Zhaga Sensor	✓	B4U0G2
62970	AREAFLD4AS100UNVD840T4BZBLE	50/70/100	120-277V	0-10V	>80	4000K	Type IV	7750/10,850/14,700	5.1 Prm	155	Bluetooth Zhaga Sensor	✓	B4U0G2
62971	AREAFLD4AS100UNVD840T5BZBLE	50/70/100	120-277V	0-10V	>80	4000K	Type V	7750/10,850/14,700	5.1 Prm	155	Bluetooth Zhaga Sensor	✓	B4U0G2
63006	AREAFLD4AS100UNVD850FRBZBLE	50/70/100	120-277V	0-10V	>80	5000K	Front Row	7750/10,850/14,700	5.1 Prm	155	Bluetooth Zhaga Sensor	✓	B4U0G2
62972	AREAFLD4AS100UNVD850T2BZBLE	50/70/100	120-277V	0-10V	>80	5000K	Type II	7750/10,850/14,700	5.1 Prm	155	Bluetooth Zhaga Sensor	✓	B4U0G2
62973	AREAFLD4AS100UNVD850T3BZBLE	50/70/100	120-277V	0-10V	>80	5000K	Type III	7750/10,850/14,700	5.1 Prm	155	Bluetooth Zhaga Sensor	✓	B4U0G2
62974	AREAFLD4AS100UNVD850T4BZBLE	50/70/100	120-277V	0-10V	>80	5000K	Type IV	7750/10,850/14,700	5.1 Prm	155	Bluetooth Zhaga Sensor	✓	B4U0G2
62975	AREAFLD4AS100UNVD850T5BZBLE	50/70/100	120-277V	0-10V	>80	5000K	Type V	7750/10,850/14,700	5.1 Prm	155	Bluetooth Zhaga Sensor	✓	B4U0G2
62976	AREAFLD4AS190UNVD830T2BZBLE	120/150/190	120-277V	0-10V	>80	3000K	Type II	18,000/22,500/28,500	5.1 Prm	150	Bluetooth Zhaga Sensor	✓	B4U0G2
62977	AREAFLD4AS190UNVD830T3BZBLE	120/150/190	120-277V	0-10V	>80	3000K	Type III	18,000/22,500/28,500	5.1 Prm	150	Bluetooth Zhaga Sensor	✓	B4U0G2
62978	AREAFLD4AS190UNVD830T4BZBLE	120/150/190	120-277V	0-10V	>80	3000K	Type IV	18,000/22,500/28,500	5.1 Prm	150	Bluetooth Zhaga Sensor	✓	B4U0G2
62979	AREAFLD4AS190UNVD830T5BZBLE	120/150/190	120-277V	0-10V	>80	3000K	Type V	18,000/22,500/28,500	5.1 Prm	150	Bluetooth Zhaga Sensor	✓	B4U0G2
62980	AREAFLD4AS190UNVD840T2BZBLE	120/150/190	120-277V	0-10V	>80	4000K	Type II	18,000/22,500/28,500	5.1 Prm	150	Bluetooth Zhaga Sensor	✓	B4U0G2
62981	AREAFLD4AS190UNVD840T3BZBLE	120/150/190	120-277V	0-10V	>80	4000K	Type III	18,000/22,500/28,500	5.1 Prm	150	Bluetooth Zhaga Sensor	✓	B4U0G2
62982	AREAFLD4AS190UNVD840T4BZBLE	120/150/190	120-277V	0-10V	>80	4000K	Type IV	18,000/22,500/28,500	5.1 Prm	150	Bluetooth Zhaga Sensor	✓	B4U0G2
62983	AREAFLD4AS190UNVD840T5BZBLE	120/150/190	120-277V	0-10V	>80	4000K	Type V	18,000/22,500/28,500	5.1 Prm	150	Bluetooth Zhaga Sensor	✓	B4U0G2
62984	AREAFLD4AS190UNVD850T2BZBLE	120/150/190	120-277V	0-10V	>80	5000K	Type II	18,000/22,500/28,500	5.1 Prm	150	Bluetooth Zhaga Sensor	✓	B4U0G2
62985	AREAFLD4AS190UNVD850T3BZBLE	120/150/190	120-277V	0-10V	>80	5000K	Type III	18,000/22,500/28,500	5.1 Prm	150	Bluetooth Zhaga Sensor	✓	B4U0G2
62986	AREAFLD4AS190UNVD850T4BZBLE	120/150/190	120-277V	0-10V	>80	5000K	Type IV	18,000/22,500/28,500	5.1 Prm	150	Bluetooth Zhaga Sensor	✓	B4U0G2
62987	AREAFLD4AS190UNVD850T5BZBLE	120/150/190	120-277V	0-10V	>80	5000K	Type V	18,000/22,500/28,500	5.1 Prm	150	Bluetooth Zhaga Sensor	✓	B4U0G2
63904	AREAFLD4AS190UNVD840T4BLBLE	120/150/190	120-277V	0-10V	>80	4000K	Type IV	18,000/22,500/28,500	5.1 Prm	150	Bluetooth Zhaga Sensor	✓	B4U0G2
62988	AREAFLD4AS290UNVD830T2BZBLE	240/270/290	120-277V	0-10V	>80	3000K	Type II	37,200/41,850/43,000	5.1 Prm	155	Bluetooth Zhaga Sensor	✓	B5U0G3
62989	AREAFLD4AS290UNVD830T3BZBLE	240/270/290	120-277V	0-10V	>80	3000K	Type III	37,200/41,850/43,000	5.1 Prm	155	Bluetooth Zhaga Sensor	✓	B5U0G3
62990	AREAFLD4AS290UNVD830T4BZBLE	240/270/290	120-277V	0-10V	>80	3000K	Type IV	37,200/41,850/43,000	5.1 Prm	155	Bluetooth Zhaga Sensor	✓	B5U0G3
62991	AREAFLD4AS290UNVD830T5BZBLE	240/270/290	120-277V	0-10V	>80	3000K	Type V	37,200/41,850/43,000	5.1 Prm	155	Bluetooth Zhaga Sensor	✓	B5U0G3
62992	AREAFLD4AS290UNVD840T2BZBLE	240/270/290	120-277V	0-10V	>80	4000K	Type II	37,200/41,850/43,000	5.1 Prm	155	Bluetooth Zhaga Sensor	✓	B5U0G3
62993	AREAFLD4AS290UNVD840T3BZBLE	240/270/290	120-277V	0-10V	>80	4000K	Type III	37,200/41,850/43,000	5.1 Prm	155	Bluetooth Zhaga Sensor	✓	B5U0G3
62994	AREAFLD4AS290UNVD840T4BZBLE	240/270/290	120-277V	0-10V	>80	4000K	Type IV	37,200/41,850/43,000	5.1 Prm	155	Bluetooth Zhaga Sensor	✓	B5U0G3
62995	AREAFLD4AS290UNVD840T5BZBLE	240/270/290	120-277V	0-10V	>80	4000K	Type V	37,200/41,850/43,000	5.1 Prm	155	Bluetooth Zhaga Sensor	✓	B5U0G3
62996	AREAFLD4AS290UNVD850T2BZBLE	240/270/290	120-277V	0-10V	>80	5000K	Type II	37,200/41,850/43,000	5.1 Prm	155	Bluetooth Zhaga Sensor	✓	B5U0G3
62997	AREAFLD4AS290UNVD850T3BZBLE	240/270/290	120-277V	0-10V	>80	5000K	Type III	37,200/41,850/43,000	5.1 Prm	155	Bluetooth Zhaga Sensor	✓	B5U0G3
62998	AREAFLD4AS290UNVD850T4BZBLE	240/270/290	120-277V	0-10V	>80	5000K	Type IV	37,200/41,850/43,000	5.1 Prm	155	Bluetooth Zhaga Sensor	✓	B5U0G3
62999	AREAFLD4AS290UNVD850T5BZBLE	240/270/290	120-277V	0-10V	>80	5000K	Type V	37,200/41,850/43,000	5.1 Prm	155	Bluetooth Zhaga Sensor	✓	B5U0G3
63283	AREAFLD4AS100HUV830FRBZBLE	50/70/100	277-480V	0-10V	>80	3000K	Front Row	7750/10,850/15,900	5.1 Prm	155	Bluetooth Zhaga Sensor	✓	B4U0G2
63271	AREAFLD4AS100HUV830T2BZBLE	50/70/100	277-480V	0-10V	>80	3000K	Type II	7750/10,850/15,900	5.1 Prm	155	Bluetooth Zhaga Sensor	✓	B4U0G2

ORDERING INFORMATION (CONTINUED)

ITEM #	ORDERING ABBREVIATION	POWER (W)	INPUT VOLTAGE (V)	DIMMING	CRI	COLOR TEMP	DISTRIBUTION	TOTAL FIXTURE LUMENS (LM)	DLC	LPW	OPTIONS	MTO*	BUG RATING
63272	AREAFLD4AS100HUV830T3BZBLE	50/70/100	277-480V	0-10V	>80	3000K	Type III	7750/10,850/15,900	5.1 Prm	155	Bluetooth Zhaga Sensor	✓	B4U0G2
63273	AREAFLD4AS100HUV830T4BZBLE	50/70/100	277-480V	0-10V	>80	3000K	Type IV	7750/10,850/15,900	5.1 Prm	155	Bluetooth Zhaga Sensor	✓	B4U0G2
63274	AREAFLD4AS100HUV830T5BZBLE	50/70/100	277-480V	0-10V	>80	3000K	Type V	7750/10,850/15,900	5.1 Prm	155	Bluetooth Zhaga Sensor	✓	B4U0G2
63284	AREAFLD4AS100HUV840FRBZBLE	50/70/100	277-480V	0-10V	>80	4000K	Front Row	7750/10,850/15,900	5.1 Prm	155	Bluetooth Zhaga Sensor	✓	B4U0G2
63275	AREAFLD4AS100HUV840T2BZBLE	50/70/100	277-480V	0-10V	>80	4000K	Type II	7750/10,850/15,900	5.1 Prm	155	Bluetooth Zhaga Sensor	✓	B4U0G2
63276	AREAFLD4AS100HUV840T3BZBLE	50/70/100	277-480V	0-10V	>80	4000K	Type III	7750/10,850/15,900	5.1 Prm	155	Bluetooth Zhaga Sensor	✓	B4U0G2
63277	AREAFLD4AS100HUV840T4BZBLE	50/70/100	277-480V	0-10V	>80	4000K	Type IV	7750/10,850/15,900	5.1 Prm	155	Bluetooth Zhaga Sensor	✓	B4U0G2
63278	AREAFLD4AS100HUV840T5BZBLE	50/70/100	277-480V	0-10V	>80	4000K	Type V	7750/10,850/15,900	5.1 Prm	155	Bluetooth Zhaga Sensor	✓	B4U0G2
63285	AREAFLD4AS100HUV850FRBZBLE	50/70/100	277-480V	0-10V	>80	5000K	Front Row	7750/10,850/15,900	5.1 Prm	155	Bluetooth Zhaga Sensor	✓	B4U0G2
63279	AREAFLD4AS100HUV850T2BZBLE	50/70/100	277-480V	0-10V	>80	5000K	Type II	7750/10,850/15,900	5.1 Prm	155	Bluetooth Zhaga Sensor	✓	B4U0G2
63280	AREAFLD4AS100HUV850T3BZBLE	50/70/100	277-480V	0-10V	>80	5000K	Type III	7750/10,850/15,900	5.1 Prm	155	Bluetooth Zhaga Sensor	✓	B4U0G2
63281	AREAFLD4AS100HUV850T4BZBLE	50/70/100	277-480V	0-10V	>80	5000K	Type IV	7750/10,850/15,900	5.1 Prm	155	Bluetooth Zhaga Sensor	✓	B4U0G2
63282	AREAFLD4AS100HUV850T5BZBLE	50/70/100	277-480V	0-10V	>80	5000K	Type V	7750/10,850/15,900	5.1 Prm	155	Bluetooth Zhaga Sensor	✓	B4U0G2
63007	AREAFLD4AS190HUV830T2BZBLE	120/150/190	277-480V	0-10V	>80	3000K	Type II	19,200/24,000/30,300	5.1 Prm	160	Bluetooth Zhaga Sensor	✓	B4U0G2
63008	AREAFLD4AS190HUV830T3BZBLE	120/150/190	277-480V	0-10V	>80	3000K	Type III	19,200/24,000/30,300	5.1 Prm	160	Bluetooth Zhaga Sensor	✓	B4U0G2
63009	AREAFLD4AS190HUV830T4BZBLE	120/150/190	277-480V	0-10V	>80	3000K	Type IV	19,200/24,000/30,300	5.1 Prm	160	Bluetooth Zhaga Sensor	✓	B4U0G2
63010	AREAFLD4AS190HUV830T5BZBLE	120/150/190	277-480V	0-10V	>80	3000K	Type V	19,200/24,000/30,300	5.1 Prm	160	Bluetooth Zhaga Sensor	✓	B4U0G2
63011	AREAFLD4AS190HUV840T2BZBLE	120/150/190	277-480V	0-10V	>80	4000K	Type II	19,200/24,000/30,300	5.1 Prm	160	Bluetooth Zhaga Sensor	✓	B4U0G2
63012	AREAFLD4AS190HUV840T3BZBLE	120/150/190	277-480V	0-10V	>80	4000K	Type III	19,200/24,000/30,300	5.1 Prm	160	Bluetooth Zhaga Sensor	✓	B4U0G2
63013	AREAFLD4AS190HUV840T4BZBLE	120/150/190	277-480V	0-10V	>80	4000K	Type IV	19,200/24,000/30,300	5.1 Prm	160	Bluetooth Zhaga Sensor	✓	B4U0G2
63014	AREAFLD4AS190HUV840T5BZBLE	120/150/190	277-480V	0-10V	>80	4000K	Type V	19,200/24,000/30,300	5.1 Prm	160	Bluetooth Zhaga Sensor	✓	B4U0G2
63015	AREAFLD4AS190HUV850T2BZBLE	120/150/190	277-480V	0-10V	>80	5000K	Type II	19,200/24,000/30,300	5.1 Prm	160	Bluetooth Zhaga Sensor	✓	B4U0G2
63016	AREAFLD4AS190HUV850T3BZBLE	120/150/190	277-480V	0-10V	>80	5000K	Type III	19,200/24,000/30,300	5.1 Prm	160	Bluetooth Zhaga Sensor	✓	B4U0G2
63017	AREAFLD4AS190HUV850T4BZBLE	120/150/190	277-480V	0-10V	>80	5000K	Type IV	19,200/24,000/30,300	5.1 Prm	160	Bluetooth Zhaga Sensor	✓	B4U0G2
63018	AREAFLD4AS190HUV850T5BZBLE	120/150/190	277-480V	0-10V	>80	5000K	Type V	19,200/24,000/30,300	5.1 Prm	160	Bluetooth Zhaga Sensor	✓	B4U0G2
63019	AREAFLD4AS290HUV830T2BZBLE	240/270/290	277-480V	0-10V	>80	3000K	Type II	37,200/41,850/43,800	5.1 Prm	155	Bluetooth Zhaga Sensor	✓	B5U0G3
63020	AREAFLD4AS290HUV830T3BZBLE	240/270/290	277-480V	0-10V	>80	3000K	Type III	37,200/41,850/43,800	5.1 Prm	155	Bluetooth Zhaga Sensor	✓	B5U0G3
63021	AREAFLD4AS290HUV830T4BZBLE	240/270/290	277-480V	0-10V	>80	3000K	Type IV	37,200/41,850/43,800	5.1 Prm	155	Bluetooth Zhaga Sensor	✓	B5U0G3
63022	AREAFLD4AS290HUV830T5BZBLE	240/270/290	277-480V	0-10V	>80	3000K	Type V	37,200/41,850/43,800	5.1 Prm	155	Bluetooth Zhaga Sensor	✓	B5U0G3
63023	AREAFLD4AS290HUV840T2BZBLE	240/270/290	277-480V	0-10V	>80	4000K	Type II	37,200/41,850/43,800	5.1 Prm	155	Bluetooth Zhaga Sensor	✓	B5U0G3
63024	AREAFLD4AS290HUV840T3BZBLE	240/270/290	277-480V	0-10V	>80	4000K	Type III	37,200/41,850/43,800	5.1 Prm	155	Bluetooth Zhaga Sensor	✓	B5U0G3
63025	AREAFLD4AS290HUV840T4BZBLE	240/270/290	277-480V	0-10V	>80	4000K	Type IV	37,200/41,850/43,800	5.1 Prm	155	Bluetooth Zhaga Sensor	✓	B5U0G3
63026	AREAFLD4AS290HUV840T5BZBLE	240/270/290	277-480V	0-10V	>80	4000K	Type V	37,200/41,850/43,800	5.1 Prm	155	Bluetooth Zhaga Sensor	✓	B5U0G3
63027	AREAFLD4AS290HUV850T2BZBLE	240/270/290	277-480V	0-10V	>80	5000K	Type II	37,200/41,850/43,800	5.1 Prm	155	Bluetooth Zhaga Sensor	✓	B5U0G3
63028	AREAFLD4AS290HUV850T3BZBLE	240/270/290	277-480V	0-10V	>80	5000K	Type III	37,200/41,850/43,800	5.1 Prm	155	Bluetooth Zhaga Sensor	✓	B5U0G3

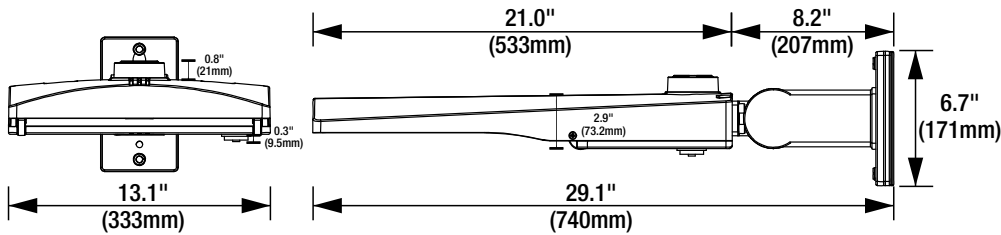
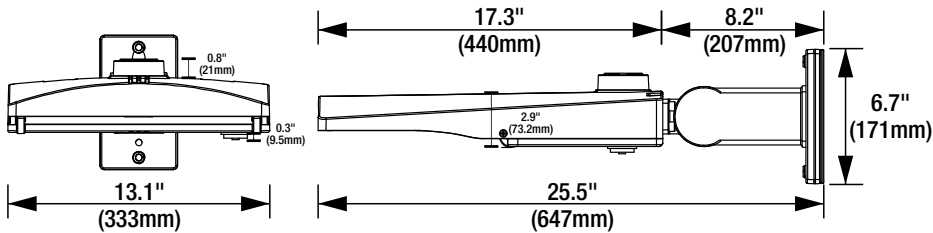
ORDERING INFORMATION (CONTINUED)

ITEM #	ORDERING ABBREVIATION	POWER (W)	INPUT VOLTAGE (V)	DIMMING	CRI	COLOR TEMP	DISTRIBUTION	TOTAL FIXTURE LUMENS (LM)	DLC	LPW	OPTIONS	MTO*	BUG RATING
63029	AREAFLD4AS290HUV850T4BZBLE	240/270/290	277-480V	0-10V	>80	5000K	Type IV	37,200/41,850/43,800	5.1 Prm	155	Bluetooth Zhaga Sensor	✓	B5U0G3
63030	AREAFLD4AS290HUV850T5BZBLE	240/270/290	277-480V	0-10V	>80	5000K	Type V	37,200/41,850/43,800	5.1 Prm	155	Bluetooth Zhaga Sensor	✓	B5U0G3
65925	AREAFLD4AS100HUV840T4GR	50/70/100	277-480V	0-10V	>80	4000K	Type IV	7750/10850/14700	5.1 Prm	155		✓	B4U0G2
65926	AREAFLD4AS100HUV840T2GR	50/70/100	277-480V	0-10V	>80	4000K	Type II	7750/10850/14700	5.1 Prm	155		✓	B4U0G2
63885	AREAFLD4AS290HUV850T4GR	240/270/290	277-480V	0-10V	>80	5000K	Type IV	37,200/41,850/43,800	5.1 Prm	155		✓	B5U0G3
65837	AREAFLD4AS100UNVD830T4GR	50/70/100	120-277V	0-10V	>80	3000K	Type IV	7750/10,850/14,700	5.1 Prm	155		✓	B4U0G2

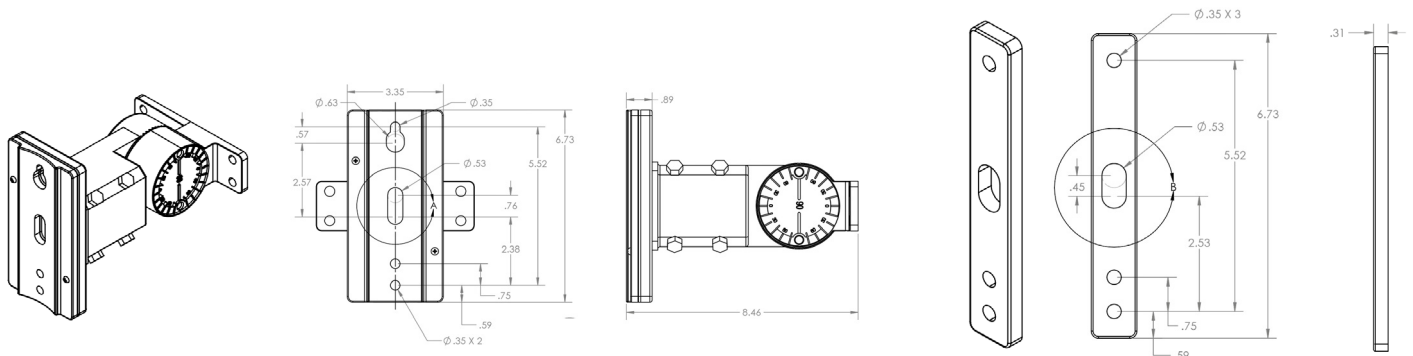
* Made to Order

PHYSICAL INFORMATION

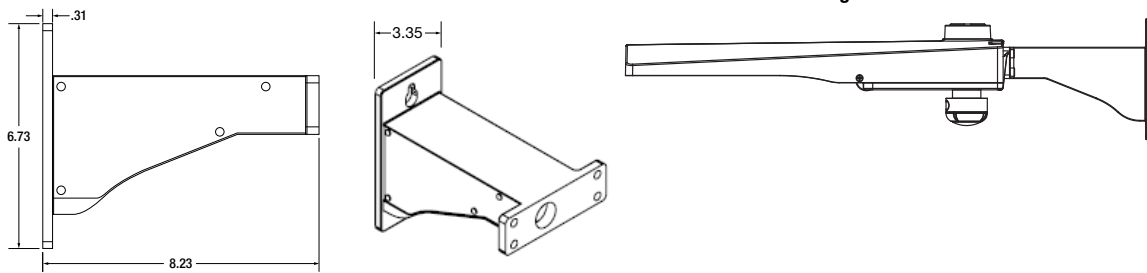
LUMINAIRE DESCRIPTION	LENGTH IN (MM)	WIDTH IN (MM)	HEIGHT IN (MM)	WEIGHT LB (KG)	EPA
100/190W	25 (647)	13.1 (333)	6.7 (171)	17.6 (8)	1.53 ft2
290W	29.1 (740)	13.1 (333)	6.7 (171)	20.6 (9.4)	1.81 ft2



Universal Mounting Bracket



Fixed Mounting Bracket

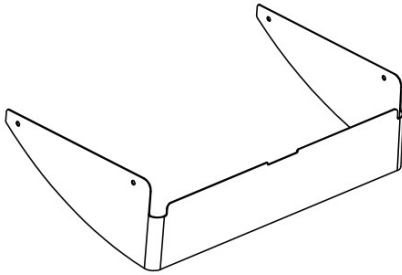


The Universal Mounting Bracket is included with all units and the Fixed Mounting Bracket is included with all 3000K units. Dimensions in inches

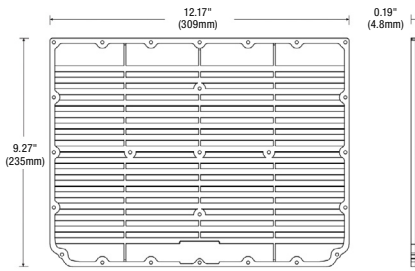
ACCESSORIES

ITEM #	ORDERING ABBREVIATION	ITEM DESCRIPTION
Photocells		
61393	AREAFLDXA/NEMAPHOTOCELL/UNV	NEMA locking photocell, 120-277V, 3-pin
61394	AREAFLDXA/NEMAPHOTOCELL/347	NEMA locking photocell, 347V, 3-pin
61395	AREAFLDXA/NEMAPHOTOCELL/480	NEMA locking photocell, 480V, 3-pin
63197	NEMASHORTINGCAP	NEMA Shorting cap
LEDVANCE LINK®		
63031	SENSOR1A/ODPIRZ10BLE/WH	Bluetooth Sensor, White Finish
63032	SENSOR1A/ODPIRZ10BLE/BZ	Bluetooth Sensor, Bronze Finish
63033	CONTROL1A/OD12VZ10BLE/WH	Bluetooth Controller, White Finish
Glare Shields		
63164	AREAFLD4A/SMALLSHIELD	Small Shield
63165	AREAFLD4A/LARGESHIELD	Large Shield
Bird Spike		
63166	AREAFLD4A/BIRDSPIKE	Bird Spike
Visors		
65432	AREAFLD4AALRGVISORBZ	Large Back Visor, Bronze
65433	AREAFLD4AALRGVISORBL	Large Back Visor, Black
65434	AREAFLD4AALRGVISORWH	Large Back Visor, White
65435	AREAFLD4AALRGVISORGR	Large Back Visor, Gray
65853	AREAFLD4ASMVISORBZ	Small Back Visor, Bronze
65854	AREAFLD4ASMVISORBL	Small Back Visor, Black
65855	AREAFLD4ASMVISORWH	Small Back Visor, White
65836	AREAFLD4ASMVISORGR	Small Back Visor, Gray

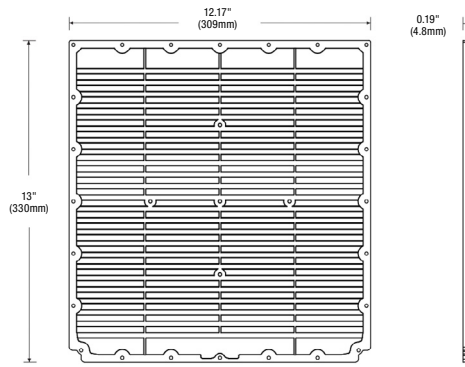
Back Visor



Small Shield

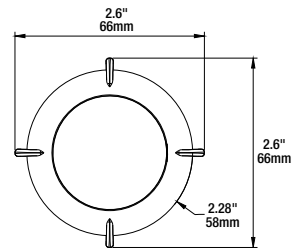
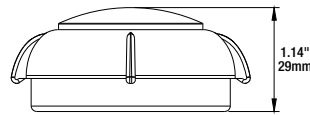
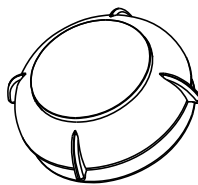


Large Shield

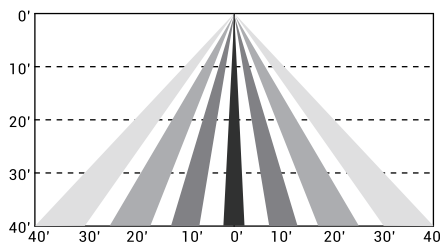


Sensor Information

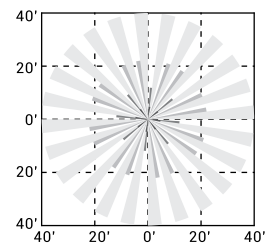
- Input voltage:** 12V_{dc}
- Bluetooth transmit line distance:** 100ft
- Detection range:** 48-80ft
- Rated current:** 55mA
- Dimming:** 0-10V
- Infrared sensor:** Omni-directional quad element pyroelectric
- Mounting height:** 15-40ft
- Detectable speed:** 1~10 ft/sec (0.3~3 m/sec)
- Operating temperature:** -40°F~131°F (-40°C~55°C)
- Operating humidity:** IP66
- Protocol:** Bluetooth Mesh BLE Proprietary



Zhaga Bluetooth Sensor Side View



Zhaga Bluetooth Sensor Coverage Top View



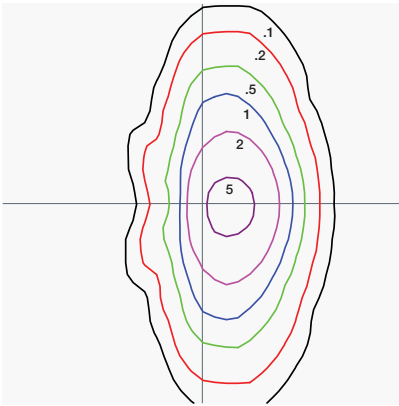
Poles

Click or scan QR tag for Poles information.

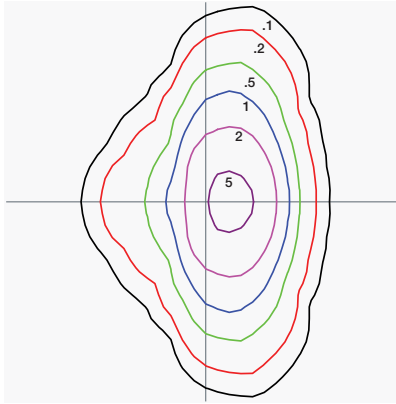
PHOTOMETRIC INFORMATION

100W

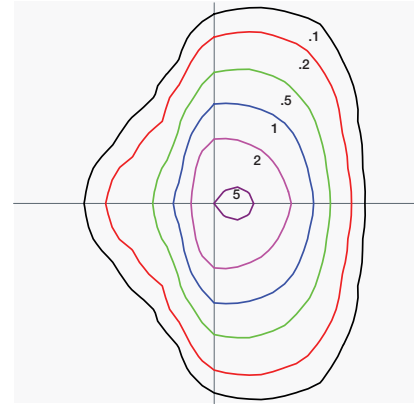
100W fixture, Front Row distribution, mounted at 25' mounting height



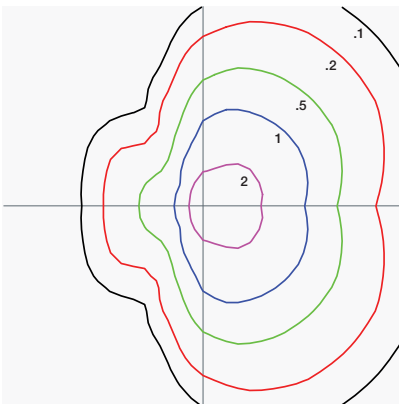
100W fixture, Type II distribution, mounted at 25' mounting height



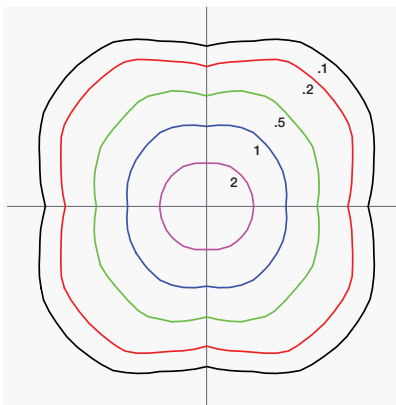
100W fixture, Type III distribution, mounted at 25' mounting height



100W fixture, Type IV distribution, mounted at 25' mounting height



100W fixture, Type V distribution, mounted at 25' mounting height



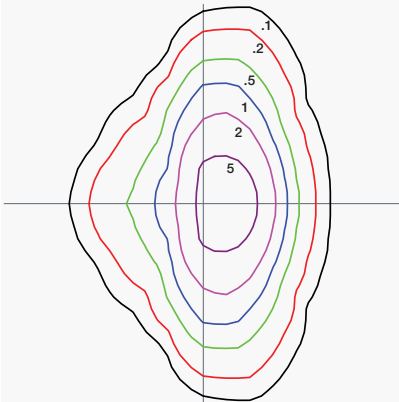
MOUNTING HEIGHT (FT)	15	18	22	25	30	35
MULTIPLIER	2.78	1.93	1.29	1	0.69	0.51

- Multiply the footcandle levels in the diagram according to the desired installation height
- Each tick on the diagram represents a multiple of the mounting height from the fixture

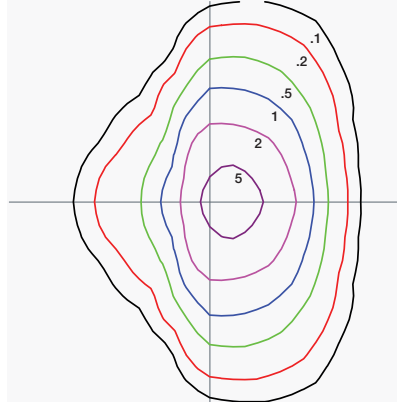
PHOTOMETRIC INFORMATION (CONTINUED)

190W

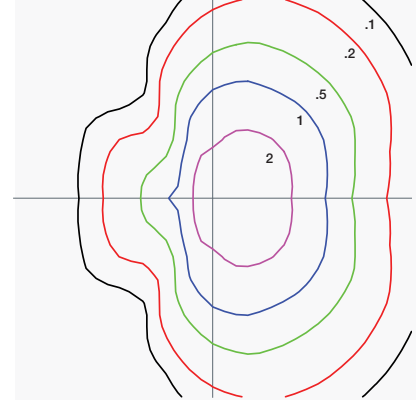
190W fixture, Type II distribution, mounted at 30' mounting height



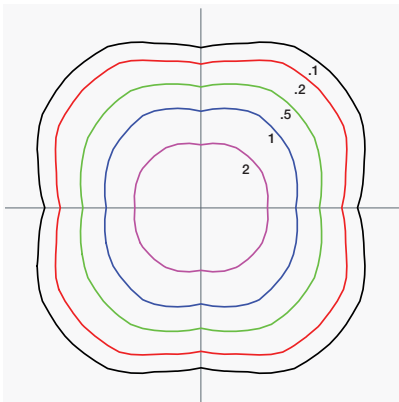
190W fixture, Type III distribution, mounted at 30' mounting height



190W fixture, Type IV distribution, mounted at 30' mounting height



190W fixture, Type V distribution, mounted at 30' mounting height



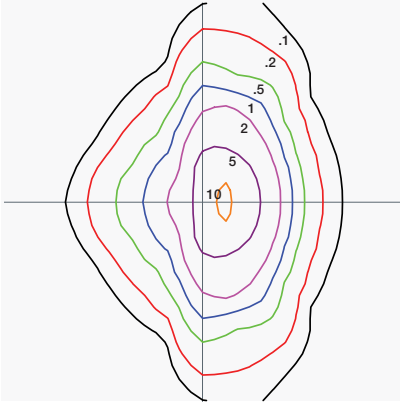
MOUNTING HEIGHT (FT)	20	22	25	30	35	40
MULTIPLIER	2.25	1.86	1.44	1	0.73	0.56

- Multiply the footcandle levels in the diagram according to the desired installation height
- Each tick on the diagram represents a multiple of the mounting height from the fixture

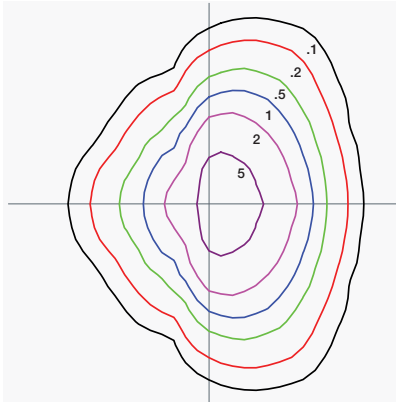
PHOTOMETRIC INFORMATION (CONTINUED)

290W

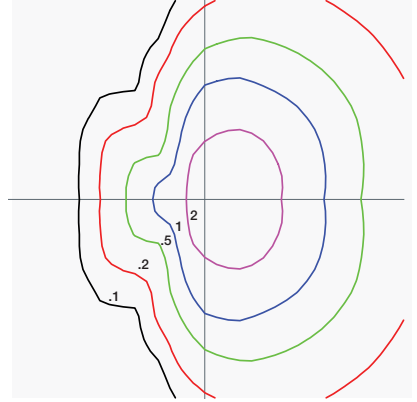
290W fixture, Type II distribution, mounted at 35' mounting height



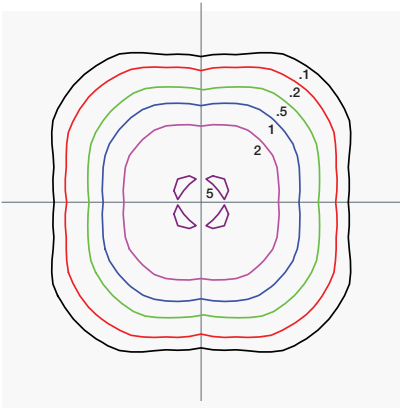
290W fixture, Type III distribution, mounted at 35' mounting height



290W fixture, Type IV distribution, mounted at 35' mounting height



290W fixture, Type V distribution, mounted at 35' mounting height



MOUNTING HEIGHT (FT)	22	25	30	35	40	45
MULTIPLIER	2.53	1.96	1.36	1	0.77	0.60

- Multiply the footcandle levels in the diagram according to the desired installation height
- Each tick on the diagram represents a multiple of the mounting height from the fixture

ADDITIONAL SPECIFICATIONS

- Specifications subject to change without notice. IES files available online.
- Cast aluminum alloy housing with powder coat paint finish and UV stabilized polycarbonate lens.



LEDVANCE LLC
181 Ballardvale Street, Suite 203
Wilmington, MA 01887 USA
Phone 1-800-LIGHTBULB (1-800-544-4828)
www.ledvanceUS.com

LEDVANCE is a registered trademark. All other trademarks are those of their respective owners. Specifications subject to change without notice.



SCAN TO FOLLOW US
ON SOCIAL MEDIA