

## PRODUCT DATASHEET

### PL-CUBE-AC -G4-1100-830

PrevaLED® Cube AC G4 | Spot-, Down- and Wallmount Light Engines and Modules



---

#### Areas of application

- Suitable for diffuser and reflector luminaires
- Hospitality, hotels, restaurants
- Public and commercial buildings
- Offices
- Secondary rooms, garages, storerooms, cellars

---

#### Product benefits

- Enables low-cost and compact luminaire designs
- Low profile
- Future-proof dimensions for reliable designs
- Near Lambertian light distribution at 110° beam angle for high quality of light
- Protection against overheating due to thermal derating
- 5 year guarantee

---

#### Product features

- Mains voltage driven LED engine
- Integrated control gear
- Diameter of light emitting surface: 61 mm
- Common mechanic and photometric interfaces

- Initial color consistency: < 3 SDCM
- Lifetime (L70/B50): 50,000 h (temperature at  $T_c = 70\text{ °C}$ )
- LED module is reinforced isolated to mounting surface
- Photobiological safety according to IEC/TR 62778, risk group RG1

## TECHNICAL DATA

### Electrical data

Nominal wattage	10.50 W
Construction wattage	10.50 W
Nominal voltage	230 V
Input voltage range	220...240 V
Type of current	AC
Nominal current	45.000 mA

### Photometrical data

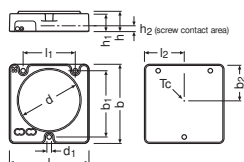
Luminous efficacy	111 lm/W
Luminous flux	917 lm <sup>1)</sup>
Luminous intensity	423 cd
Color temperature	3000 K
Color rendering index Ra	80
Light color LED	Warm White
Light color (designation)	Warm White
Standard deviation of color matching	≤3 sdc <sub>m</sub>
Rated peak intensity	423 cd
Flickering metric (Pst LM)	≤1
Stroboscope effect metric (SVM)	≤0.9

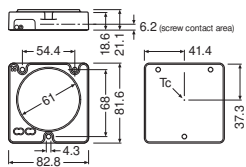
1) 120 °

### Light technical data

Beam angle	110 °
Starting time	< 0.1 s
Warm-up time (60 %)	< 2.00 s

### Dimensions & Weight





Length	82.80 mm
Width	81.60 mm
Height	21.10 mm
Product weight	60.00 g

### Colors & materials

Product color	White
---------------	-------

### Temperatures & operating conditions

Ambient temperature range	-20...+50 °C <sup>1)</sup>
Maximum temperature at tc test point	90 °C
Temperature range in operation	-20...90 °C <sup>2)</sup>
Performance temp. acc. to IEC 62717	70 °C

1)  $T_a(\text{rated}) = 25 \text{ °C}$

2) At the  $T_c$  point

### Lifespan

Nominal lamp life time	50000 h
Number of switching cycles	100000

### Capabilities

Dimmable	No
----------	----

### Certificates & Standards

Standards	CE / ENEC
Type of protection	IP20
Energy consumption	10.50 kWh/1000h
Energy efficiency class	F
Energy class of contained light source	F

### LOGISTICAL DATA



Temperature range at storage	-20...85 °C
------------------------------	-------------

Energy labelling regulation data acc EU 2019/2015

Lighting technology used	LED
--------------------------	-----

DOWNLOAD DATA

Documents and certificates

 User instruction
 Certificates

LOGISTICAL DATA

Product code	Packaging unit (Pieces/Unit)	Dimensions (length x width x height)	Gross weight	Volume
4062172239455	Unpacked 1			
4062172239462	Shipping box 20	481 mm x 393 mm x 51 mm	1432.00 g	9.64 dm <sup>3</sup>

The mentioned product code describes the smallest quantity unit which can be ordered. One shipping unit can contain one or more single products. When placing an order, for the quantity please enter single or multiples of a shipping unit.

DISCLAIMER

Subject to change without notice. Errors and omission excepted. Always make sure to use the most recent release.