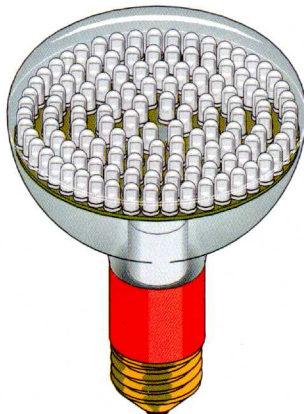




R30 Indoor Floodlight LED Lamps

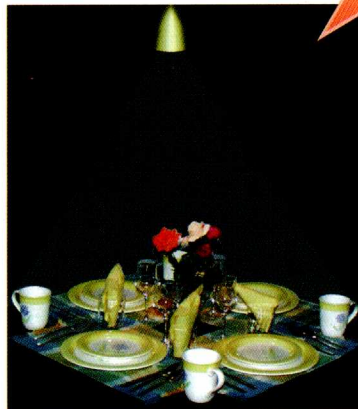
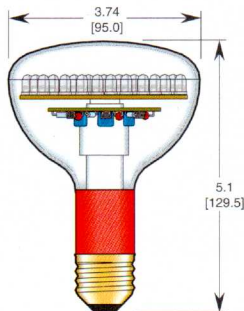
Features

- Easy Installation Using Existing Socket
- LED Operating Life: 100,000+ hrs (10+ years)
- Solid-State, Fast Turn on, No Power Surge
- High Shock/Vibration Resistant
- Major Power Savings
- Reduces Light Pollution
- Voltages Available: 12V, 24V, 28V, 120VAC, 240VAC
- Major Reduction in Heat Generation
- Three-Year Lamp Warranty
- Choice of 13 Colors & Infrared

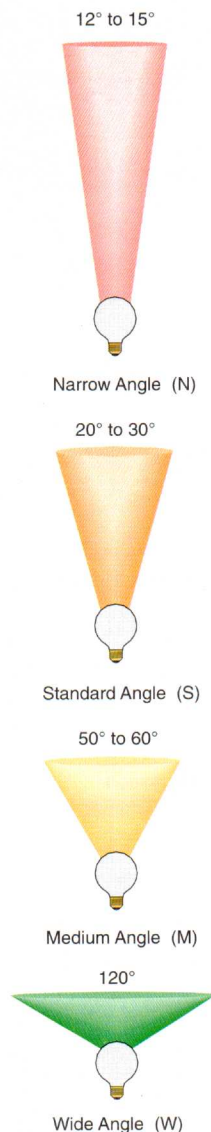


R30

Dimensions



Viewing Angle Options*



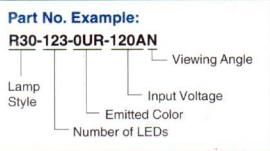
Part Number	Emitted Color	Input Voltage	Power (Watts) typ	Illumination (End Lumens)	** Intensity per LED I _v (mcd) typ	λ _p (nm)
R30-123-0UR-120AN	UL RED	120VAC	6-7	227@15°	2000	660
R30-123-0ER-120AN	SP RED	120VAC	6-7	520@22°	3500	633
R30-123-0UO-120AN	SP ORANGE	120VAC	6-7	935@15°	6500	612
R30-123-0UY-120AN	SP YELLOW	120VAC	6-7	370@15°	5500	595
R30-123-0PY-120AN	SP PURE YEL	120VAC	6-7	370@15°	5500	592
R30-123-0YW-120AS	YEL WHITE	120VAC	6-7	450@20°	3K/6K	592/8000K
R30-123-0IW-120AS	INC WHITE	120VAC	6-7	316@20°	2000	4500K
R30-123-0CW-120AS	COOL WHITE	120VAC	6-7	635@20°	6000	8000K
R30-123-2CW-120AN	COOL WHITE	120VAC	6-7	246@15°	2000	8000K
R30-123-0UG-120AN	LIME GREEN	120VAC	6-7	123@15°	1000	570
R30-123-0AG-120AN	AQ GREEN	120VAC	6-7	1464@15°	10,000	525
R30-123-1AG-120AN	AQ GREEN	120VAC	6-7	370@15°	3000	525
R30-123-2AG-120AN	AQ GREEN	120VAC	6-7	738@15°	6000	525
R30-123-0BG-120AN	BLU GREEN	120VAC	6-7	370@15°	3000	505
R30-123-1BG-120AN	BLU GREEN	120VAC	6-7	123@15°	1000	505
R30-123-2BG-120AN	BLU GREEN	120VAC	6-7	246@15°	2000	505
R30-123-0PB-120AN	SP BLUE	120VAC	6-7	370@15°	3000	470
R30-123-1PB-120AN	SP BLUE	120VAC	6-7	123@15°	1000	470
R30-123-2PB-120AN	SP BLUE	120VAC	6-7	246@15°	2000	470
R30-123-00B-120AN	UL BLUE	120VAC	6-7	62@15°	500	430
R30-123-851-120AN	INFRARED	120VAC	6-7		12mW †	850
R30-123-881-120AN	INFRARED	120VAC	6-7		10mW †	880
R30-123-941-120AN	INFRARED	120VAC	6-7		8mW †	940

For Other Voltages, Replace -120AN with -012N (for 12VDC), -24N (for 24VDC), -240AN (for 240VAC)

* Replace N in Part Number with Required Viewing Angle Options
N - Narrow (12°) S - Standard (30°) M - Medium (50°) W - Extra Wide (120°)

** 1 End-Lumen is approximately 1 End-Footcandle, measurement for Narrow Angle (N)
(For more information, refer to page 5 "Common Light Measurement Terms")

† Infrared LED intensity is shown as typical milliwatt power per steradian



• Three-Year Lamp Warranty

Specifications subject to change without notice.

LEDTRONICS, INC.
THE FUTURE OF LIGHT



23105 Kashiwa Court, Torrance, CA 90505
Phone: (800) 579-4875 or (310) 534-1505
Fax: (310) 534-1424
E-mail: webmaster@ledtronics.com
Website: www.ledtronics.com