

PROJECT NAME: _____
 NOTES: _____

CAT. #: _____
 FIXTURE SCHEDULE: _____

Recessed Architectural Downlights

Wattage and Color Selectable



18W ENGINE WITH ROUND REFLECTOR



30W ENGINE WITH WALL WASHER



NEW CONSTRUCTION

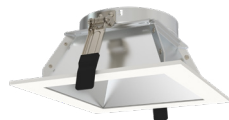
REFLECTORS



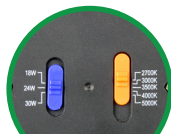
ROUND SILVER REFLECTOR & WHITE TRIM



ROUND WHITE REFLECTOR & WHITE TRIM



SQUARE SILVER REFLECTOR & WHITE TRIM



Wattage and CCT switch



Beam Angle Selector



Locking Mechanism

Product Description:

Introducing the Recessed Architectural Downlight – a revolutionary modular system designed to future-proof your lighting solutions. Each light engine is packed with features, making it the simplest and most efficient way to upgrade incandescent, fluorescent, or metal halide downlights to state-of-the-art LEDs. The light engine offers three wattage options, five CCT selections, and two beam angles, all in one package. With its multi-mode dimming capabilities supporting Triac, ELV, and 0-10V dimming, as well as its 12v aux output that can be paired with Maxlite's patented c-Max control system, this provides the most versatile Luminaire Level Lighting controls (LLLC) option for Downlights in the industry.

Paired with multiple sizes of downlight or wall-wash reflectors, this Energy Star 1.0 qualified downlight ensures top-tier energy efficiency and performance. Whether for retrofit or new construction, recessed architectural downlights provide the most cost-effective solution for replacing architectural downlights, delivering significant energy savings and superior lighting quality.

Features:

- 12V Aux for c-Max compatibility
- Wattage and CCT select Light Engines with Adjustable Beam Angles
 - 12/16/20W Engine: 25°-45°; 18/24/30W Engine: 25°-45°;
 - 30/40/50W Engine: 30°-50°
- Downlight and Wall-Wash Reflectors available in Silver and White finish
- Multi-Mode dimming supporting Triac / ELV (at 120v) and 0-10V dimming (at 120-277V)
- 12V Aux for c-Max compatibility
- Field Installable Emergency Battery Back Up Available

Multimode Dimming:

- 0-10v dimming 120-277V
- Triac / ELV 120V only

Listings:

- ETL Listed for damp locations, indoor
- ETL Classified for damp locations, indoor
- Energy Star V1.0 qualified

Ordering Information

Step 1 - Select the light engine

| FAMILY | DIMMING MODE | - | WATTAGE | CCT | SOURCE |
|--|---------------------------------------|---|---|---|---|
| RAD = Recessed Architectural Downlight Light Engine | M = Multi-Mode (0-10V & TRIAC) | - | 12W = 12/16/20W Selectable 18W = 18/24/30W Selectable 30W = 30/40/50W Selectable | CS = 27/30/35/40/50 CCT Selectable | [BLANK] = Blank TA = TAA Compliant |

Step 2 - Select the reflector

| FAMILY | TYPE | - | SIZE | REFLECTOR FINISH | FLANGE FINISH | SOURCE |
|---|----------------------------|---|--|---|------------------|---|
| RAD = Recessed Architectural Downlight Reflector | R = Round | - | 4 = 4" reflector** 6 = 6" reflector 8 = 8" reflector 10 = 10" reflector | M = Matte Silver W = White | W = White | [BLANK] = Blank TA = TAA Compliant |
| | W = Round Wall Wash | - | 6 = 6" reflector 8 = 8" reflector 10 = 10" reflector*** | | | |
| | RS = Square | - | 4 = 4" reflector*** 6 = 6" reflector 8 = 8" reflector | M = Matte Silver | | |

Not compatible for 30W engine | * Special Order only | For new construction, order CDFK-4-10IN/2PK (sold separately)



Recessed Architectural Downlights Wattage and Color Selectable

Stocked Items (Engines)

| MODEL NUMBER | ORDER CODE | ENERGY STAR |
|--------------|------------|-------------------------|
| RADM-12WCS | 112673 | 3999598 |
| RADM-18WCS | 112674 | 3999599 |
| RADM-30WCS | 112675 | 3999600 |
| RADM-12WCSTA | 112315 | 3999598 |
| RADM-18WCSTA | 112316 | 3999599 |
| RADM-30WCSTA | 112317 | 3999600 |

Stocked Items (Round Reflectors)

| MODEL NUMBER | ORDER CODE | REFLECTOR COLOR | TRIM COLOR | REFLECTOR SIZE |
|--------------|------------|-----------------|------------|----------------|
| RADR-4MW | 112676 | Silver | White | 4" |
| RADR-4WWTA | 112325 | White | White | 4" |
| RADR-6MW | 112677 | Silver | White | 6" |
| RADR-6WWTA | 112326 | White | White | 6" |
| RADR-8MW | 112678 | Silver | White | 8" |
| RADR-8WWTA | 112327 | White | White | 8" |
| RADR-10MW | 112679 | Silver | White | 10" |

Stocked Items (Wall Wash Reflectors)

| MODEL NUMBER | ORDER CODE | REFLECTOR COLOR | TRIM COLOR | REFLECTOR SIZE |
|--------------|------------|-----------------|------------|----------------|
| RADW-6MWTA | 112322 | Silver | White | 6" |
| RADW-8MWTA | 112323 | Silver | White | 8" |

Stocked Items (Square Reflectors)

| MODEL NUMBER | ORDER CODE | REFLECTOR COLOR | TRIM COLOR | REFLECTOR SIZE |
|--------------|------------|-----------------|------------|----------------|
| RADRS-4MWTA | 113837 | Silver | White | 4" |
| RADRS-6MWTA | 113839 | Silver | White | 6" |
| RADRS-8MWTA | 113841 | Silver | White | 8" |

Specifications

| | | RADM-12WCS | RADM-18WCS | RADM-30WCS |
|----------------------------|---|----------------------------|----------------|----------------|
| | | LUMENS (lm) @ 2700K | 1150/1500/1800 | 1900/2400/2800 |
| CRI | ≥ 90 | | | |
| CCT (K) | 2700K/3000K/3500K/4000K/5000K CCT Selectable (Default CCT: 2700K) | | | |
| L70 LIFETIME (hrs) | ≥ 50,000 | | | |
| VOLTAGE | 120-277V, 120V | | | |
| POWER FACTOR | ≥ 0.9 | | | |
| BBU | Available (see accessory table) | | | |
| LISTINGS | ETL Listed & Classified, ENERGY STAR V1.0 | | | |
| ENVIRONMENT | Damp locations | | | |
| WARRANTY | 5 years | | | |

BBU Lumen Output - EBUUP17015N200B

| Model Number | Wattage Setting | EM lumen - 90 mins |
|--------------|-----------------|--------------------|
| RADM-12WCS | 12W | Min 600lm |
| | 16W | Min 800lm |
| | 20W | Min 1000lm |
| RADM-18WCS | 18W | Min 1000lm |
| | 24W | Min 1100lm |
| | 30W | Min 1100lm |

BBU Lumen Output - EBUUP17015N200B

| Model Number | Wattage Setting | EM lumen - 90 mins |
|--------------|-----------------|--------------------|
| RADM-30WCS | 30W | Min 1100lm |
| | 40W | Min 1100lm |
| | 50W | Min 1100lm |