



AmbiStar

AMBISTAR ELE BALLAST (2) 26W CFL (4-PIN) 120V

Ambistar electronic ballasts are an easy-to-install, energy-efficient replacement solution for optimizing residential and hospitality lighting.

Product data

General Information		Wire Striplength	
Lamp Type	CFQ26W/G24Q	Wire Striplength	0.375 mm
Number of Lamps	1/2 piece/unit	Lamp Connection	Series
Ballast Type	Electronic Fluorescent	Wire Length by Color	No wires
Base Model	RCF2S26HILDQS	Wire Gauge (Nom)	18AWG mm
Suitable For Outdoor Use	Yes	Wire Type	Solid
Automatic Restart	Yes	Remote Wiring Configuration Allowed	Yes
		Tandem Wiring Configuration Allowed	Yes
		Through Wiring Configuration Allowed	Yes
Operating and Electrical		Max Ballast-Lamp Distance Remote	1-L = 15' / 2-L = 6'
Input Voltage	120 V	Wiring	
Input Frequency	60 Hz	Max Ballast-Lamp Distance Tandem	2-L: Red = 6'
Max THD	10 %	Wiring	
Starting Method	Rapid Start	Max Ballast-Lamp Distance Through	2-L: Red = 6'
Lamp Current Crest Factor (Nom)	1.7	Wiring	
Ignition Time (Nom)	1 s	Connector Type	Poke-In
Ballast Factor (Nom)	1		
Power Factor (Nom)	0.98	Temperature	
Input Current (Operating) (Nom)	0.43 A	T-Case Maximum (Nom)	85 °C
Input Power (Nom)	51 W		
Rated Lamp Watts	26 W	Mechanical and Housing	
		Housing Material	Metal/Plastic
		Housing	H1
		Housing Dimensions	4.98" x 2.4" x 0.98"
Wiring			
Color Input Terminals	BLK & WHT		
Color Output Terminals	RED, YEL & BLU		

Approval and Application

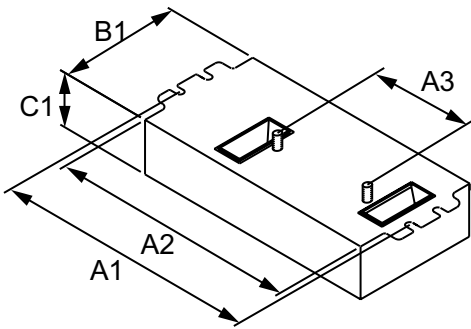
EMC Immunity Standard	FCC Consumer
Approbation Marks	CSA certificate UL certificate CEC Listing Energy Star RoHS Compliant
Sound Rating	A
UL Recognized	No

Product Data

Order product name	AMBISTAR ELE BALLAST (2) 26W CFL (4-PIN) 120V
--------------------	-----------------------------------------------

EAN/UPC - Product	781087027431
Order code	RCF2S26H1LDQS35M
Numerator - Quantity Per Pack	1
Numerator - Packs per outer box	20
Material Nr. (12NC)	913710214702
Net Weight (Piece)	159.000 g

Dimensional drawing



ELE BALLAST (2) 26W CFL (4-PIN) 120V

Product	A1	A2	A3	B1	C1
AMBISTAR RCF2S26H1LDQS35M	4.60 in	4.20 in	2.00 in	2.40 in	0.98 in

