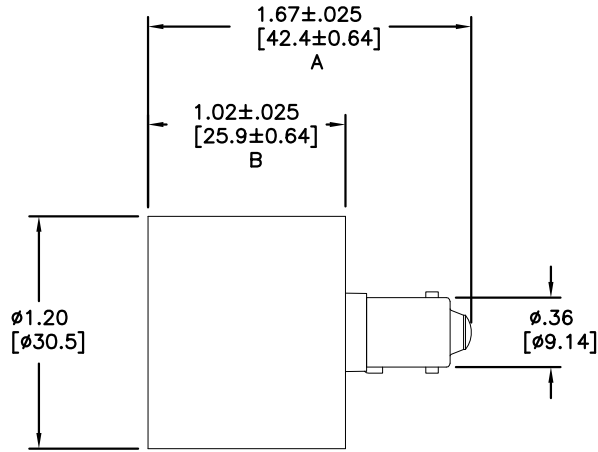
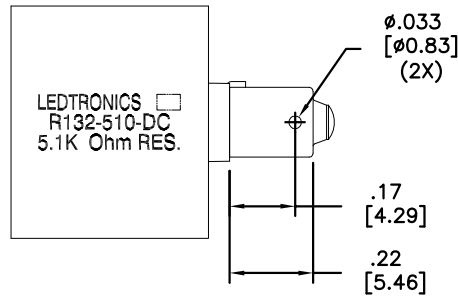


LTR	REVISION	DATE	APPD
-	RELEASED	03-13-19	



SIDE VIEW



ROTATED 90°



**NOTES:**

1. ALL DIMENSIONS ARE IN INCHES [MILLIMETERS].
2. SLEEVE MATERIAL / COLOR: RYNITE FR530 / GREEN
3. BASE MATERIAL: (BODY) BRASS & NICKEL PLATED BRASS (BARREL)

REVISION NOTIFICATION	
<input type="checkbox"/>	DLC
<input type="checkbox"/>	UL/ETL
<input type="checkbox"/>	MADE IN USA
<input type="checkbox"/>	CUSTOMER _____
<input type="checkbox"/>	OTHER
REDLINE CHECKLIST	
<input type="checkbox"/>	REDLINE(YES)
<input type="checkbox"/>	DATE: _____
<input type="checkbox"/>	INITIATED BY: _____
<input type="checkbox"/>	ECR REQUIRED YES <input type="checkbox"/> NO <input type="checkbox"/>
<input type="checkbox"/>	WORK ORDER# _____

ELECTRICAL-OPTICAL CHARACTERISTICS (Ta = 25°C)

RES-R132-510-DC	10	5100 Ohm	1.67 [42.4]	1.02 [25.9]
LEDTRONICS PART NO.	POWER RATING	RESISTOR VALUE	DIMENSIONS TYP (inches)[mm] A	DIMENSIONS TYP (inches)[mm] B

 LEDTRONICS,™ INC. 23105 KASHIWA COURT TORRANCE, CA 90505	-PROPRIETARY- This document contains Proprietary Information of LEDTRONICS, INC. It may not be copied, used or disclosed for any purpose without the prior express written consent of LEDTRONICS, INC.		TITLE <b>RES-R132-510-DC</b>					
	.XXX ± .010 TOLERANCE PER ANSI-Y14.5 .XX ± .025 (UNLESS OTHERWISE STATED) ANGLES ± 0°,30' FRACT. ± 1/32		DWG NO	SCALE	SHEET	DATE		
			CMMS0019-CUST	1:1	1 OF 1	03-13-19		
	CODE IDENT NO.	DWG BY HF	CHK BY	QA SB	MFG LD	R&D UF		
8Z410	03-13-19		05-31-19	05-30-19	05-30-19			