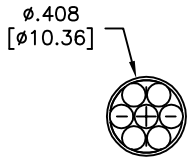
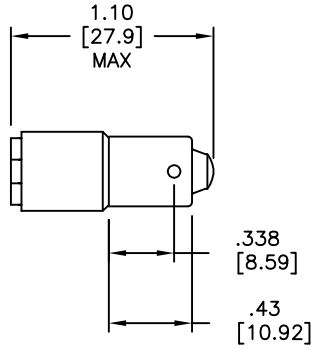


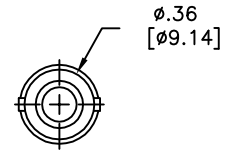
LTR	REVISION	DATE	APPD
A	031119-HF01: ADDED P/N: RPLB-0308-028V	03-13-19	HF



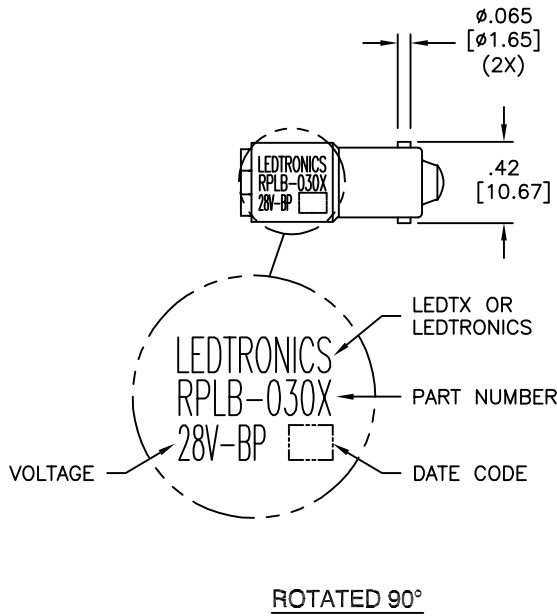
TOP VIEW



SIDE VIEW



REAR VIEW



REVISION NOTIFICATION	
<input type="checkbox"/>	DLC
<input type="checkbox"/>	UL/ETL
<input type="checkbox"/>	MADE IN USA
<input type="checkbox"/>	CUSTOMER _____
<input type="checkbox"/>	OTHER _____
REDLINE CHECKLIST	
<input type="checkbox"/>	REDLINE(YES)
<input type="checkbox"/>	DATE: _____
<input type="checkbox"/>	INITIATED BY: _____
<input type="checkbox"/>	ECR REQUIRED YES <input type="checkbox"/> NO <input type="checkbox"/>
<input type="checkbox"/>	WORK ORDER# _____

NOTES:

1. ALL DIMENSIONS ARE IN INCHES [MILLIMETERS].
2. SLEEVE MATERIAL: RYNITE FR530
3. BASE MATERIAL: (BODY) BRASS & NICKEL PLATED BRASS (BARREL)

ELECTRICAL-OPTICAL CHARACTERISTICS (Ta = 25°C)

RPLB-0301-28V	RED	28Vdc	0.020 A	-	-	654	105°
RPLB-0303-28V	AMBER	28Vdc	0.020 A	-	-	610	120°
RPLB-0304-28V	YELLOW	28Vdc	0.020 A	-	-	595	120°
RPLB-0306-28V	GREEN	28Vdc	0.015 A	-	-	520	105°
RPLB-0308-028V	SUPER BLUE	28Vdc	0.020 A	-	-	462	110°
RPLB-0309-28V	WHITE	28Vdc	0.020 A	-	-	8000K	105°
LEDTRONICS PART NO.	COLOR EMITTED	INPUT VOLTAGE, V (typ.)	CURRENT (A)	POWER (W)	MAXIMUM CANDELA	λP nm COLOR TEMP. (K)	VIEWING ANGLE (FULL BEAM WIDTH @ 50% INTENSITY)

LED[®]
LEDTRONICS,™ INC.
 23105 KASHIWA COURT
 TORRANCE, CA 90505

-PROPRIETARY-
 This document contains Proprietary Information of LEDTRONICS, INC. It may not be copied, used or disclosed for any purpose without the prior express written consent of LEDTRONICS, INC.

.XXX ± .010 TOLERANCE PER ANSI-Y14.5
 .XX ± .025 (UNLESS OTHERWISE STATED)
 ANGLES ± 0°,30'
 FRACT. ± 1/32

TITLE							
RPLB-030X-28V							
DWG NO	SCALE	SHEET	DATE				
RPLB-28V-BP	1:1	1 OF 1	10-25-11				
CODE IDENT NO.	DWG BY GP	CHK BY	QA EE	MFG LD	R&D UF		
8Z410	10-25-11		03-26-19	03-26-19	03-26-19		