

ELECTRONIC LOW VOLTAGE TRANSFORMER

| | |
|---------------------------------|--|
| Input Voltage | 120Vac, 277VAC or 230VAC - 50-60Hz |
| Output | 11.5 VAC or 23.5 VAC |
| Enclosure Material | Aluminum |
| Weight | 24 oz. |
| Power Factor | > 0.95 |
| Operating Frequency | 25KHz |
| Total Harmonic Dstortion | ≤ 20% |
| Input | 6", 18AWG stranded, 105 degree C stripped 3/8" tinned |
| Output | 6", 18AWG stranded, 105 degree C stripped 3/8" tinned |

ENVIRONMENTAL SPECIFICATIONS:

| | |
|-------------------------------------|---|
| Maximum Case Temperature | 90°C |
| Minimum Starting Temperature | -30°C |
| Sound Rating | A+ |
| Operating Humidity | 95% relative humidity, non-condensating |
| Environmental Protection | Epoxy Sealed for moisture resistance and shock/vibration resistance |

PRODUCT FEATURES :

- High Reliability
- Moisture Resistant
- Emits no audible noise
- Low Harmonic Distortion
- High power factor
- Lightweight, compact design
- Small case size
- Works with most commercially available dimmers. Hardwire electronic dimmers are recommended for optimum performance.

APPROVALS:

- Class P Type 1
Outdoors
- Class 2 Approved



Soft Start Circuitry

All models of Hatch low-voltage transformers utilize a soft start circuitry to maximize lamp life. The soft start circuit ramps up the lamp filament voltage slowly when the lamp is cold.

NOTE: Instant Start on Hot Lamp Re-Strike

ELECTRICAL FEATURES:

Electronic Short-Circuit Protection

All hatch low-voltage transformers employ our (ESP) Electronic Short Circuit and overload Protection. The ESP sensing circuit will instantly shut down the output before any of the components are stressed if a short circuit or over load is detected. The transformer will automatically reset as soon as the fault is corrected.

HARDWIRE ELECTRONIC

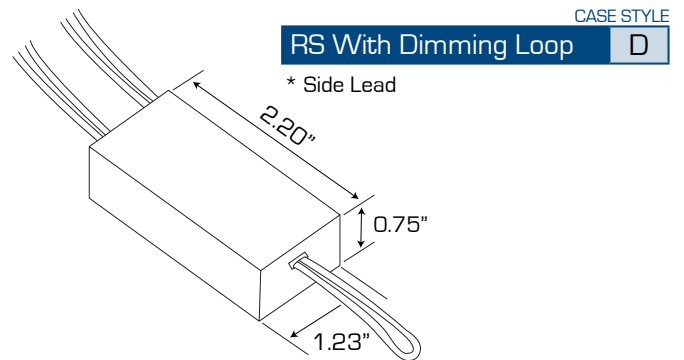
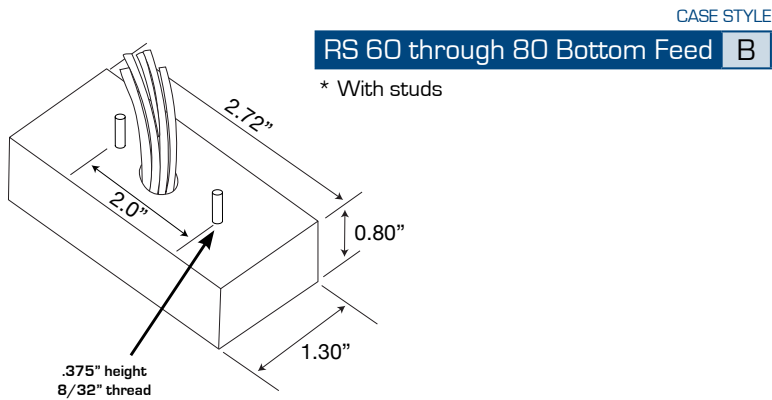
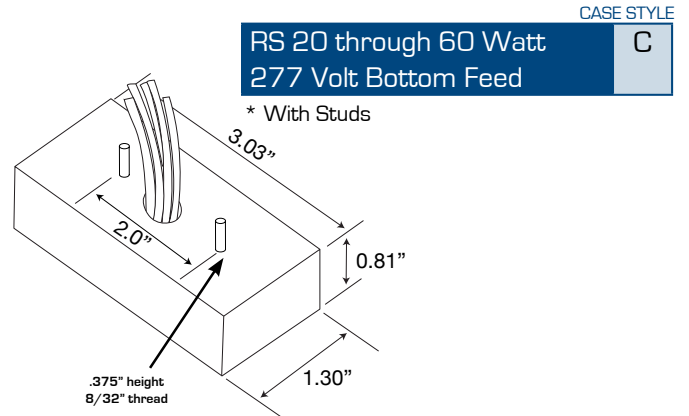
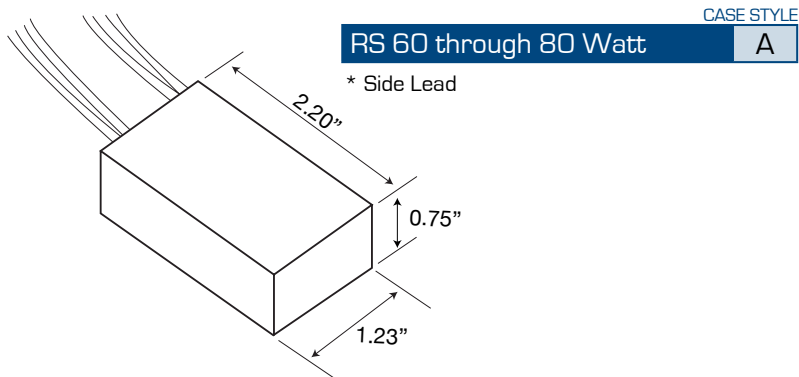
| Max Watts | Min Watts | Hatch Part Number | Input Volts | Output Volts | Input Amps | Output Amps | Case Style | Wire Diagram | Safety Listing |
|-----------|-----------|-------------------|-------------|--------------|------------|-------------|------------|--------------|-----------------------------------|
| 60 | 5 | RS12-60M | 120 | 11.5 | 0.5 | 5.3 | A | I | UL/C-UL Recognized, Class 2 |
| | | RS12-60MWD | | | | | D | II | |
| | | RS12-60-BF | | | | | B | I | |
| 80 Watt | | | | | | | | | |
| 80 | 5 | RS12-80 | 120 | 11.5 | 0.67 | 7.0 | A | I | UL/C-UL Recognized |
| | | RS12-80MG | | | | | A | IV | |
| | | RS12-80MGN | | | | | A | IV | |
| | | RS12-80MWD | | | | | D | III | |
| | | RS12-80BFS | | | | | B | I | |
| | | RS24-80M | | 23.5 | | 3.4 | A | I | |
| | | RS12-80-230 | 230 | 11.5 | 0.35 | 7.0 | A | I | |
| | | RS12-80-277* | 277 | | 0.29 | 7.0 | A | I | |
| | | RS12-80-277WD* | | | | | D | III | |
| | | RS12-80-277BF* | | | | | C | I | |

* NOTE: Must use a minimum of 20 watts when using dimmers. It is also important to confirm dimming controls compatibility with the manufacturer and your Hatch representative. 277 Volt dimming is not recommended.

DIMENSIONAL & WIRE DIAGRAMS CAN BE FOUND ON PAGE 2

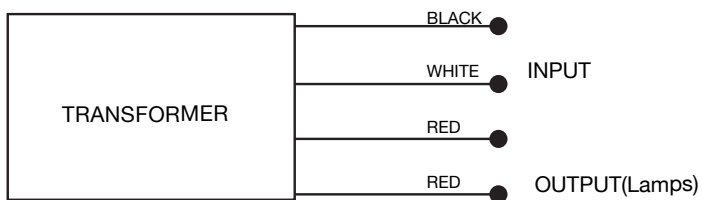
ELECTRONIC LOW VOLTAGE TRANSFORMER

DIMENSIONS:

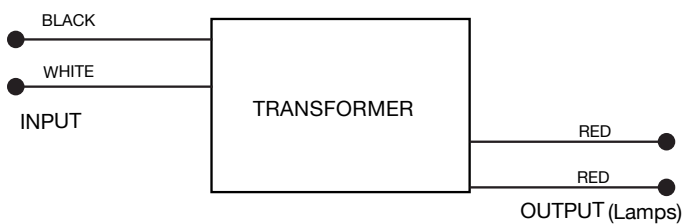


WIRING DIAGRAMS:

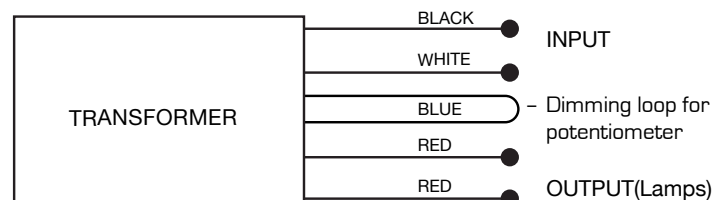
I. Halogen Lamps



II. Halogen Lamps



III. Halogen Lamps



IV. Halogen Lamps

