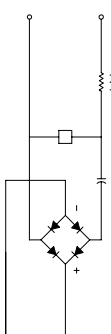


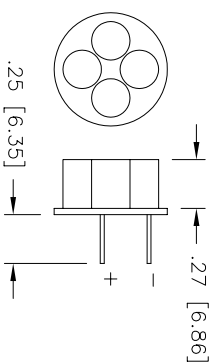
LEDTRONICS PART NO.	CLUSTER PART NO.	CAPACITOR PART NO.	SHRINK TUBE PART NO.	SLEEVE PART NO.	BASE PART NO.
SLF464-0UY-120A	4LDF190CW3K-01	CA-120VAC/30	ST-1/16X.75XBLK	SLV-SL467Y	BASE-S467

FORM 032405-1

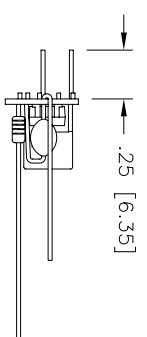
LTR	REVISION	DATE	APPD
E	081805-RB01:MODIFIED SLV-SL467	04-25-06	MM



CLUSTER
SEE TABLE



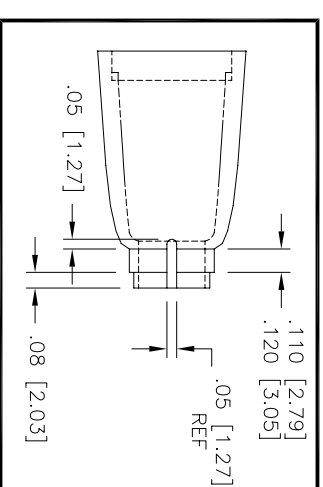
CAPACITOR
SEE TABLE



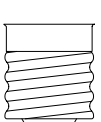
SHRINK TUBE
SEE TABLE



SLEEVE
SEE TABLE
MODIFY SLEEVE AS SHOWN

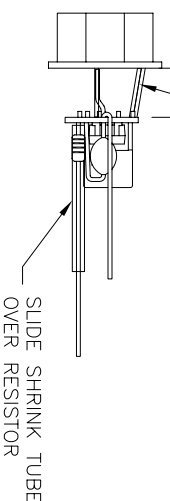


BASE
SEE TABLE



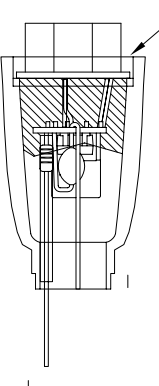
1

.25 [6.40] →
SOLDER CAP ASSY TO CLUSTER ACCORDING TO POLARITY AS SHOWN WITH (Pb FREE)



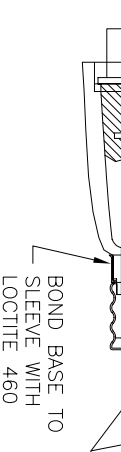
2

BOND LED ASSY TO SLEEVE WITH HOT GLUE 3M-3779



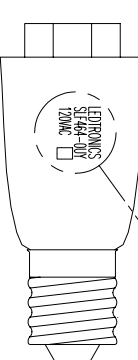
3

BOND BASE TO SLEEVE WITH LOCTITE 460
BEND, TRIM, & SOLDER BASE CONNECTIONS WITH (Pb FREE)

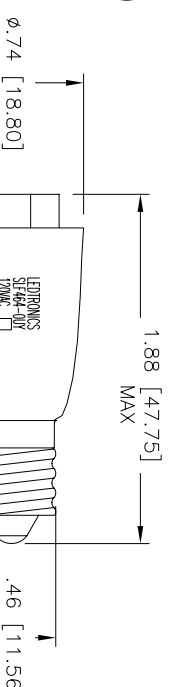


4

LEDIX OR LEDTRONICS
PART NO.
DATE CODE
VOLTAGE



5



TEST REQUIREMENTS:

1. TORQUE TEST FINISHED PRODUCTS TO 3 IN-LBS.
2. LIVE BURN IN FOR 10 MIN. AT RATED VOLTAGE; ALL DEVICES.
3. TEST FOR COLOR AND POLARITY
4. ELECTRICAL TEST IN ACCORDANCE WITH P/N DESIGNATION.

SLF464-0UY-120A	SUPER YELLOW	120	20	595
LEDTRONICS PART NO.	COLOR EMITTED	SET VOLTS	READ mA typ	λ P nm
ELECTRICAL TEST				

REVISION NOTIFICATION	
<input type="checkbox"/>	PMA
<input type="checkbox"/>	UL
<input type="checkbox"/>	CUSTOMER
<input type="checkbox"/>	OTHER

LEDTRONICS, INC.
23105 KASHIWA COURT
TORRANCE, CA 90505

PROPRIETARY
This document contains proprietary information. It is not to be copied, used or disclosed for any purpose without the prior express written consent of LEDTRONICS, INC.

XXX ± 0.10 TOLERANCE PER ANSI-Y14.5
.XX ± .025 (UNLESS OTHERWISE STATED)
FRACT. ± 1/32

TITLE				SLF464-0UY-120A			
DWG NO	SCALE	SHEET	DATE	DWG BY	CHK BY	QA	CUSTOMER
SDBD0240	1:1	1 OF 1	07-08-96	SMA	RA	GZ	GENERIC