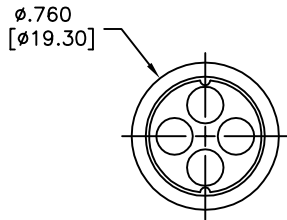
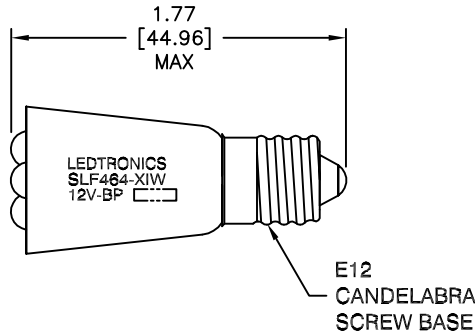


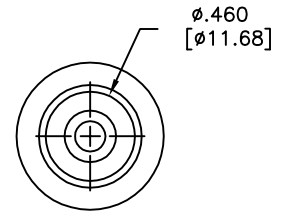
LTR	REVISION	DATE	APPD
1	PRELIMINARY	11-17-21	



TOP VIEW



SIDE VIEW



REAR VIEW



NOTES:

1. ALL DIMENSIONS ARE IN INCHES [MILLIMETERS].
2. SLEEVE MATERIAL COLOR: RYNITE FR530 / WHITE
3. BASE MATERIAL: BRASS, NICKEL PLATED BRASS

REVISION NOTIFICATION
<input type="checkbox"/> DLC
<input type="checkbox"/> UL/ETL
<input type="checkbox"/> MADE IN USA
<input type="checkbox"/> CUSTOMER _____
<input type="checkbox"/> OTHER
REDLINE CHECKLIST
<input type="checkbox"/> REDLINE(YES)
<input type="checkbox"/> DATE: _____
<input type="checkbox"/> INITIATED BY: _____
<input type="checkbox"/> ECR REQUIRED YES <input type="checkbox"/> NO <input type="checkbox"/>
<input type="checkbox"/> WORK ORDER# _____

ELECTRICAL - OPTICAL CHARACTERISTICS (Ta = 25°C)

SLF464-XIW-012B	WARM WHITE	12Vdc	0.023 A	0.3 W	18.38 lm	1.46	9.5 cd	3000K	100°
LEDTRONICS PART NO.	COLOR EMITTED	INPUT VOLTAGE, V (typ.)	CURRENT (A)	POWER (W)	LUMENS	SCP	LUMINOUS INTENSITY	COLOR TEMP. (K)	VIEWING ANGLE (FULL BEAM WIDTH @ 50% INTENSITY)

 LEDTRONICS,™ INC. 23105 KASHIWA COURT TORRANCE, CA 90505	-PROPRIETARY- This document contains Proprietary Information of LEDTRONICS, INC. It may not be copied, used or disclosed for any purpose without the prior express written consent of LEDTRONICS, INC.		TITLE SLF464-XIW-012B						
	.XXX ± .010 TOLERANCE PER ANSI-Y14.5 .XX ± .025 (UNLESS OTHERWISE STATED) ANGLES ± 0°,30' FRACT. ± 1/32		DWG NO SLF464-12V-BP	SCALE 1:1	SHEET 1 OF 1	DATE 11-17-21			
	CODE IDENT NO. 8Z410	DWG BY HF 11-17-21	CHK BY	QA SB 11-19-21	MFG LD 11-19-21	R&D UF 11-19-21			