

MASTER SON-T PIA Plus

MASTER SON-T PIA Plus 70W E E27 1SL

High Pressure Sodium lamp with clear tubular outer bulb, high output and long reliable lifetime



Product data

• General Characteristics

System Description	External Ignitor
Cap-Base	E27
Cap-Base Information	-
Bulb	T35 [T 35mm]
Bulb Finish	Clear
Operating Position	any [Any or Universal (U)]
Life to 5% failures	17000 hr
Life to 10% failures	20000 hr
Life to 20% failures	23500 hr
Life to 50% failures	28000 hr

• Light Technical Characteristics

Color Code	220 [CCT of 2000K]
Color Rendering Index	25 (max) Ra8
Color Temperature	2000 K
Luminous Flux Lamp EM	6600 Lm
Luminous Efficacy Lamp EM	91 Lm/W
Lumen Maintenance 2000h	95 %
Lumen Maintenance 5000h	92 %
Chromaticity Coordinate X	540 -
Chromaticity Coordinate Y	420 -

• Electrical Characteristics

Lamp Wattage	70 W
Lamp Wattage EM 25°C, Nominal	70.0 W

Lamp Wattage EM 25°C, Rated	73.0 W
Voltage	220 V
Lamp Voltage	93 V
Lamp Current EM	0.975 A
Ignition Time	5 (max) s
Run-up time 90%	4 (max) min
Dimmable	No
Re-ignition Time [sec]	30 (max) s

• Environmental Characteristics

Energy Efficiency Label (EEL)	A+
Mercury (Hg) Content	12.2 mg
Energy consumption kWh/1000h	80 kWh

• Luminaire Design Requirements

Cap-Base Temperature	200 (max) C
Bulb Temperature	350 (max) C

• Product Dimensions

Overall Length C	156 (max) mm
Diameter D	35.75 (max) mm
Light Center Length L	102 mm

• Product Data

Order code	928483200093
Full product code	928483200093

PHILIPS

Full product name MASTER SON-T PIA Plus 70W E E27
 1SL
 Order product name MST SON-T PIA Plus 70W E E27
 1SL/12
 Pieces per pack 1
 Packing configuration 12
 Packs per outerbox 12

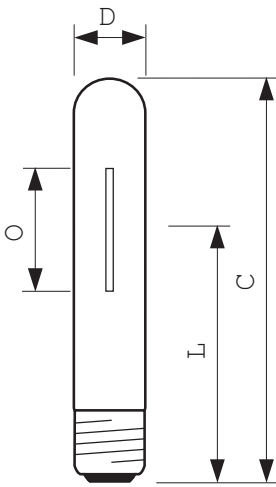
Bar code on pack - EAN1 6920590272868
 Bar code on outerbox - EAN3 6920590273797
 Logistic code(s) - 12NC 928483200093
 Net weight per piece 0.046 kg

Warnings and Safety

- Control gear must include end-of-life protection (IEC60662, IEC 62035)
- A lamp breaking is extremely unlikely to have any impact on your health. If a lamp breaks, ventilate the room for 30 minutes and

remove the parts, preferably with gloves. Put them in a sealed plastic bag and take it to your local waste facilities for recycling. Do not use a vacuum cleaner.

Dimensional drawing



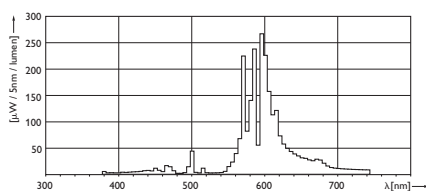
MASTER SON-T PIA Plus 70W E E27 1SL

Product	C (Max)	D (Max)	L (Norm)	O (Norm)
SON-T Plus 70W E E27	156	35.75	102	-

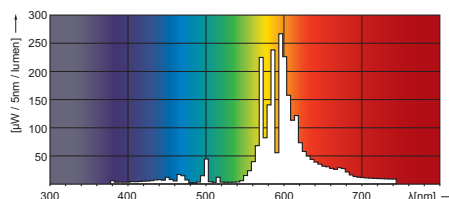


E27

Photometric data



MASTER SON-T PIA Plus 50W & 70W



MASTER SON-T PIA Plus 50W, 70W