

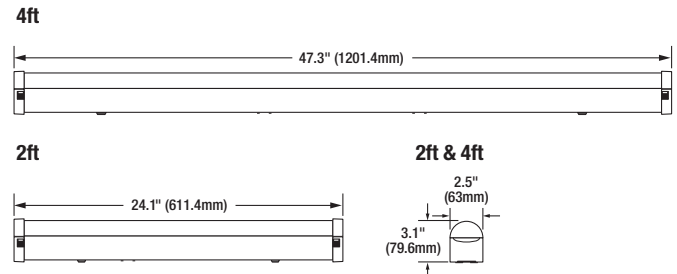
SYLVANIA Luminaires

UltraLED™ Strip



Catalog #	Type
Project	
Notes	
Date	
Prepared by	

Dimensions



Product Features

- Snap fit for quick, and easy tool-less access
- End-to-end linkable for customized run lengths
- Offered in three wattages/lumen packages and two lengths
- Application: retail, manufacturing, warehouse, office, education and low bay applications

Wattage Comparison Chart

Strip Source	Traditional System Wattage	LED System Wattage	Energy Savings
1x28W Fluorescent	25	16	36%
1x32W Fluorescent	28	16	43%
2x28W Fluorescent	49	32	35%
2x32W Fluorescent	56	32	43%
3x28W Fluorescent	64	47	27%
3x32W Fluorescent	75	47	37%
4x28W Fluorescent	97	47	52%
4x32W Fluorescent	116	47	59%

Specifications

Weight: 2ft: 2.1 lbs (1.0 kg) 4ft: 4.0 lbs (1.8 kg)

Construction: Sheet metal housing with powder coat paint finish and polycarbonate lens. The standard color is white.

LED System: LED system with a life rating of ≥50,000 hours at L₇₀ @25°C. Luminaire efficacy up to 127 LPW.

Electrical: Offered in 16, 32, and 47 Watts, the luminaire is designed to operate through the 120-277 V_{AC} voltage. The LED driver has a 4kV surge suppression and is a constant current device, meeting UL1310 and UL48 Class 1 with built-in over temperature protection. The power factor is ≥90% and THD is ≤20%.

Dimming: The driver is 0-10V dimmable (down to 10%). Please reference the compatibility document (LEDLUM012).

Color Characteristics: CRI>80; CCT of 3500K, 4000K or 5000K.

Optics: Diffuse polycarbonate lens.

Installation: Luminaire is surface or suspension mounted.

Operating Temperature: -13°F to +104°F (-25°C to +40°C).

Listings: cETLus listed to UL1598 standards and for damp locations.

Note: Suitable for use in closets, compliant with NFPA 70, NEC section 410.16 (A)(3) and 410.16 (C)(5).

Warranty: Standard 5-year luminaire warranty (LEDLUM001).

Note: Specifications subject to change without notice. IES files available online.



Ordering Guide

Item Number:

<input type="text"/>	<input type="text"/>	/	<input type="text"/>	<input type="text"/>	<input type="text"/>	<input type="text"/>	/	<input type="text"/>	<input type="text"/>	/	<input type="text"/>
STRIP	1A		XXX	UNV	D	8	XX		XX	S	WH
Product Name	Generation		Wattage	Voltage	Dimming	CRI	Color Temp (CCT)		Dimensions	Mounting	Color/Finish
STRIP	1A		016 = 16 Watts 032 = 32 Watts 047 = 47 Watts	UNV = 120-277V	D = 0-10V	8 ≥80	35 = 3500K 40 = 4000K 50 = 5000K		24 = 24 in 48 = 48 in	S = Surface	WH = White



Photometric Data

Average Illuminance (FC) at 30" AFF and avg/min uniformity
80/50/20 Reflectances*

		7 ft Mounting Height			10 ft Mounting Height			13 ft Mounting Height		
		On Center Luminaire Spacing								
		8'x10'	10'x10'	10'x12'	8'x10'	10'x10'	10'x12'	8'x10'	10'x10'	10'x12'
2 ft 16W	70525									
	70526	23fc/1.4	19fc/1.2	17fc/1.6	22fc/1.5	18fc/1.4	16fc/1.3	20fc/1.6	17fc/1.5	15fc/1.3
	70527									
4 ft 32W	74774									
	74775	49fc/1.38	40fc/1.2	35fc/1.6	47fc/1.5	39fc/1.4	34fc/1.3	44fc/1.6	36fc/1.5	32fc/1.3
	74776									
4 ft 47W	70522									
	70523	76fc/1.4	62fc/1.2	55fc/1.5	72fc/1.5	60fc/1.4	52fc/1.3	67fc/1.6	56fc/1.5	49fc/1.2
	70524									
		12 ft Mounting Height*			16 ft Mounting Height*			20 ft Mounting Height*		
		Continuous Rows								
		16ft on center	18ft on center	20ft on center	16ft on center	18ft on center	20ft on center	16ft on center	18ft on center	20ft on center
4 ft 32W	74774									
	74775	56fc/1.7	55fc/1.5	53fc/1.5	51fc/1.7	50fc/1.5	49fc/1.4	47fc/1.6	46fc/1.5	45fc/1.4
	74776									
4 ft 47W	70522									
	70523	86fc/1.7	85fc/1.5	82fc/1.5	79fc/1.7	77fc/1.5	75fc/1.4	72fc/1.7	71fc/1.6	69fc/1.5
	70524									

*Continuous rows within a room with no objects or obstructions.

Ordering Information

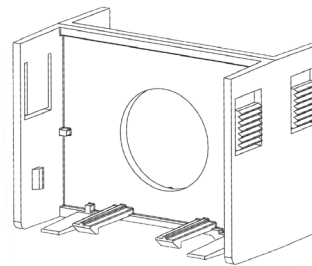
Item Number	Ordering Abbreviation	Power (W)	Input Voltage	Dimming	CRI	Color Temp (CCT)	Size	Total Fixture Lumens	LPW*	DLC**
70525	STRIP1A/016UNVD835/24S/WH	16	120-277V	0-10V	>80	3500K	2ft	2000	124	Std
70526	STRIP1A/016UNVD840/24S/WH	16	120-277V	0-10V	>80	4000K	2ft	1900	119	Std
70527	STRIP1A/016UNVD850/24S/WH	16	120-277V	0-10V	>80	5000K	2ft	2000	122	Std
74774	STRIP1A/032UNVD835/48S/WH	32	120-277V	0-10V	>80	3500K	4ft	3900	121	Std
74775	STRIP1A/032UNVD840/48S/WH	32	120-277V	0-10V	>80	4000K	4ft	4000	127	Std
74776	STRIP1A/032UNVD850/48S/WH	32	120-277V	0-10V	>80	5000K	4ft	4000	124	Std
70522	STRIP1A/047UNVD835/48S/WH	47	120-277V	0-10V	>80	3500K	4ft	5900	123	Std
70523	STRIP1A/047UNVD840/48S/WH	47	120-277V	0-10V	>80	4000K	4ft	6200	126	Std
70524	STRIP1A/047UNVD850/48S/WH	47	120-277V	0-10V	>80	5000K	4ft	6000	124	Std

*LPW per LM79 report
**Std for DLC Standard.

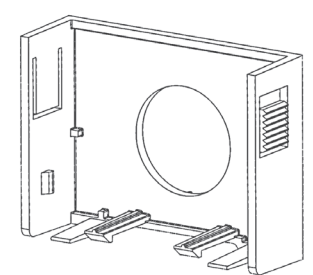
Accessories and Replacement Parts

Item Number	Ordering Abbreviation	Item Description
60000	STRIP1A/JOINERKIT/WH	Strip Connector, White Finish (Does not provide structural support to allow suspension mounting > 4ft between mounting locations)
60456	STRIP1A/KOENDCAP	Strip End Cap with Knockout, White Finish

NAED 60000



NAED 60456



LEDVANCE LLC
200 Ballardvale Street
Wilmington, MA 01887 USA
Phone 1-800-LIGHTBULB (1-800-544-4828)
www.sylvania.com

SYLVANIA and LEDVANCE are registered trademarks.
All other trademarks are those of their respective owners.
Licensee of product trademark SYLVANIA in general lighting.
Specifications subject to change without notice.

[/sylvania](#) [/sylvania](#)

