

# LAMPS

# T8 Linear Single & Double End Bypass & Linear T8 Hybrid

## ProLED T8 Linear 8' Double Ended Bypass Series



Product #	Product Code	Lamp Wattage	Base	Voltage	Color Temp.	CRI	Lumens	Useful Life <sup>2</sup>	Dimmable <sup>3</sup>	Pkg. Qty.	Beam Spread	MOL THD	Equivalent Wattage	DLC Qualified <sup>4</sup>
82875	T896FR42/840/BYP2/SP/LED	42	Fa8	120-277V	4000K	82	5500	50,000	No	10	270°	96" <20%	86	Standard
82876	T896FR42/850/BYP2/SP/LED	42	Fa8	120-277V	5000K	82	5500	50,000	No	10	270°	96" <20%	86	Standard
82877	T896FR42/840/BYP2/RDC/LED	42	R17d	120-277V	4000K	82	5500	50,000	No	10	270°	96" <20%	86	Standard
82878	T896FR42/850/BYP2/RDC/LED	42	R17d	120-277V	5000K	82	5500	50,000	No	10	270°	96" <20%	86	Standard
82879	T896FR42/865/BYP2/RDC/LED	42	R17d	120-277V	6500K	82	5500	50,000	No	10	270°	96" <20%	86	Standard

Must be operated with an ambient luminaire temperature between 32°F(0°C) and 113°F(45°C).  
Warning Halco ProLED® Linear Bypass T8 will not operate on a linear fluorescent ballast or with shunted lampholders. Please re-wire the luminaire as shown in the installation instructions included with the product and ensure non-shunted lampholders are installed in the luminaire before installing this product.

## ProLED T8 Linear Type B Double Ended Bypass Series

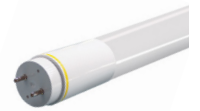


Product #	Product Code	Lamp Wattage	Base	Voltage	Color Temp.	CRI	Lumens	Useful Life <sup>2</sup>	Dimmable <sup>3</sup>	Pkg. Qty.	Beam Spread	MOL THD	Equivalent Wattage	DLC Qualified <sup>4</sup>
83886	T8FR14/835/BYP2/DE/LED	12	G13	120-277V	3500K	82	1700	50,000	No	1/25	270°	48" <20%	32	Standard
83887	T8FR14/840/BYP2/DE/LED	12	G13	120-277V	4000K	82	1800	50,000	No	1/25	270°	48" <20%	32	Standard

Must be operated with an ambient luminaire temperature between 32°F(0°C) and 113°F(45°C).  
Warning Halco ProLED® Linear Bypass T8 will not operate on a linear fluorescent ballast or with shunted lampholders. Please re-wire the luminaire as shown in the installation instructions included with the product and ensure non-shunted lampholders are installed in the luminaire before installing this product.

\* Contact your local rep for Project or Volume Pricing

## ProLED T8 Linear Type B Double-Single Ended Bypass Series



Product #	Product Code	Wattage	Base	Voltage	CCT	CRI	Lumens	Useful Life	Beam Spread	Pkg. Qty.	MOL	PF	Equivalent Wattage
84886	T848FR12/835/BYP4/DSE/LED	12.5	Medium Bi Pin	120-277V	3500	83	1650	50,000	160	25	48"	0.98	32
84887	T848FR12/840/BYP4/DSE/LED	12.5	Medium Bi Pin	120-277V	4000	83	1750	50,000	160	25	48"	0.98	32
84888	T848FR12/850/BYP4/DSE/LED	12.5	Medium Bi Pin	120-277V	5000	83	1800	50,000	160	25	48"	0.98	32
84889	T848FR12/865/BYP4/DSE/LED	12.5	Medium Bi Pin	120-277V	6500	83	1650	50,000	160	25	48"	0.98	32
84875	T836FR12/835/BYP4/DSE/LED	12	Medium Bi Pin	120-277V	3500	83	1450	50,000	160	25	36"	0.98	25
84876	T836FR12/840/BYP4/DSE/LED	12	Medium Bi Pin	120-277V	4000	83	1500	50,000	160	25	36"	0.98	25
84877	T836FR12/850/BYP4/DSE/LED	12	Medium Bi Pin	120-277V	5000	83	1550	50,000	160	25	36"	0.98	25
84878	T836FR12/865/BYP4/DSE/LED	12	Medium Bi Pin	120-277V	6500	83	1450	50,000	160	25	36"	0.98	25
84871	T824FR7/835/BYP4/DSE/LED	7	Medium Bi Pin	120-277V	3500	83	900	50,000	160	25	24"	0.98	17
84872	T824FR7/840/BYP4/DSE/LED	7	Medium Bi Pin	120-277V	4000	83	950	50,000	160	25	24"	0.98	17
84873	T824FR7/850/BYP4/DSE/LED	7	Medium Bi Pin	120-277V	5000	83	1000	50,000	160	25	24"	0.98	17
88474	T824FR7/865/BYP4/DSE/LED	7	Medium Bi Pin	120-277V	6500	83	900	50,000	160	25	24"	0.98	17

\* Contact your local rep for Project or Volume Pricing

## ProLED Linear T8 Hybrid Type A/B



Product #	Product Code	Type A Lamp Wattage	Type A System Wattage	Type B Wattage	Base Type	Voltage	Color Temp	CRI	Lumens	Useful Life	Dimmable	Beam Spread	MOL	Pkg QTY	THD	Equivalent Wattage	DLC Qualified
85000	T8FR12/835/HYB/LED	12	15.5	13	G13	120-277	3500	80	1800	50,000	NO	270	48"	1/25	<20	32	Standard
85001	T8FR12/840/HYB/LED	12	15.5	13	G13	120-277	4000	80	1900	50,000	NO	270	48"	1/25	<20	32	Standard
85002	T8FR12/850/HYB/LED	12	15.5	13	G13	120-277	5000	80	1900	50,000	NO	270	48"	1/25	<20	32	Standard

\* Contact your local rep for Project or Volume Pricing

<sup>1</sup> Specifications are based on use with normal ballast factor ballasts (0.88).  
<sup>2</sup> Useful Life is defined as the point in time at which the LED will maintain at least 70% of its initial lumens. The LED will continue to operate past this point at decreased light levels.  
<sup>3</sup> May not be compatible with all Dimming systems, Dimming performance may vary by system. Please check [www.halcolighting.com](http://www.halcolighting.com) for up-to-date dimmer compatibility information. Use on incompatible systems may shorten lamp life.  
<sup>4</sup> To view our DLC qualified products, please consult the DLC Qualified Products List at [www.designlights.org/qpl](http://www.designlights.org/qpl)