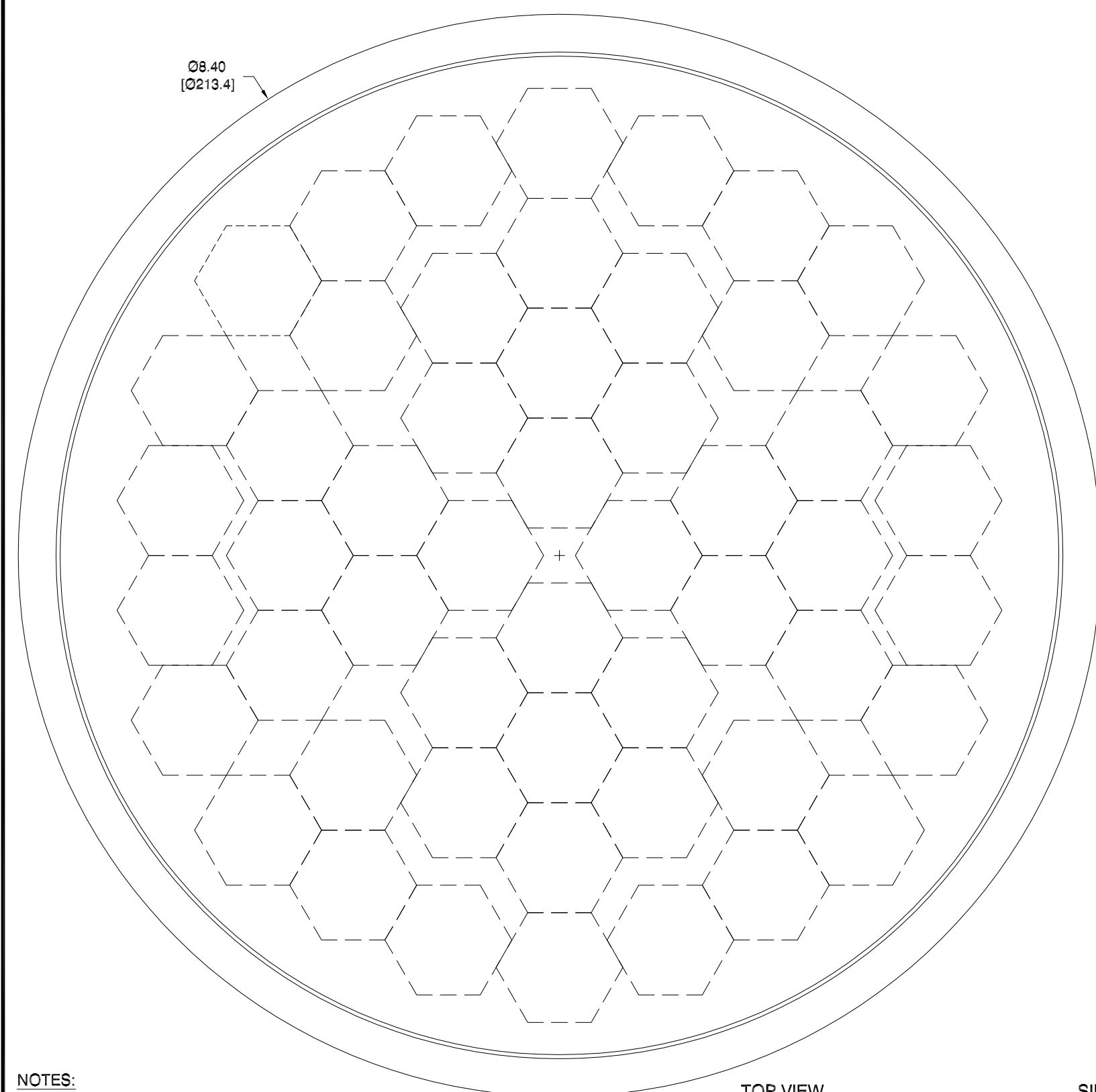
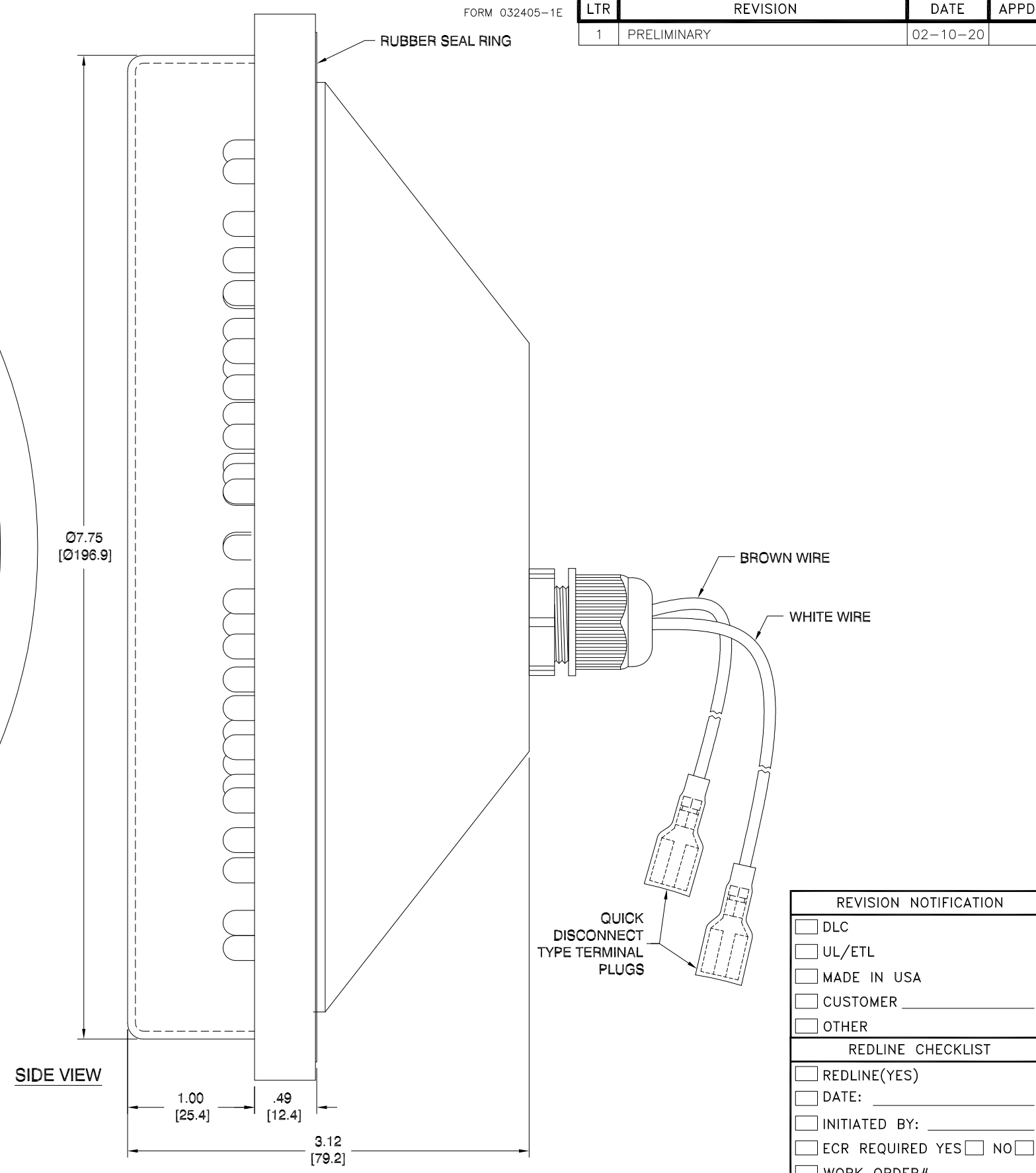


LTR	REVISION	DATE	APPD
1	PRELIMINARY	02-10-20	



TOP VIEW



SIDE VIEW

NOTES:

1. ALL DIMENSIONS ARE IN INCHES [MILLIMETERS].
2. HOUSING MATERIAL / COLOR: ABS (Acrylonitrile Butadiene Styrene) / BLACK
3. LENS MATERIAL / COLOR: UV RESISTANT POLYCARBONATE / CLEAR

ELECTRICAL-OPTICAL CHARACTERISTICS (Ta = 25°C)

LEDTRONICS PART NO.	COLOR EMITTED	INPUT VOLTAGE, V	CURRENT (A)	POWER (W)	OPERATING TEMPERATURE	LED Chip	λP nm	WEIGHT (lbs)
TRF108-OBG-120A	BLUE GREEN	120Vac	0.040 A	4.80 W	~-40°F to ~+165°F [~-40°C ~ +74°C]	InGaN	505nm	1.47 lbs.
TRF108-OER-120A	SUPER RED		0.040 A	4.80 W		AllnGaP	626nm	
TRF108-OPY-120A	SUPER YELLOW		0.037 A	4.44 W		AllnGaP	590nm	

**LED**<sup>®</sup>  
**LEDTRONICS,™ INC.**  
 23105 KASHIWA COURT  
 TORRANCE, CA 90505

**-PROPRIETARY-**  
 This document contains Proprietary information of LEDTRONICS, INC. It may not be copied, used or disclosed for any purpose without the prior express written consent of LEDTRONICS, INC.

.XXX ± .010 TOLERANCE PER ANSI-Y14.5  
 .XX ± .025 (UNLESS OTHERWISE STATED)  
 ANGLES ± 0°,30'  
 FRACT. ± 1/32

TITLE		TRF108-OXX-120A			
DWG NO	SCALE	SHEET	DATE		
TRF108-002-CUST	1:1	1 OF 1	02-10-20		
CODE IDENT NO.	DWG BY	CHK BY	QA	MFG	R&D
8Z410	GP 02-10-20		SB 02-11-20	LD 02-11-20	UF 02-11-20

REVISION NOTIFICATION

DLC

UL/ETL

MADE IN USA

CUSTOMER \_\_\_\_\_

OTHER \_\_\_\_\_

REDLINE CHECKLIST

REDLINE(YES)

DATE: \_\_\_\_\_

INITIATED BY: \_\_\_\_\_

ECR REQUIRED YES  NO

WORK ORDER# \_\_\_\_\_