

Mark 10 Powerline

MARK 10 POWERLINE VEZ1T42M2BS35M

For companies looking to make their fixed-output linear T8, 4-pin CFL, and T5/HO fluorescent systems more cost effective and sustainable, Mark 10 Powerline ballasts provide an easy solution without the need for additional control leads. Simply, (1) replace the ballast, (2) replace the switch, (3) dim the lights, that is all it takes. It's that easy to bring the convenience and flexibility of fluorescent dimming to conference rooms, private offices, auditoriums, architectural cove lighting – anywhere dimming is required.

Product data

• General Information

Lamp Type	CFTR42W/GX24Q
Number Of Lamps	1 piece/unit
Ballast Type	Dimmable Fluorescent
Base Model	VEZ1T42M2BS
Suitable For Outdoor Use	Yes
Automatic Restart	Yes

• Operating and Electrical

Input Voltage	277 V
Input Frequency	60 Hz
Total Harmonic Distortion USA	10 %
Ignition Method	Programmed Start
Crestfactor (Nom)	1.6
Ignition Time (Nom)	1.5 s
Ballast Factor (Max)	1
Ballast Factor (Min)	0.05
Power Factor (Nom)	0.98
Input Current (Nom)	0.18 A
Input Power (Max)	49 W
Input Power (Min)	10 W
Rated Lamp Power	42W W

• Wiring

Color Input Terminals	Black and White
Color Output Terminals	RED & BLU
Wire Striplength	0.375 mm
Control Wire Gauge	NA
Lamp Connection	Series
Wire Length By Color	No wires

Wire Gauge (Nom)	18AWG mm
Wire Type	Solid
Remote Wiring Configuration	No
Tandem Wiring Configuration	No
Through Wiring Configuration	No
Max Ballast-Lamp Distance Remote Wiring	No Remote
Max Ballast-Lamp Distance Tandem Wiring	NA
Max Ballast-Lamp Distance Through Wiring	NA
Connector Type	Poke-In

• Temperature

T-Case Maximum (Nom)	70 °C
----------------------	-------

• Mechanical and Housing

Housing Material	Metal
Housing	M2
Housing Dimensions	4.98" x 3.0" x 1.29"

• Approval and Application

EMC Immunity Standard	FCC Consumer
-----------------------	--------------

PHILIPS

Mark 10 Powerline

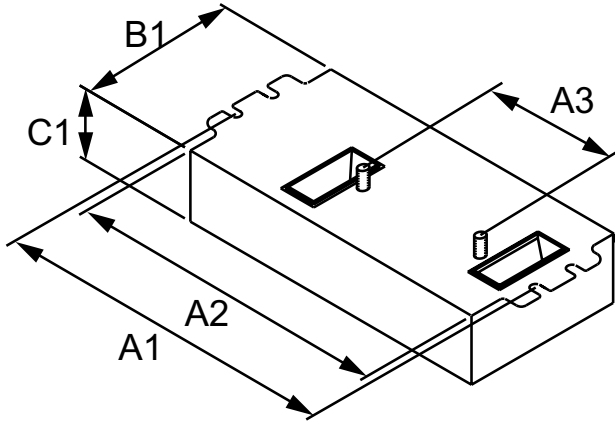
Hum And Noise Level A
 UL Recognized No

EAN/UPC - Product 781087114513
 Order code 913710250302
 Numerator - Quantity Per Pack 1
 Numerator - Packs per outer box 16
 Material Nr. (12NC) 913710250302
 Net Weight (Piece) 0.363 kg

• **Product Data**

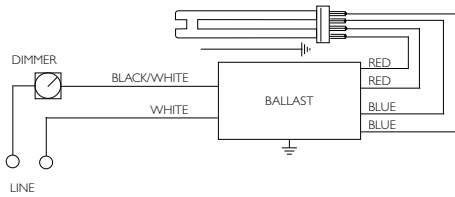
Order product name MARK 10 POWERLINE VEZ1T42M2BS35M

Dimensional drawing



ELE DIM BALLAST (1) 42W CFL (4-PIN) 277V

Product	A1	A2	A3	B1	C1
MARK 10 POWERLINE VEZ1T42M2BS35M	4.55 in	4.20 in	2.00 in	3.00 in	1.29 in



© 2015 Philips Lighting Holding B.V.
 All rights reserved.

Specifications are subject to change without notice. Trademarks are the property of Koninklijke Philips N.V. (Royal Philips) or their respective owners.

www.philips.com/lighting

2015, November 29
 data subject to change