

FEATURES & SPECIFICATIONS

INTENDED USE — The 4" and 8" Wafer™ LED Downlight with Switchable White provides high-quality light output and efficiency featuring a switch for easy color temperature adjustment - while eliminating the need for recessed housings. The innovative, slim design allows for easy retrofit, remodel or new construction installation from below the ceiling. The Wafer LED downlight is wet location listed – making it ideal for use in a breadth of outdoor residential, hospitality, commercial and multifamily applications. The LED module maintains at least 70% light output for 50,000 hours.

CONSTRUCTION — Aluminum die cast outer frame. Durable, powder coat paint to prevent rust. FT4 plenum rated cable connector to connect from module to remote driver box. IC rated driver with convenience and value of two remote selectable color temperature options, each with a setting choice to chose either 2700K, 3000K, and 3500K using the switch. The isolated driver integrated inside steel remote box with four 7/8" knockouts with slots for pryout. Suitable for pulling wires with the 12 cubic-inch wiring compartment to accommodate up to (6) 14 gauge insulated conductors, or (4) 12 gauge insulated conductors; making the Wafer LED Downlights much easier to wire in 2in/2out (plus ground) daisy-chain applications and contractor friendly.

INSTALLATION — Ideal for shallow ceiling plenum; no housing required. Steel spring clip for easy installation. 4" and 8" cut out template is provided to ensure a correct sized hole is cut into ceiling for proper installation of the trim. Size of hole should not exceed 4-1/4" for the WF4 and 8-1/4" for the WF8. Suitable for installation in t-grid and drop ceiling applications. 3" plenum space required for installation of the remote driver box.

OPTICS — Edge-lit LED technology uses light guided plate to distribute light. Polycarbonate lens provides even illumination throughout the space.

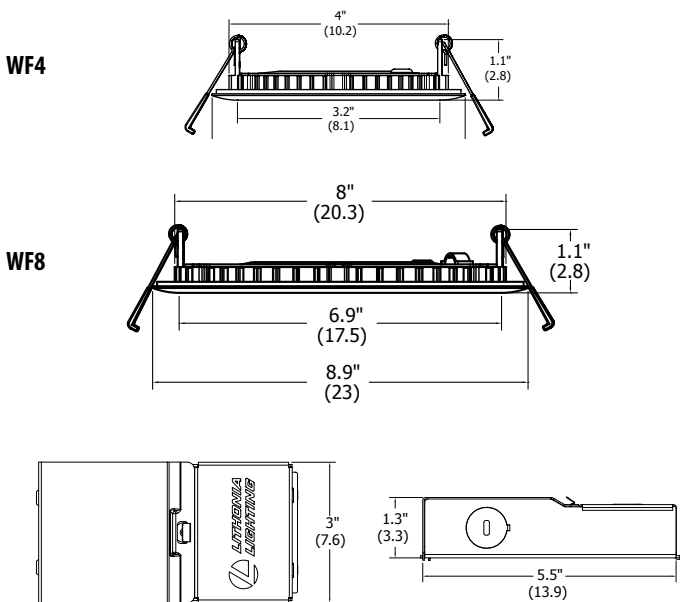
ELECTRICAL — Multi-volt (120-277V, 50/60Hz) proprietary remote LED driver/splice box, with two (2) additional low-voltage wires for 0-10v dimming, down to 10% (depending on dimmer model and application). High efficient driver with power factor > 0.9. Ambient operating temperature: -40°F (-40°C) to +104°F (+40°C). Replaces 65W incandescent (WF4), 75W incandescent (WF6) or 100W incandescent (WF8).

LISTINGS — CSA certified to US and Canadian safety standards. Suitable for wet location, covered ceiling. Air Tight certified in accordance with ASTM E283-2004. NOM Certified. Can be used to comply with California Title 24 Part 6 High Efficacy LED light Source Requirements.

WARRANTY — 5-year limited warranty. This is the only warranty provided and no other statements in this specification sheet create any warranty of any kind. All other express and implied warranties are disclaimed. Complete warranty terms located at:

www.acuitybrands.com/support/warranty/terms-and-conditions

Note: Actual performance may differ as a result of end-user environment and application. All values are design or typical values, measured under laboratory conditions at 25 °C. Specifications subject to change without notice.



Catalog Number
Notes
Type

Wafer LED Recessed Downlight

WF4/WF8 MVOLT

4" and 8" LED Switchable White Color Temperature

IC/Non-IC
New Construction/Remodel



	<i>WF4 Specifications</i>	<i>WF8 Specifications</i>
Aperture:	3.2 (8.1)	Aperture: 6.9"
Ceiling opening:	4.2 (10.7)	Ceiling opening: 8"
Overlap trim:	4.7 (12.0)	Over lamp trim: 8.9"
Height:	1.1 (2.8)	Height : 1.1"

All dimensions are inches (centimeters) unless otherwise indicated.

WF4 WF8 MVOLT Switchable White 4" or 8" LED Wafer Module

ORDERING INFORMATION

For shortest lead times, configure product using **standard options (shown in bold)**.

Example: WF4 LED 27K30K35K MVOLT 90CRI MW

WF4	LED				
Series	Lamp	CCT/W/Lumens ¹	Voltage	CRI	Finish
WF4 4" wafer-thin LED downlight	LED LED	27K30K35K 2700K/10.5W/730L 3000K/10.5W/800L 3500K/10.5W/780L	MVOLT Multi-Volt (120-277V)	90CRI 90CRI	MW Matte White

ORDERING INFORMATION

For shortest lead times, configure product using **standard options (shown in bold)**.

Example: WF8 LED 27K30K35K MVOLT 90CRI MW

WF8	LED				
Series	Lamp	CCT/W/Lumens ¹	Voltage	CRI	Finish
WF8 8" wafer-thin LED downlight	LED LED	27K30K35K 2700K/20.5W/1630L 3000K/20.5W/1800L 3500K/20.5W/1740L	MVOLT Multi-Volt (120-277V)	90CRI 90CRI	MW Matte White

Notes

1 Total system delivered lumens.

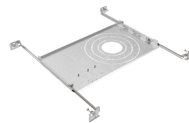
Accessories: Order as separate catalog number.

WF8643 PAN R6	Universal New Construction Pan, Retail Pack of 6
WF8643 PAN	Universal new construction pan, Unit Pack
WF4 PAN R12	4" new construction pan, retail pack of 12
WFJB U	Remodel joist bar
WFEXC6 SW3PIN FT4	3-Pin 6ft Cable
WFEXC10 SW3PIN FT4	3-Pin 10ft Cable
WFEXC20 SW3PIN FT4	3-Pin 20ft Cable
WF4GR MW	4" Wafer Goof Ring 4.2" ID x 6.2" OD
WF8GR MW	8" Wafer Goof Ring 8.1" ID x 10.1 OD

*Goof rings are made of 22 gauge steel and painted white.



WF4 Pan R12 4" new construction pan, retail pack of 12



WF8643 New Construction Pan



Remodel Joist Bar



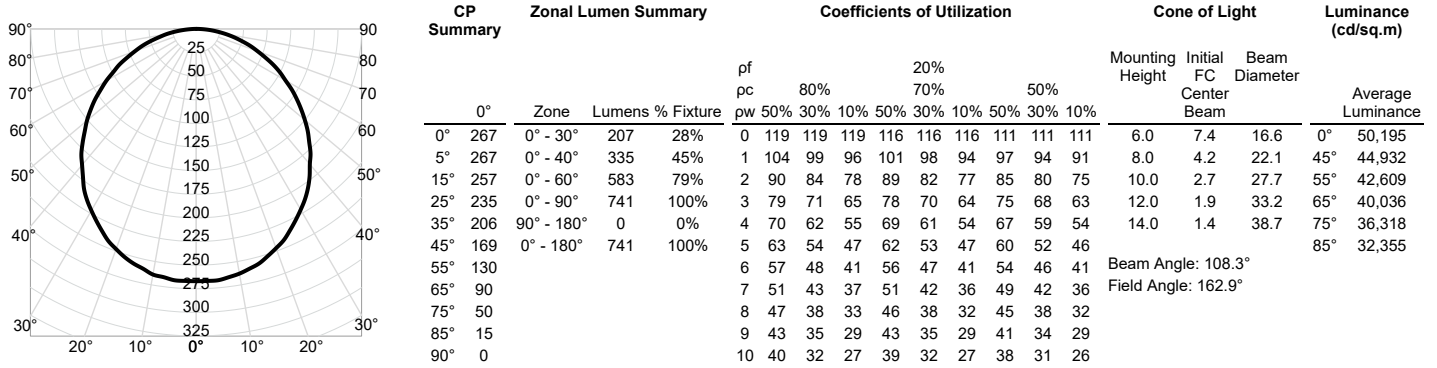
WFEXC6 Cable

WF4 WF8 MVOLT Switchable White 4" or 8" LED Wafer Module

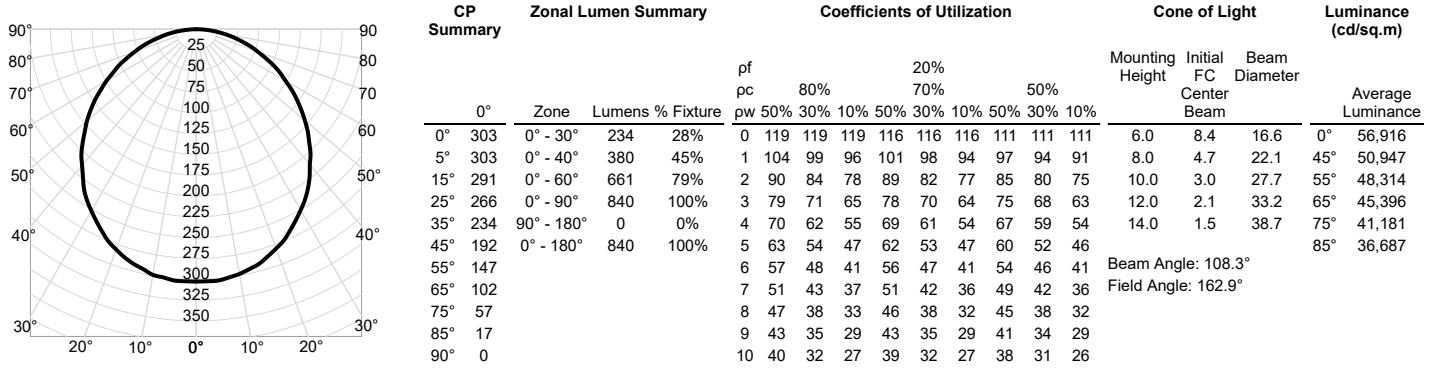
PHOTOMETRICS

Distribution Curve	Distribution Data	Output Data	Coefficient of Utilization	Illuminance Data at 30" Above Floor for a Single Luminaire
--------------------	-------------------	-------------	----------------------------	--

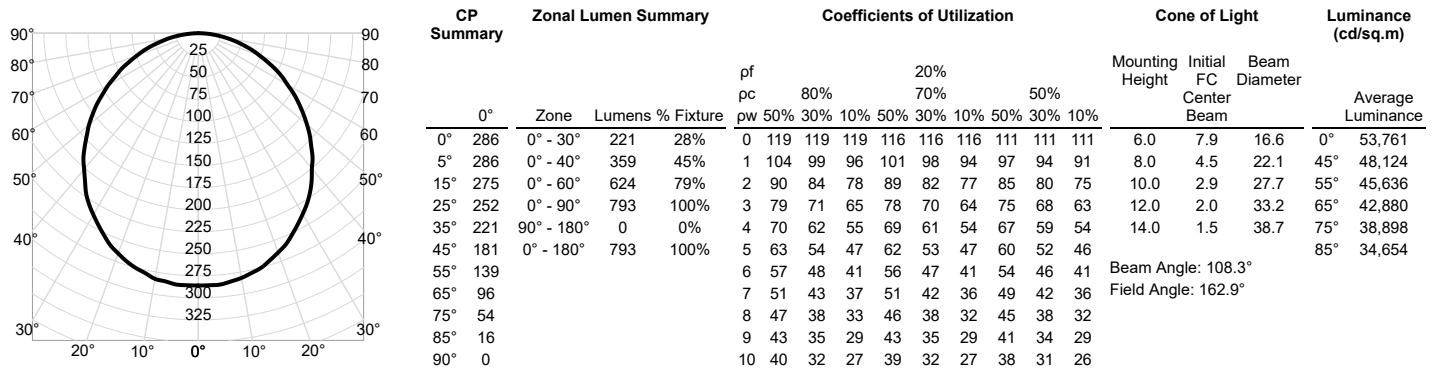
WF4 LED 27K30K35K MVOLT 90CRI 2700K Input Watts: 10.7, Delivered Lumens: 741, LPW: 69.3, S/MH: 1.23, Test No: ISF 36826P101



WF4 LED 27K30K35K MVOLT 90CRI 3000K Input Watts: 10.1, Delivered Lumens: 840, LPW: 83.2, S/MH: 1.23, Test No: ISF 36826P102



WF4 LED 27K30K35K MVOLT 90CRI 3500K Input Watts: 10.4, Delivered Lumens: 793, LPW: 76.3, S/MH: 1.23, Test No: ISF 36826P103



WF4 WF8 MVOLT Switchable White 4" or 8" LED Wafer Module

ENERGY DATA

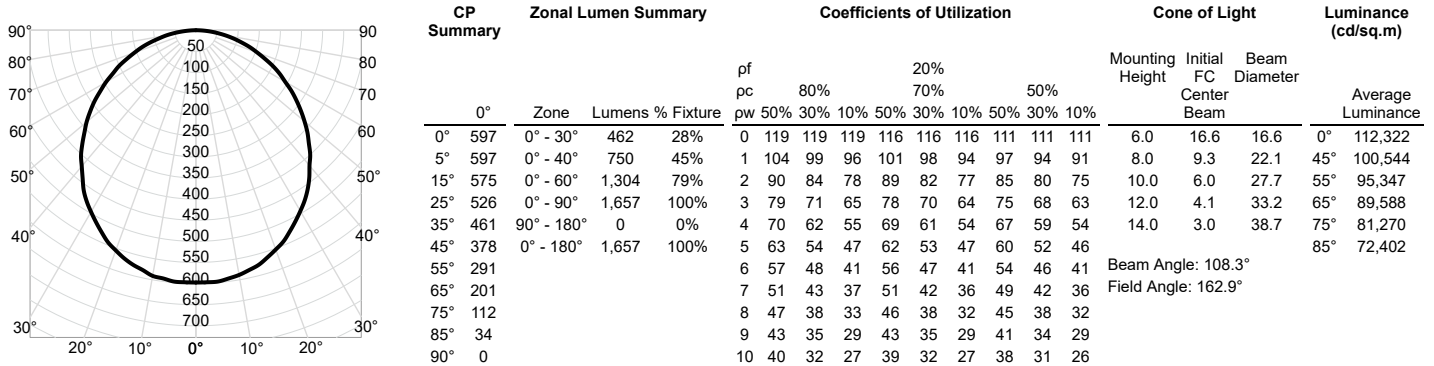
WF4 LED 27K30K35K MVOLT			
Color Temperature	2700K	3000K	3500K
Lumens	730	800	780
CRI	90	90	90
Rated wattage	10.7	10.1	10.4
Lu/Watts	68.2	79.2	75.0
Min. starting temp	-40°C (-40°F)	-40°C (-40°F)	-40°C (-40°F)
EMI/RFI	FCC Title 47 CFR, Part 15, Class B	FCC Title 47 CFR, Part 15, Class B	FCC Title 47 CFR, Part 15, Class B
Sound rating	Class A Standards	Class A Standards	Class A Standards
Input voltage	120V	120V	120V
Min. power factor	0.97	0.97	0.97
Input frequency	50/60 Hz	50/60 Hz	50/60 Hz
Input power	120V	120V	120V
Input current	0.09A	0.09A	0.09A

WF4 WF8 MVOLT Switchable White 4" or 8" LED Wafer Module

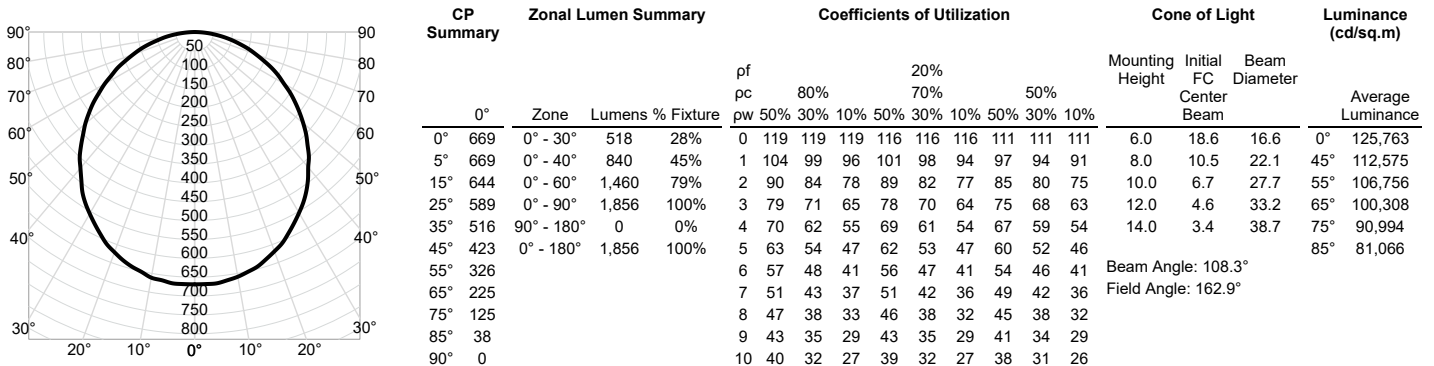
PHOTOMETRICS

Distribution Curve	Distribution Data	Output Data	Coefficient of Utilization	Illuminance Data at 30" Above Floor for a Single Luminaire
--------------------	-------------------	-------------	----------------------------	--

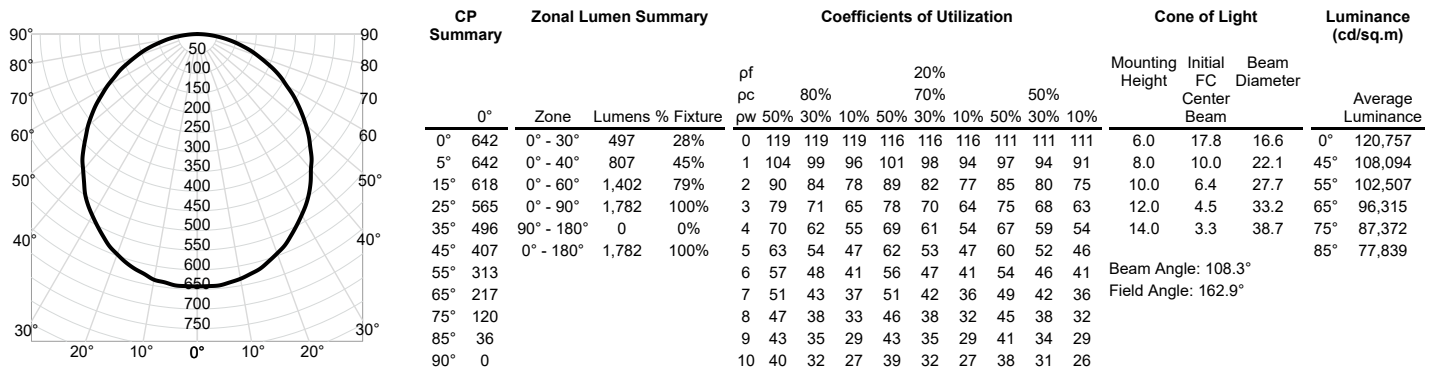
WF8 LED 27K30K35K MVOLT 90CRI 2700K Input Watts: 20.7, Delivered Lumens: 1657, LPW: 80.0, S/MH: 1.23, Test No: ISF 36826P113



WF8 LED 27K30K35K MVOLT 90CRI 3000K Input Watts: 19.8, Delivered Lumens: 1856, LPW: 93.7, S/MH: 1.23, Test No: ISF 36826P114



WF8 LED 27K30K35K MVOLT 90CRI 3500K Input Watts: 20.8, Delivered Lumens: 1782, LPW: 85.7, S/MH: 1.23, Test No: ISF 36826P115



WF4 WF8 MVOLT Switchable White 4" or 8" LED Wafer Module

ENERGY DATA

WF8 LED 27K30K35K MVOLT			
Color Temperature	2700K	3000K	3500K
Lumens	1630	1800	1740
CRI	90	90	90
Rated wattage	20.7	19.8	20.8
Lu/Watts	78.7	90.9	83.7
Min. starting temp	-40°C (-40°F)	-40°C (-40°F)	-40°C (-40°F)
EMI/RFI	FCC Title 47 CFR, Part 15, Class B	FCC Title 47 CFR, Part 15, Class B	FCC Title 47 CFR, Part 15, Class B
Sound rating	Class A Standards	Class A Standards	Class A Standards
Input voltage	120V	120V	120V
Min. power factor	0.98	0.98	0.98
Input frequency	50/60 Hz	50/60 Hz	50/60 Hz
Input power	120V	120V	120V
Input current	0.17A	0.17A	0.17A

WF4 WF8 MVOLT Switchable White 4" or 8" LED Wafer Module

LIGHTING PERFORMANCE DATA

WF4



LIGHTING PERFORMANCE DATA DONNÉES SUR LE RENDEMENT DE L'ÉCLAIRAGE	
Light Appearance (CCT) Aspect de la lumière (CCT)	
2700K soft white blanc doux	
730 lumens 70 lumens per watt	
3000K warm white blanc chaud	
800 lumens 76 lumens per watt	
3500K neutral white blanc neutre	
780 lumens 74 lumens per watt	
Watts	10.5
Color Accuracy (CRI) Précision des couleurs (CRI)	90

WF8



LIGHTING PERFORMANCE DATA DONNÉES SUR LE RENDEMENT DE L'ÉCLAIRAGE	
Light Appearance (CCT) Aspect de la lumière (CCT)	
2700K soft white blanc doux	
1630 lumens 82 lumens per watt	
3000K warm white blanc chaud	
1800 lumens 90 lumens per watt	
3500K neutral white blanc neutre	
1740 lumens 87 lumens per watt	
Watts	20.5
Color Accuracy (CRI) Précision des couleurs (CRI)	90