

## FEATURES & SPECIFICATIONS

**INTENDED USE** — For wall or ceiling mounting, vertical or horizontal. The WL combines digital LED lighting and controls technologies with high-performance optical design to offer the most advanced wall-mount luminaire for general ambient lighting applications. High-efficacy light engine delivers long life and excellent color, ensuring a superior quality lighting installation that is highly efficient and sustainable.

**CONSTRUCTION** — Housing is roll formed from code-gauge steel.

Refractor is retained in die cast ends providing secure installation and easy maintenance.

Decorative die-cast end caps provide added durability.

Finish: End caps are post-painted in white polyester powder coat for smooth finish. Post-painted channel available by selecting PAF option.

**OPTICS** — Impact modified linear faceted refractor. Optically engineered for superior light distribution and maximum efficacy.

Crescent-shape linear faceted refractor system obscures and integrates individual LED images and uniformly washes fixture surface with light.

**ELECTRICAL** — Long-life LEDs, coupled with high-efficiency drivers, provide superior quantity and quality of illumination for extended service life. 90% LED lumen maintenance at 60,000 hours (L90/60,000). The LEDs have a CRI of 82.

eldoLED driver options deliver choice of dimming range and choice for control, while assuring flicker-free, low-current inrush, 89% efficiency and low EMI.

Driver disconnect provided where required to comply with US and Canadian codes.

Optional nLight® embedded controls continuously monitor system performance and allow for constant lumen management function.

Lumen Management: Unique lumen management system (option N80) provides onboard intelligence that actively manages the LED light source so that constant lumen output is maintained over the system life, preventing energy waste created by the traditional practice of over-lighting.

**SENSOR — Integrated sensor (individual control):** Sensor Switch MSD7 (Passive Infrared (PIR)) integrated occupancy sensor photocell allows the luminaire to power off when the space is unoccupied. See page 4 for more details on the integrated sensor.

**Integrated Sensor (nLight Wired Networking):** The sensor is nLight-enabled, meaning it has the ability to communicate over an nLight network. When wired using CAT-5 cabling with other nLight-enabled sensors, power packs, or WallPods, an nLight control zone is created. Once linked to a Gateway, directly or via a Bridge, the zone becomes capable of remote status monitoring and control via SensorView software. See page 4 for the nLight sensor options.

**Integrated Smart Sensor (nLight AIR Wireless Platform):** The RES7 sensor is nLight AIR enabled, meaning it has the ability to communicate over the wireless nLight control platform. It is available with an automatic dimming photocell, and either a digital PIR or a dual technology occupancy sensor. It pairs to other luminaires and wall switches through our mobile app, CLAIRITY, which allows for simple sensor adjustment. See page 4 for more details on the Integrated Smart Sensor.

**LISTINGS** — CSA certified to meet U.S. and Canadian standards. Suitable for damp location.

Patents pending. DesignLights Consortium® (DLC) qualified product. Not all versions of this product may be DLC qualified. Please check the DLC Qualified Products List at [www.designlights.org/QPL](http://www.designlights.org/QPL) to confirm which versions are qualified.

**BUY AMERICAN ACT** — Product with the BAA option is assembled in the USA and meets the Buy America(n) government procurement requirements under FAR, DFARS and DOT regulations. Please refer to [www.acuitybrands.com/buy-american](http://www.acuitybrands.com/buy-american) for additional information.

**WARRANTY** — 5-year limited warranty. This is the only warranty provided and no other statements in this specification sheet create any warranty of any kind. All other express and implied warranties are disclaimed. Complete warranty terms located at: [www.acuitybrands.com/support/warranty/terms-and-conditions](http://www.acuitybrands.com/support/warranty/terms-and-conditions)

**NOTE:** Actual performance may differ as a result of end-user environment and application.

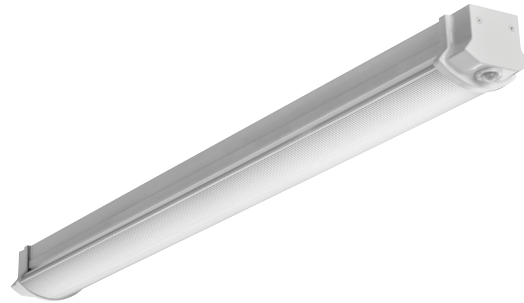
All values are design or typical values, measured under laboratory conditions at 25 °C.

Specifications subject to change without notice.

Catalog Number
Notes
Type

# W SERIES

Wall bracket & Surface Mount LED



# WL4

4'  
LED



Embed nLight® controls today. Prepare for tomorrow.

### Now

- User-friendly install
- Enhanced energy savings
- Code compliance

### Tomorrow

- Scalability
- Space configuration
- Future-ready

## A+ Capable Luminaire

This item is an A+ capable luminaire, which has been designed and tested to provide consistent color appearance and out-of-the-box control compatibility with simple commissioning.

- All configurations of this luminaire meet the Acuity Brands' specification for chromatic consistency
- This luminaire is part of an A+ Certified solution for nLight® or XPoint™ Wireless control networks when ordered with drivers marked by a shaded background\*

To learn more about A+, visit [www.acuitybrands.com/aplus](http://www.acuitybrands.com/aplus).

\*See ordering tree for details

# WL4 Wall Bracket & Surface Mount LED



A+ Capable options indicated by this color background.

## ORDERING INFORMATION

Lead times will vary depending on options selected. Consult with your sales representative.

**Example:** WL4 30L EZ1 LP840

WL4					
Series	Lumens <sup>1</sup>	Voltage	Driver	Color temperature	nLight Interface
WL4 4' wall-mount LED	20L 2000 lumens	(blank) MVOLT	EZ1 eldoLED dims to 1%, 0-10V	LP830 3000 K	<b>nLight Wired</b> (blank) No nLight® interface N80 nLight® with 80% lumen management N80EMG nLight® with 80% lumen management. For use with generator supply EM power <sup>4</sup> N100 nLight® without lumen management N100EMG nLight® without lumen management. For use with generator supply EM power <sup>4</sup> <b>nLight Wireless</b> (blank) No nLight® interface NLTAIR2 nLight® Air Generation 2 enabled <sup>5</sup>
	30L 3000 lumens	347 347V	EZB eldoLED dims to dark, 0-10V	LP835 3500 K	
	40L 4000 lumens		GZ1 Dims to 1% (0-10V dimming) <sup>2</sup>	LP840 4000 K	
			GZ10 Dims to 10% (0-10V dimming) <sup>2</sup>	LP850 5000 K	
			SLD Step-level dimming <sup>3</sup>		

Control <sup>6</sup>	Standby mode <sup>9</sup>	Options	Finish <sup>12</sup>
<b>nLight Wired</b> (blank) No nLight control NES7 nLight® nES 7 PIR integral occupancy sensor <sup>7</sup> NESPDT7 nLight® nES PDT 7 dual technology integral occupancy control <sup>7</sup> NES7ADCX nLight® nES 7 ADCX PIR integral occupancy sensor with automatic dimming photocell <sup>7</sup>	(blank) Fixture turns off when unoccupied DIM10 Fixture dims to approximately 10% light output when unoccupied DIM50 Fixture dims to approximately 50% light output when unoccupied NOC NOC Occupancy sensor disabled <sup>10</sup>	EL7L 700 nominal lumen battery pack (Noncompliant with CA T20) <sup>11</sup> EL14L 1400 nominal lumen battery pack (Noncompliant with CA T20) <sup>11</sup> E10WLCP EM Self-Diagnostic battery pack, 10W Constant Power, Certified in CA Title 20 MAEDBS <sup>11</sup> SC Surface conduit end cap provisions BAA Buy America(n) Act Compliant BDP Factory Installed Ballast Disconnect Plug	(blank) White PAF Paint After Fabrication White
<b>nLight Wireless</b> RES7 nLight AIR control with PIR integral occupancy sensor and automatic dimming photocell RES7PDT nLight AIR control with PDT dual technology integral occupancy sensor and automatic dimming photocell			
<b>Individual Control</b> MSD7 Sensor Switch® MSD 7 PIR Integral Occupancy Control <sup>8</sup>			

### Notes

- 1 Approximate lumen output.
- 2 Not available with any Controls or sensor options.
- 3 Not available with nLight Interface or Controls.
- 4 nLight EMG option requires a connection to existing nLight network. Power is provided from a separate N80 or N100 enabled fixture
- 5 Must order with RES7, RES7PDT, or module. Only available with EZ1 driver.
- 6 See sensor options on page 4.
- 7 Requires N80, N100, N80EMG, or N100EMG.
- 8 Not available with nLight options or EZB.
- 9 Not available with nLight Wireless sensor options.
- 10 Can only be ordered in conjunction with EZ1, NLTAIR2, RES7/RES7PDT. Occupancy sensor disabled at factory but can be re-enabled upon commissioning.
- 11 Not available with 347V.
- 12 For additional paint finishes, refer to [Architectural Colors](#).

# WL4 Wall Bracket & Surface Mount LED

## nLight® Wired Control Accessories:

Order as separate catalog number. Visit [www.acuitybrands.com/products/controls/nlight](http://www.acuitybrands.com/products/controls/nlight).

WallPod stations	Model number	Occupancy sensors	Model number
On/Off	nPODM [color]	Small motion 360°, ceiling (PIR / dual tech)	nCM 9 RJB / nCM PDT 9 RJB
On/Off & raise/lower	nPODM DX [color]	Large motion 360°, ceiling (PIR / dual tech)	nCM10 RJB / nCM PDT 10 RJB
Graphic touchscreen	nPOD GFX [color]	Wall switch with raise/lower	nWSX PDT LV DX [color]
Photocell controls	Model number	Cat-5 cable (plenum rated)	Model number
Full range dimming	nCM ADCX RJB	10' cable	CAT5 10FT J1
		30' cable	CAT5 30FT J1

## nLight® AIR Control Accessories:

Order as separate catalog number. Visit [www.acuitybrands.com/products/controls/nlightair](http://www.acuitybrands.com/products/controls/nlightair).

Wall switches	Model number
On/Off single pole	rPODB [color] G2
On/Off two pole	rPODB 2P [color] G2
On/Off & raise/lower single pole	rPODB DX [color] G2
On/Off & raise/lower two pole	rPODB 2P DX [color] G2
On/Off & raise/lower single pole	rPODBZ DX WH G2

## ORDERING INFORMATION

rCMS		Example: RCMS PDT 10 AR G2				
Series/Detection	Occupancy Detection	Lens (Required)		Operating Mode		Generation
RCMS nLight AIR occupancy and daylight sensor	(blank) PIR Detection PDT Dual Tech PIR/ Microphonics	10	Large Motion/Extended Range 360°	(blank)	None	G2
		9	Small Motion/Extended Range 360°	AIR	Auxiliary Relay	Generation 2 compatibility
		6	High Bay 360° Lens			



RCMS

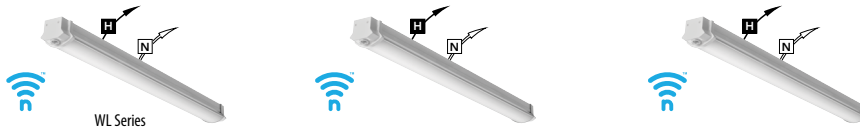


# WL4 Wall Bracket & Surface Mount LED

## nLight Platform

nLight embedded fixtures offer:	Customers get:
Manual Dimming	Convenience and visual comfort for occupants
Motion Sensing and/or Daylight Harvesting	Energy savings and code compliance
Fixture or Group Level Control	Ability to configure lighting to the space requirements
Flexibility	Ease of fixture moves, adds and changes
Wireless Wall Switch (nLight AIR Only)	Ease and flexibility of placement
Astronomical and Time of Day Scheduling	Energy savings and building security
Scalable Solution	nLight controls to grow with your business
Future-Ready	nLight platform to set foundation for future upgrades and capabilities

## nLight Air Wireless

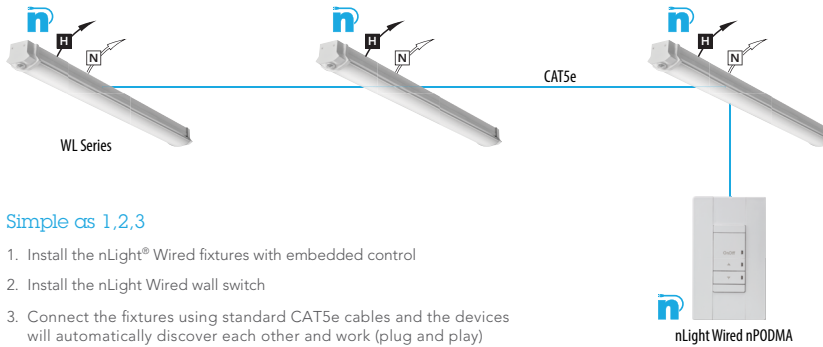


### Simple as 1,2,3

1. Install the nLight® AIR fixtures with embedded smart sensor
2. Install the wireless battery-powered wall switch
3. With CLAIRITY app, pair the fixtures with the wall switch and if desired, customize the sensor settings for the desired outcome



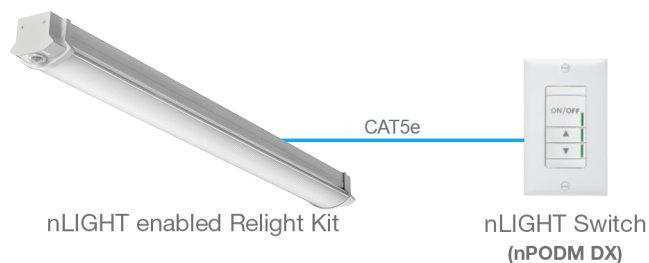
## nLight Wired Networking



### Simple as 1,2,3

1. Install the nLight® Wired fixtures with embedded control
2. Install the nLight Wired wall switch
3. Connect the fixtures using standard CAT5e cables and the devices will automatically discover each other and work (plug and play)

### Basic nLight Zone



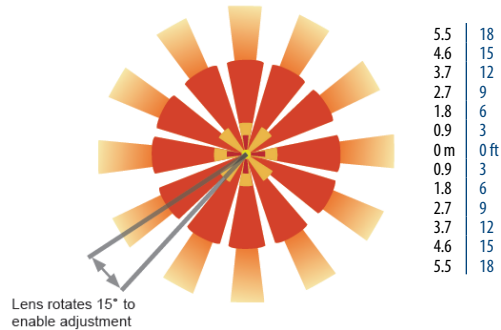
# WL4 Wall Bracket & Surface Mount LED

Sensor Options					
Option	Automatic Dimming Photocell	Occupancy Sensing		nLight Wired Networking	nLight AIR Networking
		PIR	PDT		
MSD7		X			
NES7		X		X	
NES7ADCX	X	X		X	
NESPDT7			X	X	
RES7	X	X			X
RES7PDT	X	X	X		X

## Sensor Coverage Pattern Mini 360° Lens

- Recommended for walking motion detection from mounting heights between 8 ft (2.44 m) and 20 ft (6.10 m)
- Initial detection of walking motion along sensor axes at distances of 2x the mounting height up to 15 ft (4.57 m) and 1.75x up to 20 ft (6.10 m).
- Provides 12 ft (3.66 m) radial detection of small motion when mounted at 9 ft (2.74 m)
- Initial detection will occur earlier when walking across sensor's field of view than when walking directly at sensor

### 9 FT Mounting



### Integrated Sensor with Individual Control

The MSD7 PIR occupancy sensor is ideal for areas without obstructions and where daylight harvesting may be desired. Suggested applications include, but not limited to, hallways, corridors, storage rooms, and breakrooms or other areas where people are typically moving.

### nLight Wired Networking

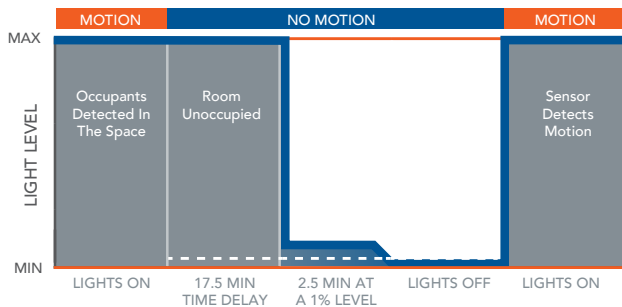
The nES 7 is ideal for small rooms without obstructions or areas with primarily walking motion. Ideal areas include hallways, corridors, storage rooms, and breakrooms. Additionally, the NES7ADCX includes an integrated photocell, which enables daylight harvesting controls.

For areas like restrooms, private offices, open offices, conference rooms or any space with obstructions, the nES PDT 7 dual technology sensor is recommended. The nES PDT 7 utilizes both PIR (passive infrared) and Microphonics technologies to detect occupancy.

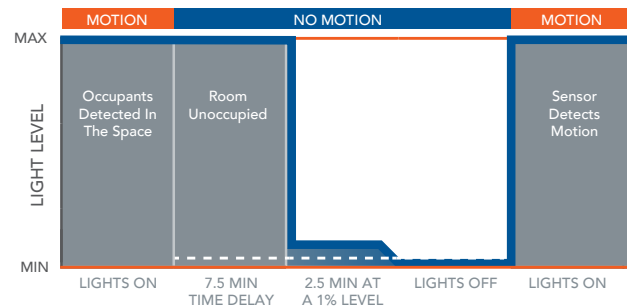
### nLight AIR Wireless

nLight AIR is the ideal solution for retrofit or new construction spaces where adding additional wiring can be labor intensive and costly. nLight AIR is available with or without an integral sensor. The integrated RES7 or RES7PDT smart sensors are part of each luminaire in the nLight AIR network, which can be grouped to control multiple luminaires. The granularity of control with the digital PIR occupancy detection and daylight sensing makes a great solution for any application.

### Sequence of Operation



### Sequence of Operation



\*The presetting on the automatic dimming photocell is 5fc.

# WL4 Wall Bracket & Surface Mount LED

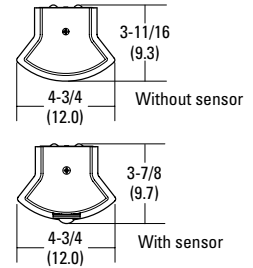
Performance Data			
Lumen package	Input watts	Lumens	LPW
20L LP830	18.7	2050	110
20L LP835	18.7	2152	115
20L LP840	18.7	2255	121
20L LP850	18.7	2410	129
30L LP830	28.2	2952	105
30L LP835	28.2	3095	110
30L LP840	28.2	3251	115
30L LP850	28.2	3239	115
40L LP830	39.5	3927	99
40L LP835	39.5	4124	104
40L LP840	39.5	4325	110
40L LP850	39.5	4571	116

## DIMENSIONS

All dimensions are inches (centimeters) unless otherwise noted.

### Specifications

Length: with sensor - 50-15/16 (129.40)  
 without sensor - 46-13/16 (118.90)  
 Height: with sensor - 3-7/8 (9.7)  
 without sensor - 3-11/16 (9.3)  
 Width: 4-3/4 (12.1)



### How to Calculate Estimated Lumens in Emergency Mode

Use the formula below to estimate the delivered lumens in emergency mode

$$\text{Delivered Lumens} = 1.25 \times P \times \text{LPW}$$

P = Output power of emergency driver. P = 10W for E10WLCP option.

LPW = Lumen per watt rating of the luminaire. This information is available on the ABL luminaire spec sheet.

LPW = Lumen per watt rating of the luminaire. LPW information available in Performance Data section.

## MOUNTING DATA

For unit installation; surface ceiling or wall mounting.

