

**XFR**

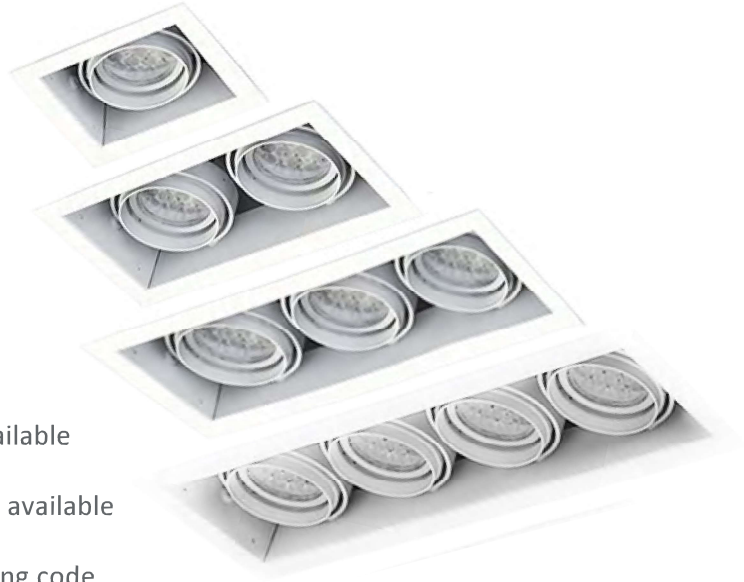
X-SERIES | XM24  
FULLY RECESSED MULTIPLE

PROJECT \_\_\_\_\_

TYPE \_\_\_\_\_

SPECIFICATION \_\_\_\_\_

- 120 V standard
- 0-10 V\*, Triac and ELV dimming
- 50,000 hours (L70)
- Integrated driver
- RoHs-compliant
- Contain no lead or mercury
- Certified to UL standards for dry locations
- Modular individually specifiable optics
- Modules are field-replaceable for easy maintenance and design changes; no tools needed
- Field- adjustable gimbal rings for hot aiming
- Designed for new construction ceilings only.
- Rated for IC and non-IC use; spray foam rated\* option available
- VioLight and \*MonoWhite color rendering enhancements available
- \*90+ High CRI available  
To order, replace 'K' in CCT designation with 'h' in ordering code



\*Consult factory for lead time and availability

## XFR11

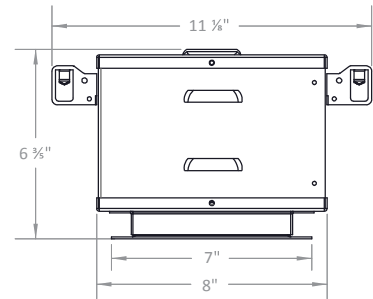
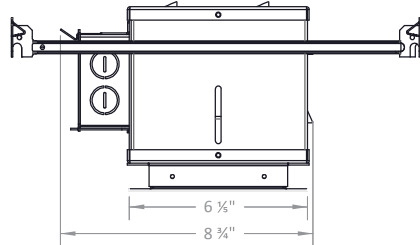
X-SERIES | XM24 | 1-HEAD  
FULLY RECESSED MULTIPLE

PROJECT \_\_\_\_\_

TYPE \_\_\_\_\_

SPECIFICATION \_\_\_\_\_

- Weight without module: 4 ⅜ lb
- Ceiling Cut-Out: 6 ⅜" x 5 ¼"



### Ordering Information

Example: XFR11/Xm24/25/30K/2400/WH/WH/SL

Fixture	Module	Beam Spread	CCT / Lumens	Options + Accessories
XFR11	Xm24	COB-optic	25K* / 1400	SFR - Spray Foam Rated*
		15c	27K / 1550	010 - 0-10 V Dimming*
		25c	30K / 1600	HL - Honeycomb Louver
		40c	30m* / 1600	SL - Linear Spread
		60c	35K* / 1600	SP - Prismatic Spread
			35m* / 1600	SS - Solite Spread
			40K* / 1600	More Accessories Available
			25K* / 2000	
			27K / 2000	
			30K / 2000	
			30m* / 2000	
			35K* / 2000	
			35m* / 2000	
			40K* / 2000	
		Multi-optic	30v / 1850	
		15	27K / 2300	
		25	30K / 2400	
		40	35K* / 2400	
		60	40K* / 2400	
			27K / 3000	
			30K / 3000	
			35K* / 3000	
			40K* / 3000	

#### Trim Finish

Die-cast, Powder Coated  
 WH / WH - White Module, Interior + Flange  
 BK / BK - Black Module, Interior + Flange  
 BK / WH\* - Black Module + Interior, White Flange  
 PW / PW\* - Perfect White Module, Interior + Flange  
 BK / PW\* - Black Module + Interior, Perfect White Flange

\*Consult factory for lead time and availability

## XFR12

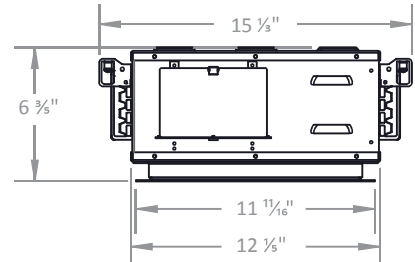
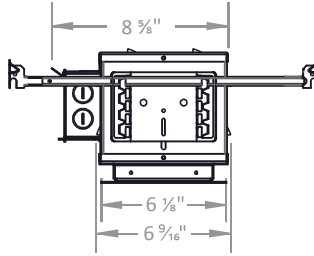
X-SERIES | XM24 | 2-HEAD  
FULLY RECESSED MULTIPLE

PROJECT \_\_\_\_\_

TYPE \_\_\_\_\_

SPECIFICATION \_\_\_\_\_

- Weight without module: 7 lb
- Ceiling Cut-Out: 11" x 5 ¼"



### Ordering Information

Example: XFR12/Xm24/25-25/30K/2400/WH/WH/SL-SL

		1 - 2				1 - 2	
Fixture	Module	Beam Spread	CCT / Lumens	Options + Accessories			
XFR12	Xm24	COB-optic	25K* / 1400	SFR - Spray Foam Rated*			
		15c	27K / 1550	O10 - 0-10 V Dimming*			
		25c	30K / 1600	HL - Honeycomb Louver			
		40c	30m* / 1600	SL - Linear Spread			
		60c	35K* / 1600	SP - Prismatic Spread			
			35m* / 1600	SS - Solite Spread			
			40K* / 1600	More Accessories Available			
			25K* / 2000				
			27K / 2000				
			30K / 2000				
			30m* / 2000				
			35K* / 2000				
			35m* / 2000				
			40K* / 2000				
			27K / 3000				
			30K / 3000				
			35K* / 3000				
			40K* / 3000				
		Multi-optic	30v / 1850				
		15	27K / 2300				
		25	30K / 2400				
		40	35K* / 2400				
		60	40K* / 2400				
			27K / 3000				
			30K / 3000				
			35K* / 3000				
			40K* / 3000				
				Trim Finish			
				Die-cast, Powder Coated			
				WH / WH - White Module, Interior + Flange			
				BK / BK - Black Module, Interior + Flange			
				BK / WH* - Black Module + Interior, White Flange			
				PW / PW* - Perfect White Module, Interior + Flange			
				BK / PW* - Black Module + Interior, Perfect White Flange			

\*Consult factory for lead time and availability

## XFR13

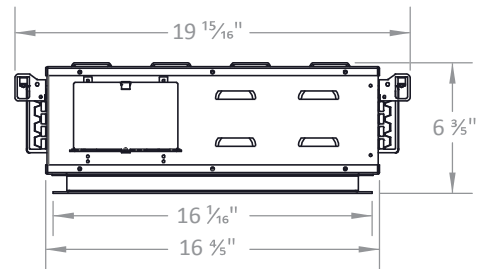
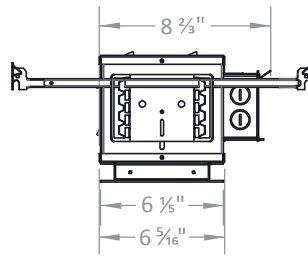
X-SERIES | XM24 | 3-HEAD  
FULLY RECESSED MULTIPLE

PROJECT \_\_\_\_\_

TYPE \_\_\_\_\_

SPECIFICATION \_\_\_\_\_

- Weight without module: 8 lb
- Ceiling Cut-Out: 15 1/2" x 5 1/4"



### Ordering Information

Example: XFR13/Xm24/25-25-25/30K/2400/WH/WH/SL-SL-SL

		1	2	3				1	2	3
<b>Fixture</b> XFR13	<b>Module</b> Xm24	<b>Beam Spread</b>			<b>CCT / Lumens</b>					<b>Options + Accessories</b>
		COB-optic			25K* / 1400					SFR - Spray Foam Rated*
		15c			27K / 1550					010 - 0-10 V Dimming*
		25c			30K / 1600					HL - Honeycomb Louver
		40c			30m* / 1600					SL - Linear Spread
		60c			35K* / 1600					SP - Prismatic Spread
					35m* / 1600					SS - Solite Spread
					40K* / 1600					More Accessories Available
					25K* / 2000					
					27K / 2000					
					30K / 2000					
					30m* / 2000					
					35K* / 2000					
					35m* / 2000					
					40K* / 2000					
					25K* / 2000					
					27K / 2000					
					30K / 2000					
					30m* / 2000					
					35K* / 2000					
					35m* / 2000					
					40K* / 2000					
					25K* / 2000					
					27K / 2000					
					30K / 2000					
					30m* / 2000					
					35K* / 2000					
					35m* / 2000					
					40K* / 2000					
					25K* / 2000					
					27K / 2000					
					30K / 2000					
					30m* / 2000					
					35K* / 2000					
					35m* / 2000					
					40K* / 2000					
					25K* / 2000					
					27K / 2000					
					30K / 2000					
					30m* / 2000					
					35K* / 2000					
					35m* / 2000					
					40K* / 2000					
					25K* / 2000					
					27K / 2000					
					30K / 2000					
					30m* / 2000					
					35K* / 2000					
					35m* / 2000					
					40K* / 2000					
					25K* / 2000					
					27K / 2000					
					30K / 2000					
					30m* / 2000					
					35K* / 2000					
					35m* / 2000					
					40K* / 2000					
					25K* / 2000					
					27K / 2000					
					30K / 2000					
					30m* / 2000					
					35K* / 2000					
					35m* / 2000					
					40K* / 2000					
					25K* / 2000					
					27K / 2000					
					30K / 2000					
					30m* / 2000					
					35K* / 2000					
					35m* / 2000					
					40K* / 2000					
					25K* / 2000					
					27K / 2000					
					30K / 2000					
					30m* / 2000					
					35K* / 2000					
					35m* / 2000					
					40K* / 2000					
					25K* / 2000					
					27K / 2000					
					30K / 2000					
					30m* / 2000					
					35K* / 2000					
					35m* / 2000					
					40K* / 2000					
					25K* / 2000					
					27K / 2000					
					30K / 2000					
					30m* / 2000					
					35K* / 2000					
					35m* / 2000					
					40K* / 2000					
					25K* / 2000					
					27K / 2000					
					30K / 2000					
					30m* / 2000					
					35K* / 2000					
					35m* / 2000					
					40K* / 2000					
					25K* / 2000					
					27K / 2000					
					30K / 2000					
					30m* / 2000					
					35K* / 2000					
					35m* / 2000					
					40K* / 2000					
					25K* / 2000					
					27K / 2000					
					30K / 2000					
					30m* / 2000					
					35K* / 2000					
					35m* / 2000					
					40K* / 2000					
					25K* / 2000					
					27K / 2000					
					30K / 2000					
					30m* / 2000					
					35K* / 2000					
					35m* / 2000					
					40K* / 2000					
					25K* / 2000					
					27K / 2000					
					30K / 2000					
					30m* / 2000					
					35K* / 2000					
					35m* / 2000					
					40K* / 2000					
					25K* / 2000					
					27K / 2000					
					30K / 2000					
					30m* / 2000					
					35K* / 2000					
					35m* / 2000					
					40K* / 2000					
					25K* / 2000					
					27K / 2000					
					30K / 2000					
					30m* / 2000					
					35K* / 2000					
					35m* / 2000					
					40K* / 2000					
					25K* / 2000					
					27K / 2000					
					30K / 2000					
					30m* / 2000					
					35K* / 2000					
					35m* / 2000					
					40K* / 2000					
					25K* / 2000					
					27K / 2000					
					30K / 2000					
					30m* / 2000					
					35K* / 2000					
					35m* / 2000					
					40K* / 2000					
					25K* / 2000					
					27K / 2000					
					30K / 2000					

## XFR14

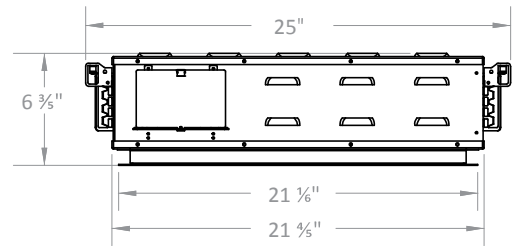
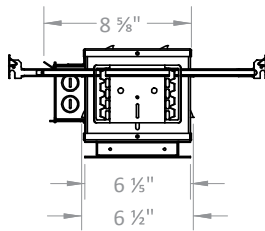
X-SERIES | XM24 | 4-HEAD  
FULLY RECESSED MULTIPLE

PROJECT \_\_\_\_\_

TYPE \_\_\_\_\_

SPECIFICATION \_\_\_\_\_

- Weight without module: 10.8 lb
- Ceiling Cut-Out: 20" x 5 1/4"



### Ordering Information

Example: XFR14/Xm24/25-25-25-25/30K/2400/WH/WH/SL-SL-SL-SL

1 - 2 - 3 - 4		1 - 2 - 3 - 4	
Fixture XFR14	Module Xm24	Beam Spread	CCT / Lumens
		COB-optic	25K* / 1400
		15c	27K / 1550
		25c	30K / 1600
		40c	30m* / 1600
		60c	35K* / 1600
			35m* / 1600
			40K* / 1600
			25K* / 2000
			27K / 2000
			30K / 2000
			30m* / 2000
			35K* / 2000
			35m* / 2000
			40K* / 2000
		Multi-optic	30v / 1850
		15	27K / 2300
		25	30K / 2400
		40	35K* / 2400
		60	40K* / 2400
			27K / 3000
			30K / 3000
			35K* / 3000
			40K* / 3000

**Options + Accessories**

- SFR - Spray Foam Rated\*
- 010 - 0-10 V Dimming\*
- HL - Honeycomb Louver
- SL - Linear Spread
- SP - Prismatic Spread
- SS - Solite Spread
- More Accessories Available

**Trim Finish**

- Die-cast, Powder Coated
- WH / WH - White Module, Interior + Flange
- BK / BK - Black Module, Interior + Flange
- BK / WH\* - Black Module + Interior, White Flange
- PW / PW\* - Perfect White Module, Interior + Flange
- BK / PW\* - Black Module + Interior, Perfect White Flange

\*Consult factory for lead time and availability

## XFR22

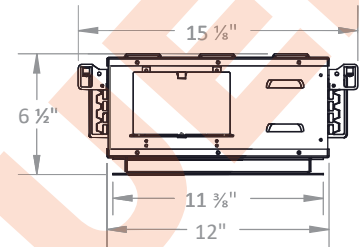
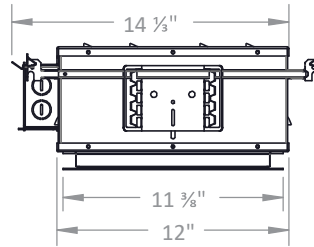
X-SERIES | XM24 | 4-HEAD  
FULLY RECESSED MULTIPLE

PROJECT \_\_\_\_\_

TYPE \_\_\_\_\_

SPECIFICATION \_\_\_\_\_

- Weight without module: 10.8 lb
- Ceiling Cut-Out: 10 ½" x 10 ½"



### Ordering Information

Example: XFR22/Xm24/25-25-25-25/30K/2400/WH/WH/SL-SL-SL-SL

1 - 2 - 3 - 4

1 - 2 - 3 - 4

Fixture	Module	Beam Spread	CCT / Lumens	Options + Accessories
XFR22	Xm24	COB-optic	25K* / 1400	SFR - Spray Foam Rated*
		15c	27K / 1550	O10 - 0-10 V Dimming*
		25c	30K / 1600	HL - Honeycomb Louver
		40c	30m* / 1600	SL - Linear Spread
		60c	35K* / 1600	SP - Prismatic Spread
			35m* / 1600	SS - Solite Spread
			40K* / 1600	More Accessories Available
			25K* / 2000	
			27K / 2000	
			30K / 2000	
			30m* / 2000	
			35K* / 2000	
			35m* / 2000	
			40K* / 2000	
		Multi-optic	30v / 1850	
		15	27K / 2300	
		25	30K / 2400	
		40	35K* / 2400	
		60	40K* / 2400	
			27K / 3000	
			30K / 3000	
			35K* / 3000	
			40K* / 3000	

### Trim Finish

Die-cast, Powder Coated  
 WH / WH - White Module, Interior + Flange  
 BK / BK - Black Module, Interior + Flange  
 BK / WH\* - Black Module + Interior, White Flange  
 PW / PW\* - Perfect White Module, Interior + Flange  
 BK / PW\* - Black Module + Interior, Perfect White Flange

\*Consult factory for lead time and availability

XFR

X-SERIES | XM24  
FULLY RECESSED MULTIPLE

PROJECT \_\_\_\_\_

TYPE \_\_\_\_\_

SPECIFICATION \_\_\_\_\_

PHOTOMETRIC DETAILS | baseline X output multiplier X cri-cct multiplier = final output

COB OPTIC: Baseline data for 22 W, 2000 lumens, 80+ CRI, 3000K

Xm24/15c/30K/2000

Input Power: 22.5 W  
Lumens: 1868 lm  
Efficacy: 82.9 lm/W  
Beam Angle: 19.2°  
Field Angle: 49.1°

Xm24/25c/30K/2000

Input Power: 21.9 W  
Lumens: 2200 lm  
Efficacy: 100.3 lm/W  
Beam Angle: 23.9°  
Field Angle: 59.8°

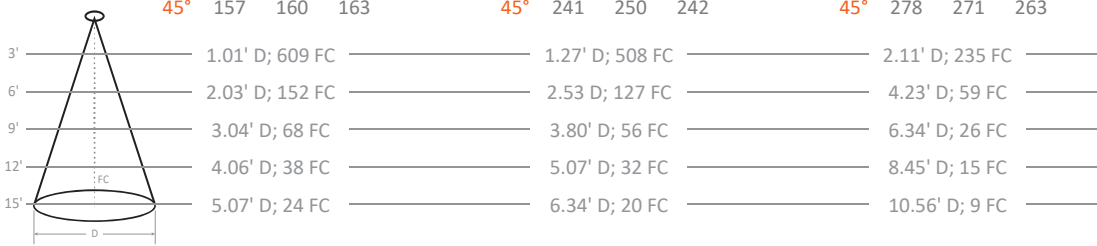
Xm24/40c/30K/2000

Input Power: 22.2 W  
Lumens: 2013 lm  
Efficacy: 90.9 lm/W  
Beam Angle: 38.8°  
Field Angle: 85.9°

∠	0°	45°	90°
0°	7831	7831	7831
5°	6438	6425	6339
10°	3671	3628	3524
15°	1830	1823	1789
20°	1088	1090	1069
25°	726	736	709
30°	501	516	496
35°	342	353	344
40°	233	238	236
45°	157	160	163

∠	0°	45°	90°
0°	6529	6529	6529
5°	5797	5759	5621
10°	4014	3962	3803
15°	2347	2286	2202
20°	1369	1344	1311
25°	904	894	874
30°	646	642	628
35°	458	465	453
40°	332	341	331
45°	241	250	242

∠	0°	45°	90°
0°	3023	3023	3023
5°	2893	2871	2848
10°	2530	2476	2437
15°	2026	1961	1911
20°	1511	1447	1402
25°	1073	1023	987
30°	749	716	690
35°	527	507	491
40°	380	368	357
45°	278	271	263



OUTPUT MULTIPLIER

Package	Optic	Multiplier
18 W 1600 lm Xm24 COB	15°	0.80
	25°	0.80
	40°	0.79

CRI-CCT MULTIPLIER

CRI	CCT	Multiplier
8 (80+)	2200K	0.86
	2500K	0.91
	2700K	0.96
	3000K	1.00
	3500K	1.03
9 (90+)	4000K	1.05
	2200K	0.70
	2500K	0.77
	2700K	0.83
M (MonoWhite)	3000K	0.86
	3500K	0.88
	V (VioLight)	3000K

MULTI-OPTIC: Baseline data for 26 W, 2400 lumens, 80+ CRI, 3000K

Xm24/15/30K/2400

Input Power: 26.4 W  
Lumens: 2636 lm  
Efficacy: 100.0 lm/W  
Beam Angle: 14.8°  
Field Angle: 26.1°

Xm24/25/30K/2400

Input Power: 26.4 W  
Lumens: 2573 lm  
Efficacy: 97.4 lm/W  
Beam Angle: 27.2°  
Field Angle: 48.4°

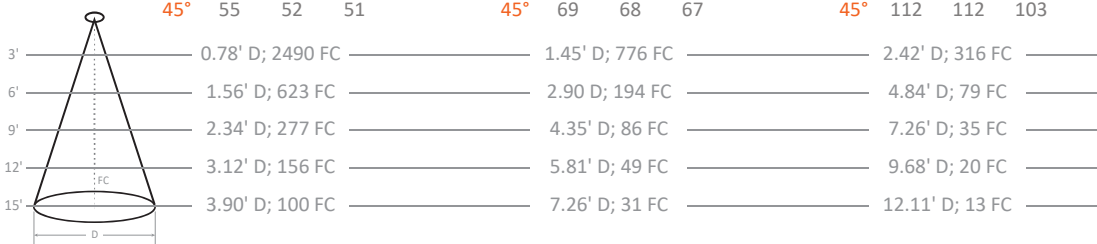
Xm24/40/30K/2400

Input Power: 26.4 W  
Lumens: 2385 lm  
Efficacy: 90.5 lm/W  
Beam Angle: 44.0°  
Field Angle: 71.7°

∠	0°	45°	90°
0°	32012	32012	32012
5°	23079	22740	22414
10°	7807	8170	8147
15°	1905	1732	1527
20°	642	512	463
25°	268	253	255
30°	157	151	150
35°	99	91	89
40°	72	66	62
45°	55	52	51

∠	0°	45°	90°
0°	9977	9977	9977
5°	9134	9161	9195
10°	6880	6928	6963
15°	4125	4130	4112
20°	1967	1951	1931
25°	824	797	783
30°	367	340	323
35°	191	172	164
40°	111	103	99
45°	69	68	67

∠	0°	45°	90°
0°	4057	4057	4057
5°	4083	3943	3829
10°	3913	3706	3506
15°	3452	3328	3021
20°	2599	2596	2302
25°	1651	1710	1532
30°	913	969	889
35°	456	488	459
40°	221	238	225
45°	112	112	103



OUTPUT MULTIPLIER

Package	Optic	Multiplier
20 W 1850 lm Xm24 Multi-optic	15°	0.70
	25°	0.72
	40°	0.78

Package	Optic	Multiplier
28 W 3000 lm Xm24 Multi-optic	15°	1.13
	25°	1.17
	40°	1.12

# XFR

## X-SERIES | XM24 FULLY RECESSED MULTIPLE

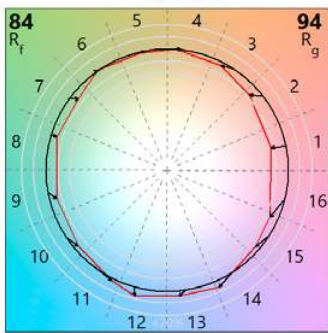
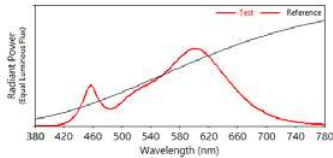
PROJECT \_\_\_\_\_

TYPE \_\_\_\_\_

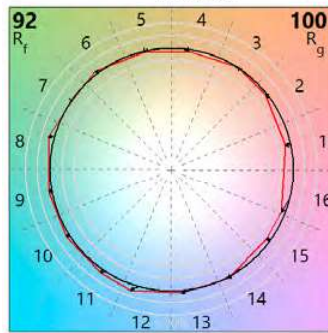
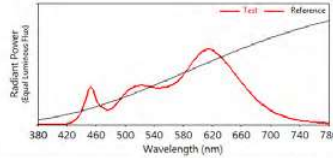
SPECIFICATION \_\_\_\_\_

### TM30 COLOR REPORTS

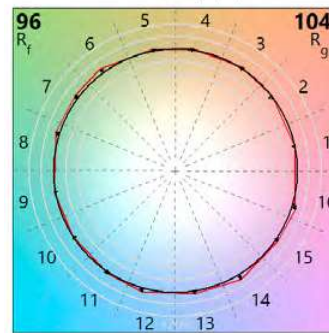
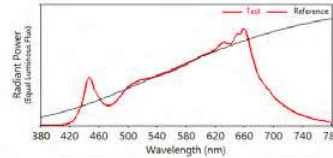
- 3000K with 80+ CRI
- $R_f = 84$ ;  $R_g = 94$
- $R_A = 82$ ;  $R_9 = 11$



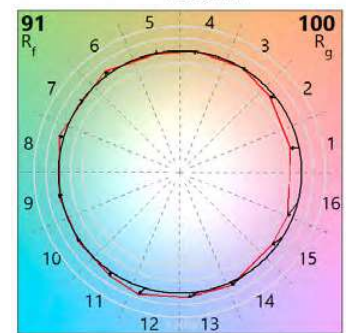
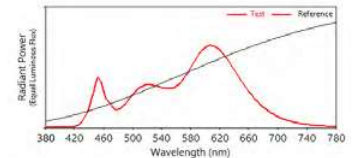
- 3000K with 90+ CRI
- $R_f = 92$ ;  $R_g = 100$
- $R_A = 93$ ;  $R_9 = 56$



- 3000K with 97+ CRI
- $R_f = 96$ ;  $R_g = 104$
- $R_A = 97$ ;  $R_9 = 98$



- 3000K with MonoWhite
- $R_f = 91$ ;  $R_g = 100$
- $R_A = 91$ ;  $R_9 = 42$



**WARNING:** Not for use in fully enclosed luminaires. Risk of electric shock. Use in an indoor, dry location only. This device is not intended for use with emergency exit fixtures or emergency exit lights. May not be compatible with all dimmers; please visit [solais.com/dimming](http://solais.com/dimming) for up-to-date dimmer compatibility information.

**NOTES:** This device complies with Part 15 of the FCC Rule. This product may cause interference with other devices. If interference occurs, change the locations of the products involved. **Compatible on 120v systems.**



Luxiance utilizes active cooling to remove heat from the LED system - allowing Solais LED lamps to operate cooler, resulting in superior life, light output, and performance.



X-CHANGEABLE

X-Changeable is our all-in-one technology that incorporates the optics, LEDs, driver and power within a replaceable module. This allows you to change the lumen output, color temperature, beam angle and trim color with ease.



THEROTTLER

Thermal Throttle – In the event that Solais products begin to overheat, they will undetectably dim unthemselves to protect your technology investments.



VIOLIGHT™

VioLight radiates superior quality, enhancing colors in merchandise, making colors more vibrant and offering a truly competitive LED replacement for CMH-like crispness.