

XFR

X-SERIES | XM24 FULLY RECESSED MULTIPLE

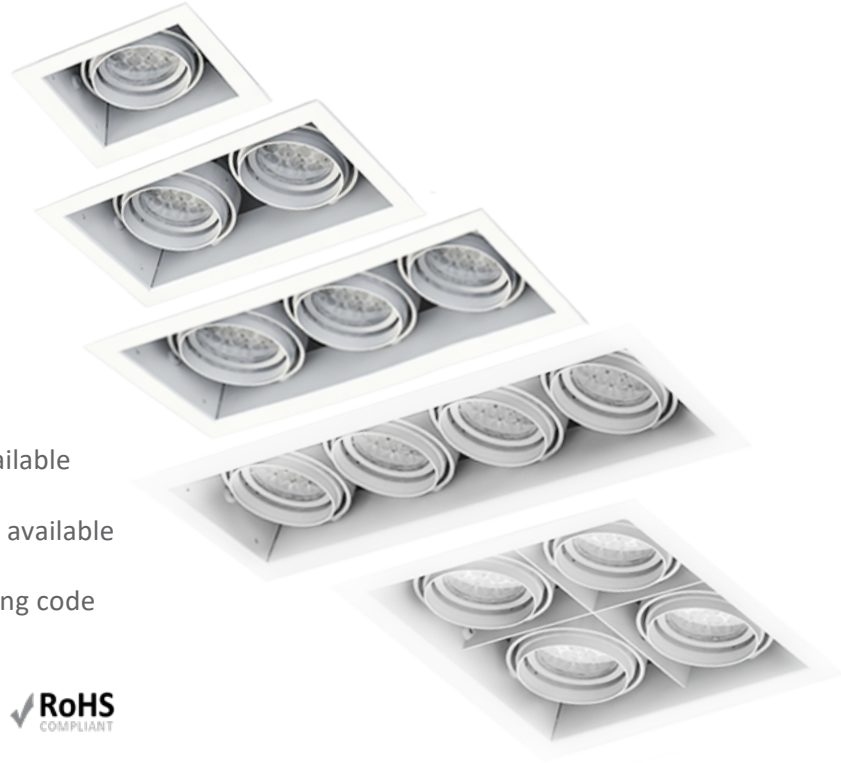
SOLAIS®

PROJECT _____

TYPE _____

SPECIFICATION _____

- 120 V standard
- 0-10 V*, Triac and ELV dimming
- 50,000 hours (L70)
- Integrated driver
- RoHS-compliant
- Contain no lead or mercury
- Certified to UL standards for dry locations
- Emergency backup option available
- Modular individually specifiable optics
- Modules are field-replaceable for easy maintenance and design changes; no tools needed
- Field- adjustable gimbal rings for hot aiming
- Designed for new construction ceilings only.
- Rated for IC and non-IC use; spray foam rated* option available
- VioLight and *MonoWhite color rendering enhancements available
- *90+ High CRI available
To order, replace 'K' in CCT designation with 'h' in ordering code



*Consult factory for lead time and availability

XFR11

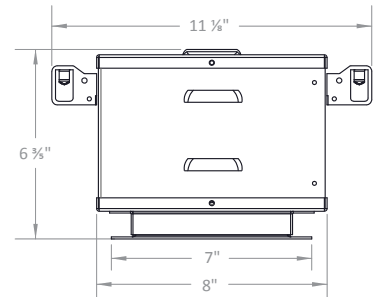
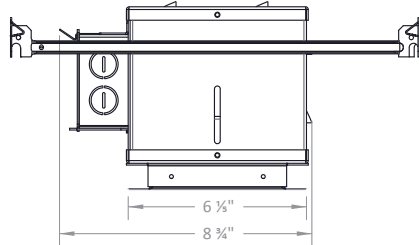
X-SERIES | XM24 | 1-HEAD
FULLY RECESSED MULTIPLE

PROJECT _____

TYPE _____

SPECIFICATION _____

- Weight without module: 4 ⅜ lb
- Ceiling Cut-Out: 6 ⅜" x 5 ¼"



Ordering Information

Example: XFR11/Xm24/25/30K/2400/WH/WH/SL

Fixture	Module	Beam Spread	CCT / Lumens	Options + Accessories
XFR11	Xm24	COB-optic	25K* / 1400	SFR - Spray Foam Rated*
		15c	27K / 1550	010 - 0-10 V Dimming*
		25c	30K / 1600	EM - Emergency Backup Microinverter
		40c	30m* / 1600	HL - Honeycomb Louver
		60c	35K* / 1600	SL - Linear Spread
			35m* / 1600	SP - Prismatic Spread
			40K* / 1600	SS - Solite Spread
			25K* / 2000	More Accessories Available
			27K / 2000	
			30K / 2000	
			30m* / 2000	
			35K* / 2000	
			35m* / 2000	
			40K* / 2000	
		Multi-optic	30v / 1850	
		15	27K / 2300	
		25	30K / 2400	
		40	35K* / 2400	
		60	40K* / 2400	
			27K / 3000	
			30K / 3000	
			35K* / 3000	
			40K* / 3000	

Trim Finish

Die-cast, Powder Coated
 WH / WH - White Module, Interior + Flange
 BK / BK - Black Module, Interior + Flange
 BK / WH* - Black Module + Interior, White Flange
 PW / PW* - Perfect White Module, Interior + Flange
 BK / PW* - Black Module + Interior, Perfect White Flange

*Consult factory for lead time and availability

XFR12

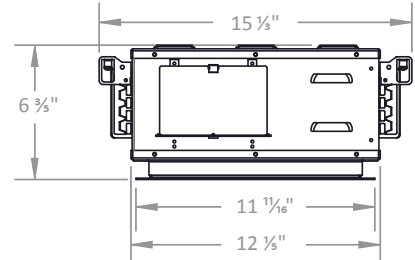
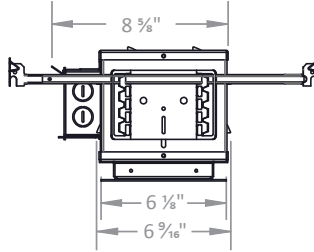
X-SERIES | XM24 | 2-HEAD
FULLY RECESSED MULTIPLE

PROJECT _____

TYPE _____

SPECIFICATION _____

- Weight without module: 7 lb
- Ceiling Cut-Out: 11" x 5 ¼"



Ordering Information

Example: XFR12/Xm24/25-25/30K/2400/WH/WH/SL-SL

1		-		2		1		-		2	
Fixture XFR12	Module Xm24	Beam Spread		CCT / Lumens				Options + Accessories			
		COB-optic		25K* / 1400				SFR - Spray Foam Rated*			
		15c		27K / 1550				010 - 0-10 V Dimming*			
		25c		30K / 1600				EM - Emergency Backup Microinverter			
		40c		30m* / 1600				HL - Honeycomb Louver			
		60c		35K* / 1600				SL - Linear Spread			
				35m* / 1600				SP - Prismatic Spread			
				40K* / 1600				SS - Solite Spread			
				25K* / 2000				More Accessories Available			
				27K / 2000							
				30K / 2000							
				30m* / 2000							
				35K* / 2000							
				35m* / 2000							
				40K* / 2000							
				27K / 3000							
				30K / 3000							
				35K* / 3000							
				40K* / 3000							
		Multi-optic		30v / 1850							
		15		27K / 2300							
		25		30K / 2400							
		40		35K* / 2400							
		60		40K* / 2400							
				27K / 3000							
				30K / 3000							
				35K* / 3000							
				40K* / 3000							

Trim Finish

Die-cast, Powder Coated
 WH / WH - White Module, Interior + Flange
 BK / BK - Black Module, Interior + Flange
 BK / WH* - Black Module + Interior, White Flange
 PW / PW* - Perfect White Module, Interior + Flange
 BK / PW* - Black Module + Interior, Perfect White Flange

*Consult factory for lead time and availability

XFR14

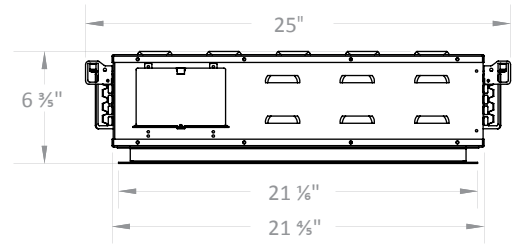
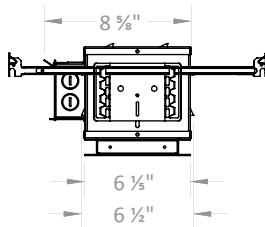
X-SERIES | XM24 | 4-HEAD
FULLY RECESSED MULTIPLE

PROJECT _____

TYPE _____

SPECIFICATION _____

- Weight without module: 10.8 lb
- Ceiling Cut-Out: 20" x 5 1/4"



Ordering Information

Example: XFR14/Xm24/25-25-25-25/30K/2400/WH/WH/SL-SL-SL-SL

1 - 2 - 3 - 4		1 - 2 - 3 - 4		
Fixture	Module	Beam Spread	CCT / Lumens	Options + Accessories
XFR14	Xm24	COB-optic	25K* / 1400	SFR - Spray Foam Rated*
		15c	27K / 1550	010 - 0-10 V Dimming*
		25c	30K / 1600	EM - Emergency Backup Microinverter
		40c	30m* / 1600	HL - Honeycomb Louver
		60c	35K* / 1600	SL - Linear Spread
			40K* / 1600	SP - Prismatic Spread
			25K* / 2000	SS - Solite Spread
			27K / 2000	More Accessories Available
			30K / 2000	
			30m* / 2000	
			35K* / 2000	
			35m* / 2000	
			40K* / 2000	
		Multi-optic	30v / 1850	
		15	27K / 2300	
		25	30K / 2400	
		40	35K* / 2400	
		60	40K* / 2400	
			27K / 3000	
			30K / 3000	
			35K* / 3000	
			40K* / 3000	

Trim Finish

Die-cast, Powder Coated
 WH / WH - White Module, Interior + Flange
 BK / BK - Black Module, Interior + Flange
 BK / WH* - Black Module + Interior, White Flange
 PW / PW* - Perfect White Module, Interior + Flange
 BK / PW* - Black Module + Interior, Perfect White Flange

*Consult factory for lead time and availability

XFR22

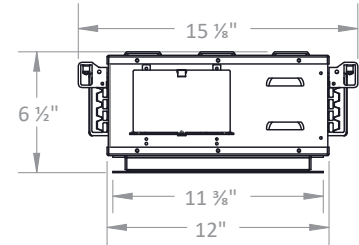
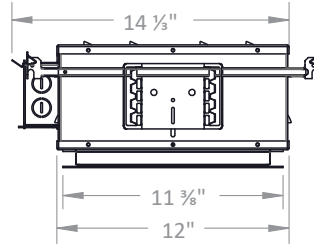
X-SERIES | XM24 | 4-HEAD FULLY RECESSED MULTIPLE

PROJECT _____

TYPE _____

SPECIFICATION _____

- Weight without module: 10.8 lb
- Ceiling Cut-Out: 10 ½" x 10 ½"



Ordering Information

Example: XFR22/Xm24/25-25-25/30K/2400/WH/WH/SL-SL-SL

1 - 2 - 3 - 4

1 - 2 - 3 - 4



Fixture	Module	Beam Spread	CCT / Lumens	Options + Accessories	Trim Finish
XFR22	Xm24	COB-optic	25K* / 1400	SFR - Spray Foam Rated*	Die-cast, Powder Coated
		15c	27K / 1550	O10 - 0-10 V Dimming*	WH / WH - White Module, Interior + Flange
		25c	30K / 1600	EM - Emergency Backup Microinverter	BK / BK - Black Module, Interior + Flange
		40c	30m* / 1600	HL - Honeycomb Louver	BK / WH* - Black Module + Interior, White Flange
		60c	35K* / 1600	SL - Linear Spread	PW / PW* - Perfect White Module, Interior + Flange
			35m* / 1600	SP - Prismatic Spread	BK / PW* - Black Module + Interior, Perfect White Flange
			40K* / 1600	SS - Solite Spread	
			25K* / 2000	More Accessories Available	
			27K / 2000		
			30K / 2000		
			30m* / 2000		
			35K* / 2000		
			35m* / 2000		
			40K* / 2000		
		Multi-optic	30v / 1850		
		15	27K / 2300		
		25	30K / 2400		
		40	35K* / 2400		
		60	40K* / 2400		
			27K / 3000		
			30K / 3000		
			35K* / 3000		
			40K* / 3000		

*Consult factory for lead time and availability

XFR

X-SERIES | XM24
FULLY RECESSED MULTIPLE

PROJECT _____

TYPE _____

SPECIFICATION _____

PHOTOMETRIC DETAILS | baseline X output multiplier X cri-cct multiplier = final output

COB OPTIC: Baseline data for 22 W, 2000 lumens, 80+ CRI, 3000K

Xm24/15c/30K/2000

Input Power: 22.5 W
Lumens: 1868 lm
Efficacy: 82.9 lm/W
Beam Angle: 19.2°
Field Angle: 49.1°

Xm24/25c/30K/2000

Input Power: 21.9 W
Lumens: 2200 lm
Efficacy: 100.3 lm/W
Beam Angle: 23.9°
Field Angle: 59.8°

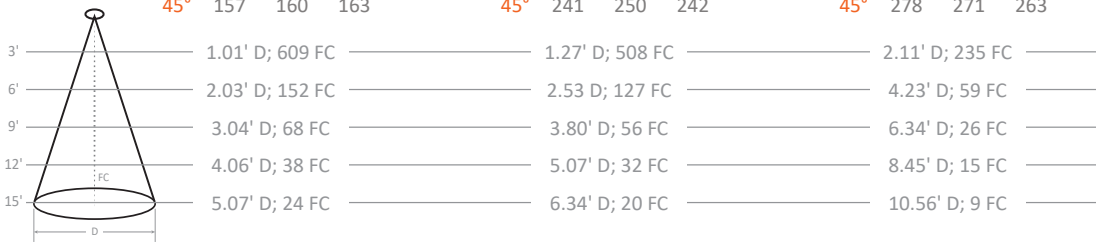
Xm24/40c/30K/2000

Input Power: 22.2 W
Lumens: 2013 lm
Efficacy: 90.9 lm/W
Beam Angle: 38.8°
Field Angle: 85.9°

∠	0°	45°	90°
0°	7831	7831	7831
5°	6438	6425	6339
10°	3671	3628	3524
15°	1830	1823	1789
20°	1088	1090	1069
25°	726	736	709
30°	501	516	496
35°	342	353	344
40°	233	238	236
45°	157	160	163

∠	0°	45°	90°
0°	6529	6529	6529
5°	5797	5759	5621
10°	4014	3962	3803
15°	2347	2286	2202
20°	1369	1344	1311
25°	904	894	874
30°	646	642	628
35°	458	465	453
40°	332	341	331
45°	241	250	242

∠	0°	45°	90°
0°	3023	3023	3023
5°	2893	2871	2848
10°	2530	2476	2437
15°	2026	1961	1911
20°	1511	1447	1402
25°	1073	1023	987
30°	749	716	690
35°	527	507	491
40°	380	368	357
45°	278	271	263



MULTI-OPTIC: Baseline data for 26 W, 2400 lumens, 80+ CRI, 3000K

Xm24/15/30K/2400

Input Power: 26.4 W
Lumens: 2636 lm
Efficacy: 100.0 lm/W
Beam Angle: 14.8°
Field Angle: 26.1°

Xm24/25/30K/2400

Input Power: 26.4 W
Lumens: 2573 lm
Efficacy: 97.4 lm/W
Beam Angle: 27.2°
Field Angle: 48.4°

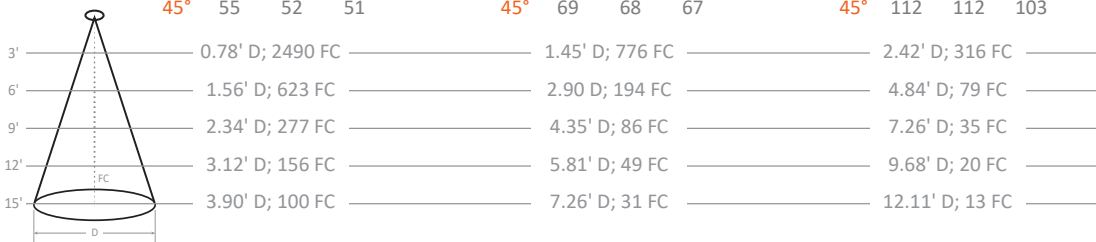
Xm24/40/30K/2400

Input Power: 26.4 W
Lumens: 2385 lm
Efficacy: 90.5 lm/W
Beam Angle: 44.0°
Field Angle: 71.7°

∠	0°	45°	90°
0°	32012	32012	32012
5°	23079	22740	22414
10°	7807	8170	8147
15°	1905	1732	1527
20°	642	512	463
25°	268	253	255
30°	157	151	150
35°	99	91	89
40°	72	66	62
45°	55	52	51

∠	0°	45°	90°
0°	9977	9977	9977
5°	9134	9161	9195
10°	6880	6928	6963
15°	4125	4130	4112
20°	1967	1951	1931
25°	824	797	783
30°	367	340	323
35°	191	172	164
40°	111	103	99
45°	69	68	67

∠	0°	45°	90°
0°	4057	4057	4057
5°	4083	3943	3829
10°	3913	3706	3506
15°	3452	3328	3021
20°	2599	2596	2302
25°	1651	1710	1532
30°	913	969	889
35°	456	488	459
40°	221	238	225
45°	112	112	103



OUTPUT MULTIPLIER

Package	Optic	Multiplier
18 W 1600 lm Xm24 COB	15°	0.80
	25°	0.80
	40°	0.79

CRI-CCT MULTIPLIER

CRI	CCT	Multiplier
8 (80+)	2200K	0.86
	2500K	0.91
	2700K	0.96
	3000K	1.00
	3500K	1.03
9 (90+)	4000K	1.05
	2200K	0.70
	2500K	0.77
	2700K	0.83
M (MonoWhite)	3000K	0.86
	3500K	0.88
	V (VioLight)	3000K

OUTPUT MULTIPLIER

Package	Optic	Multiplier
20 W 1850 lm Xm24 Multi-optic	15°	0.70
	25°	0.72
	40°	0.78

Package	Optic	Multiplier
28 W 3000 lm Xm24 Multi-optic	15°	1.13
	25°	1.17
	40°	1.12

XFR

X-SERIES | XM24 FULLY RECESSED MULTIPLE

PROJECT _____

TYPE _____

SPECIFICATION _____

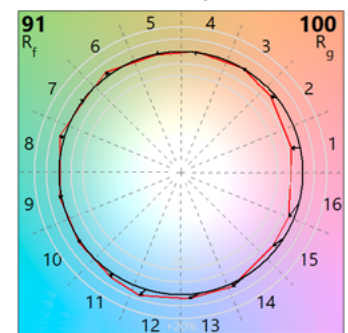
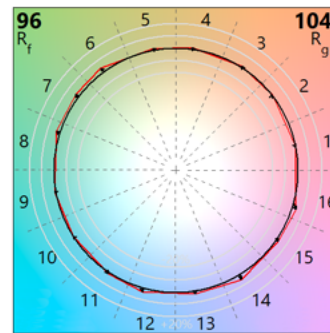
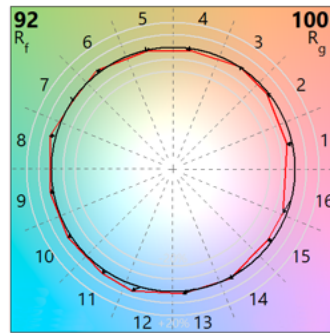
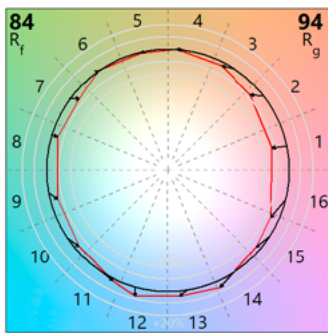
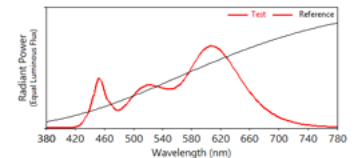
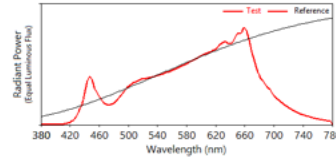
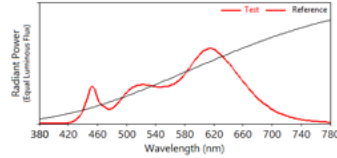
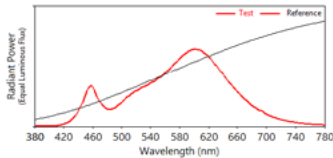
TM30 COLOR REPORTS

- 3000K with 80+ CRI
- $R_f = 84$; $R_g = 94$
- $R_A = 82$; $R_g = 11$

- 3000K with 90+ CRI
- $R_f = 92$; $R_g = 100$
- $R_A = 93$; $R_g = 56$

- 3000K with 97+ CRI
- $R_f = 96$; $R_g = 104$
- $R_A = 97$; $R_g = 98$

- 3000K with MonoWhite
- $R_f = 91$; $R_g = 100$
- $R_A = 91$; $R_g = 42$



WARNING: Not for use in fully enclosed luminaires. Risk of electric shock. Use in an indoor, dry location only. This device is not intended for use with emergency exit fixtures or emergency exit lights. May not be compatible with all dimmers; please visit solais.com/dimming for up-to-date dimmer compatibility information.

NOTES: This device complies with Part 15 of the FCC Rule. This product may cause interference with other devices. If interference occurs, change the locations of the products involved. **Compatible on 120v systems.**



Luxiance utilizes active cooling to remove heat from the LED system - allowing Solais LED lamps to operate cooler, resulting in superior life, light output, and performance.



X-CHANGEABLE

X-Changeable is our all-in-one technology that incorporates the optics, LEDs, driver and power within a replaceable module. This allows you to change the lumen output, color temperature, beam angle and trim color with ease.



THEROTTLER

Thermal Throttle – In the event that Solais products begin to overheat, they will undetectably dim unthemselves to protect your technology investments.



VIOLIGHT™

VioLight radiates superior quality, enhancing colors in merchandise, making colors more vibrant and offering a truly competitive LED replacement for CMH-like crispness.